



Quaternary Deposits


HUDSON EPISODE


 Cahokia Fm; river sand, gravel, and silt

WISCONSIN EPISODE

Mason Group

 Thickness of Peoria and Roxanna Silts; silt deposited as loess (5-ft contour interval)

 Equality Fm; silt and clay deposited in lakes


 Henry Fm; sand and gravel deposited in glacial rivers, outwash fans, beaches, and dunes


Wedron Group (Tiskilwa, Lemont, and Wadsworth Fms) and Trafalgar Fm; diamicton deposited as till and ice-marginal sediment

 End moraine

 Till plain

ILLINOIS EPISODE

 Teneriffe Silt; silt and clay deposited in lakes

 Pearl Fm; sand and gravel deposited in glacial rivers and outwash fans, and Hagarstown Mbr; ice-contact sand and gravel deposited in ridges

Winnebago Fm; diamicton deposited as till and ice-marginal sediment


 Till plain

Glasford Fm; diamicton deposited as till and ice-marginal sediment

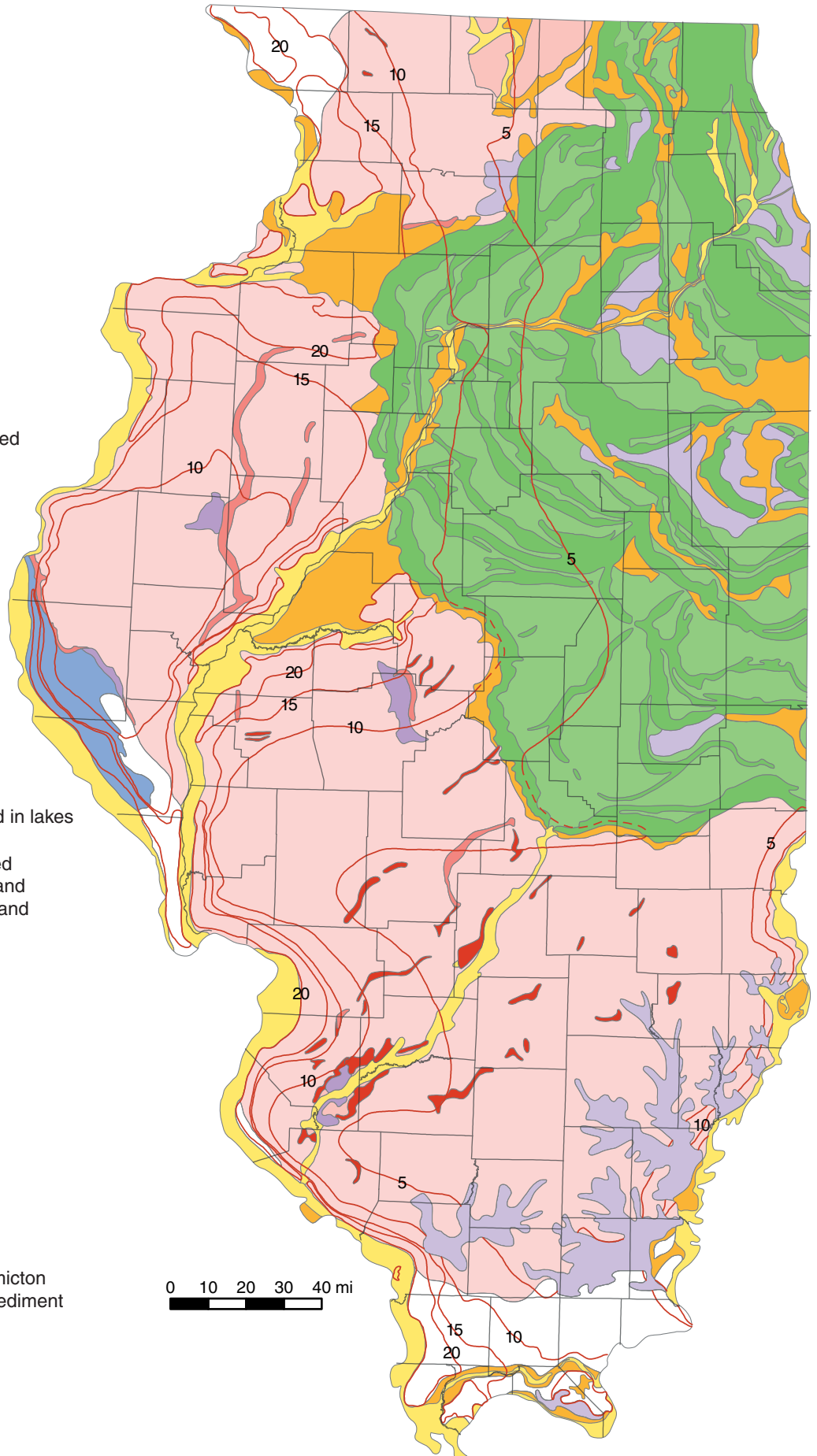
 End moraine

 Till plain

PRE-ILLINOIS EPISODE

 Wolf Creek Fm; predominantly diamicton deposited as till and ice-marginal sediment

 Unglaciaded



Suggested citation:

ISGS Staff, 2005, Quaternary deposits: Illinois State Geological Survey, ISGS 8.5 x 11 map series.