

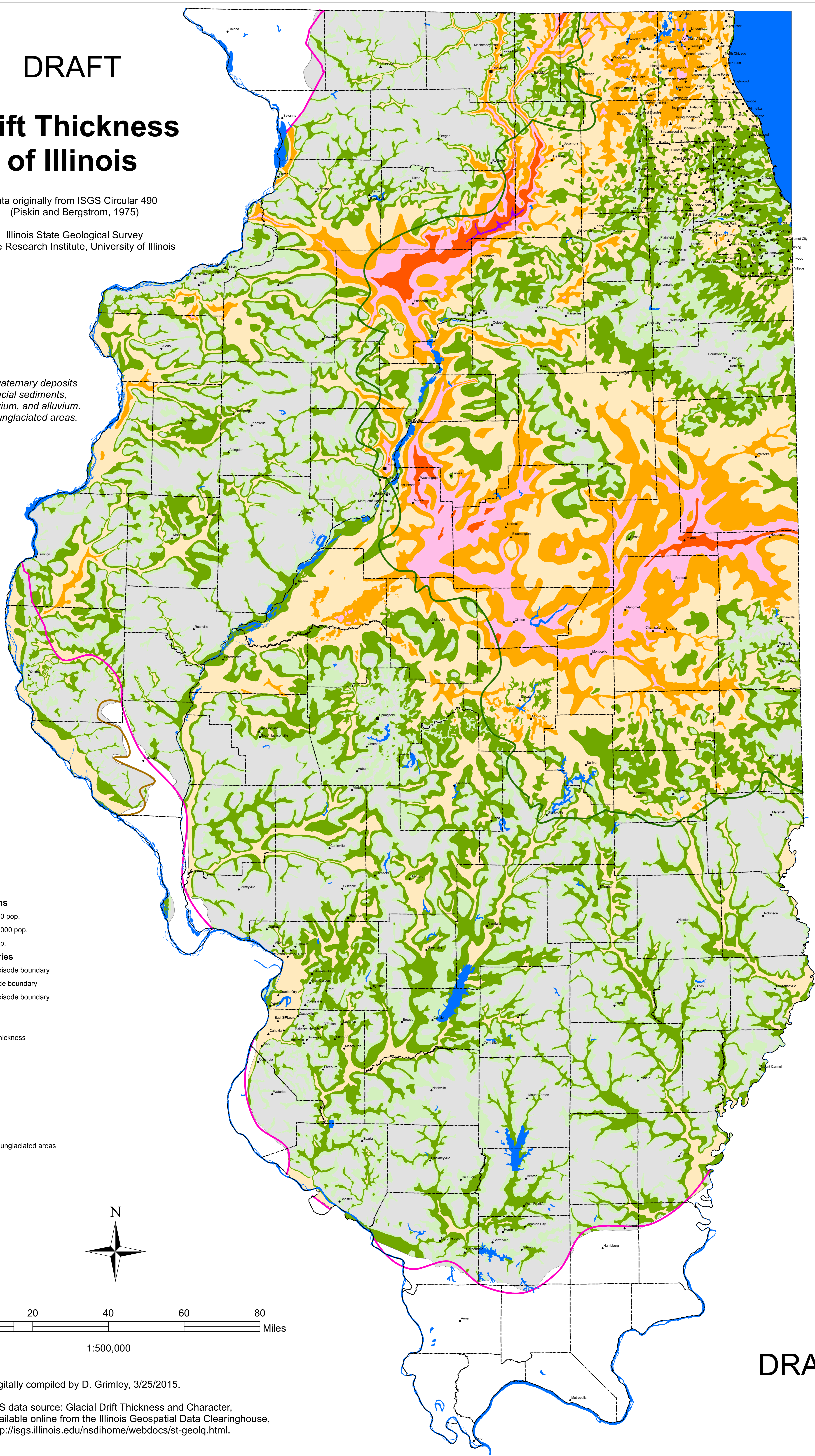
DRAFT

Drift Thickness of Illinois

Data originally from ISGS Circular 490
(Piskin and Bergstrom, 1975)

Illinois State Geological Survey
Prairie Research Institute, University of Illinois

Drift includes all Quaternary deposits such as loess, glacial sediments, lake sediment, colluvium, and alluvium. Data not shown in unglaciated areas.



Legend

Cities and towns

- 3,000 - 15,000 pop.
- ▲ 15,000 - 100,000 pop.
- > 100,000 pop.

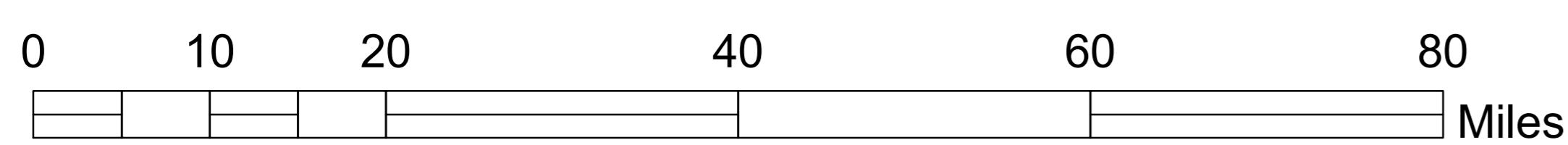
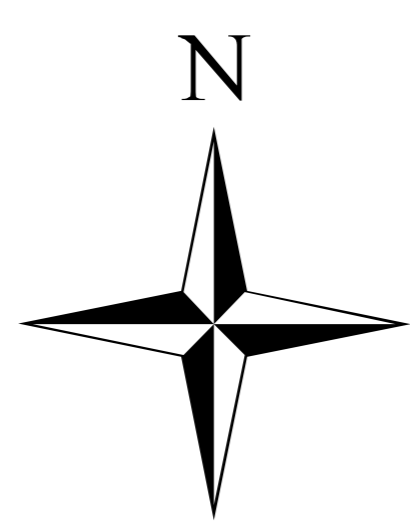
Glacial boundaries

- Wisconsin Episode boundary
- Illinois Episode boundary
- pre-Illinois Episode boundary

Drift thickness

RANGE

- < 25 ft. drift thickness
- 25 - 50 ft.
- 50 - 100 ft.
- 100 - 200 ft.
- 200 - 300 ft.
- 300 - 400 ft.
- 400 - 500 ft.
- > 500 ft.
- not shown in unglaciated areas



1:500,000

Digitally compiled by D. Grimley, 3/25/2015.

GIS data source: Glacial Drift Thickness and Character,
available online from the Illinois Geospatial Data Clearinghouse,
<http://isgs.illinois.edu/nsdihome/webdocs/st-geolq.html>.

DRAFT