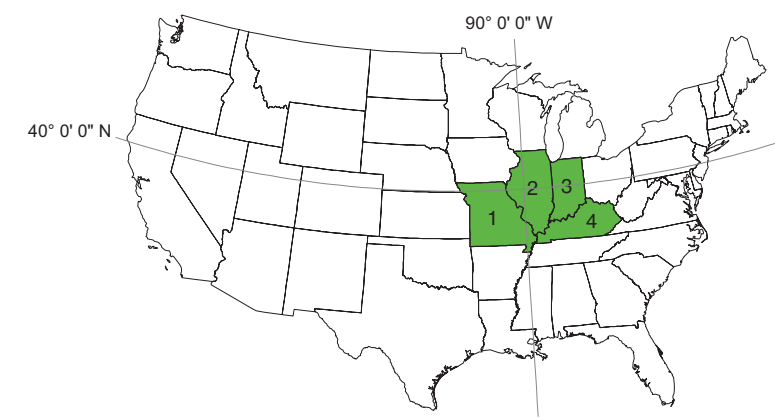


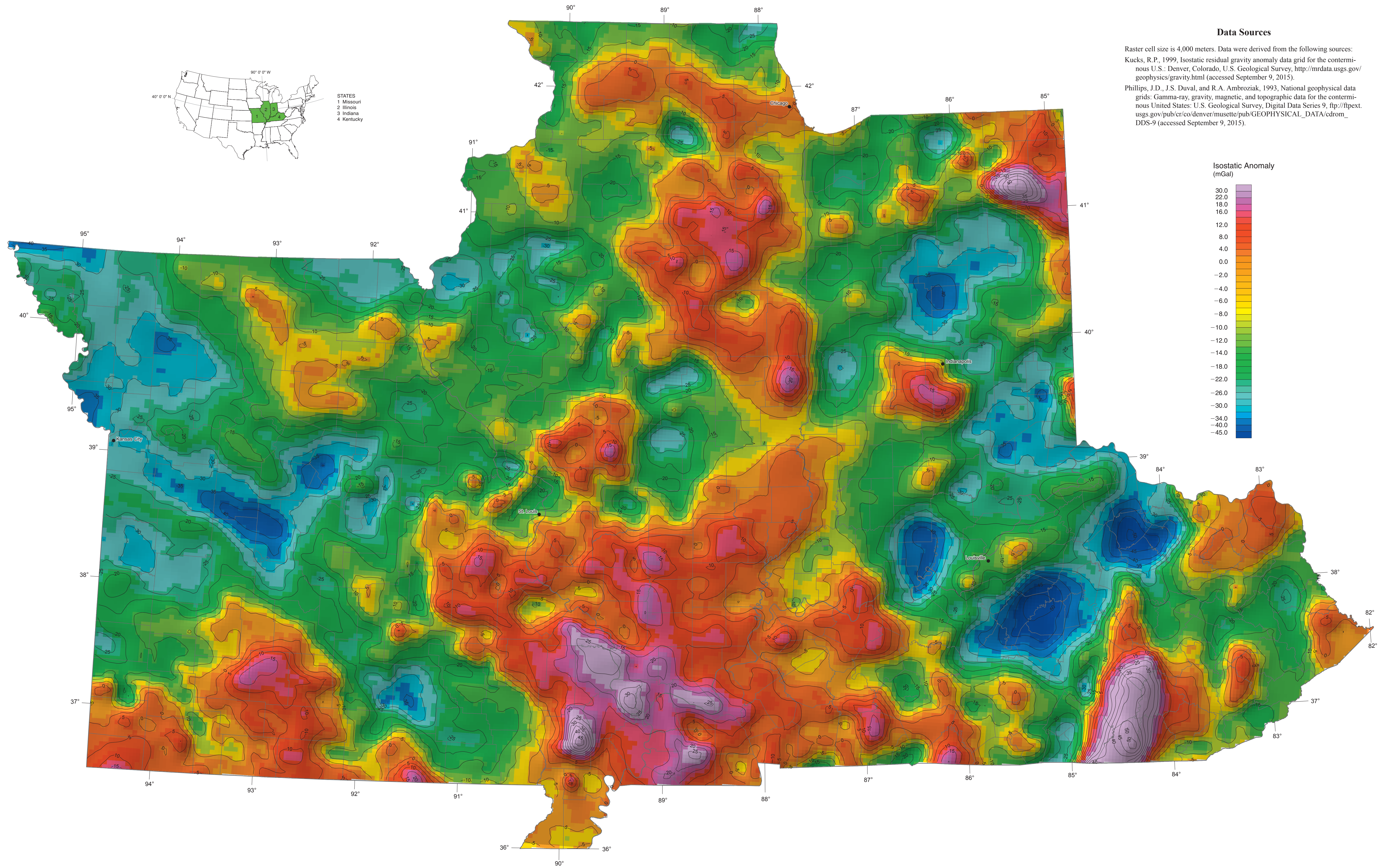
# GEOLOGICAL AND GEOPHYSICAL MAPS OF THE ILLINOIS BASIN-OZARK DOME REGION

## MAP 9: ISOSTATIC GRAVITY ANOMALY

Digitally compiled by Curtis C. Abert, Stephen Marshak, and Timothy H. Larson  
2016



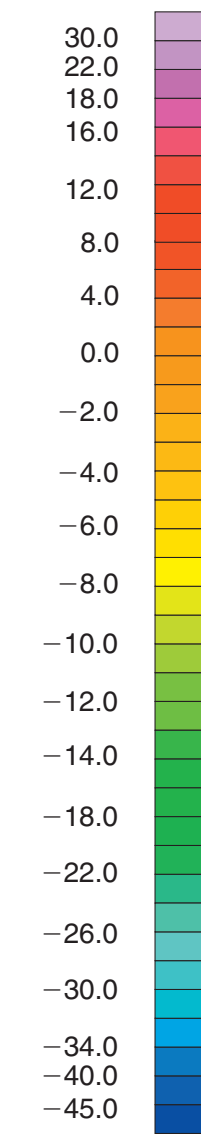
STATES  
1 Missouri  
2 Illinois  
3 Indiana  
4 Kentucky



### Data Sources

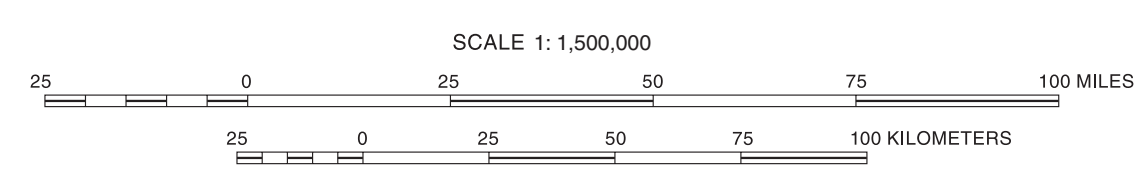
Raster cell size is 4,000 meters. Data were derived from the following sources:  
Kucks, R.P., 1999. Isostatic residual gravity anomaly data grid for the conterminous U.S.: Denver, Colorado, U.S. Geological Survey, <http://mrdata.usgs.gov/geophysics/gravity.html> (accessed September 9, 2015).  
Phillips, J.D., J.S. Duval, and R.A. Ambroziak, 1993. National geophysical data grids: Gamma-ray, gravity, magnetic, and topographic data for the conterminous United States: U.S. Geological Survey, Digital Data Series 9, [ftp://ftpext.usgs.gov/pub/er/co/denver/musette/pub/GEOPHYSICAL\\_DATA/cdrom\\_DDS-9](http://ftpext.usgs.gov/pub/er/co/denver/musette/pub/GEOPHYSICAL_DATA/cdrom_DDS-9) (accessed September 9, 2015).

### Isostatic Anomaly (mGal)



Vector base data from 2009 Esri Data and Maps  
Geographic coordinate system: GCS\_WGS\_1984  
Projection: Lambert Conformal Conic

**Recommended citation:**  
Abert, C.C., S. Marshak, and T.H. Larson, 2016, Map 9: Isostatic gravity anomaly, in S. Marshak, T.H. Larson, and C.C. Abert, compilers, Geological and geophysical maps of the Illinois Basin-Ozark Dome Region: Illinois State Geological Survey, Illinois Map 23-9, 1:1,500,000.



© 2016 University of Illinois Board of Trustees. All rights reserved.  
For permission information, contact the Illinois State Geological Survey.

Digital cartography by Jennifer E. Carrell, Illinois State Geological Survey.

The Illinois State Geological Survey, the University of Illinois, and the State of Illinois make no guarantee, expressed or implied, regarding the correctness of the interpretations presented in this document and accept no liability for the consequences of decisions made by others on the basis of the information presented here. The geologic interpretations are based on data that may vary with respect to the accuracy of geographic location, the type and quantity of data available at each location, and the scientific and technical qualifications of the data sources.