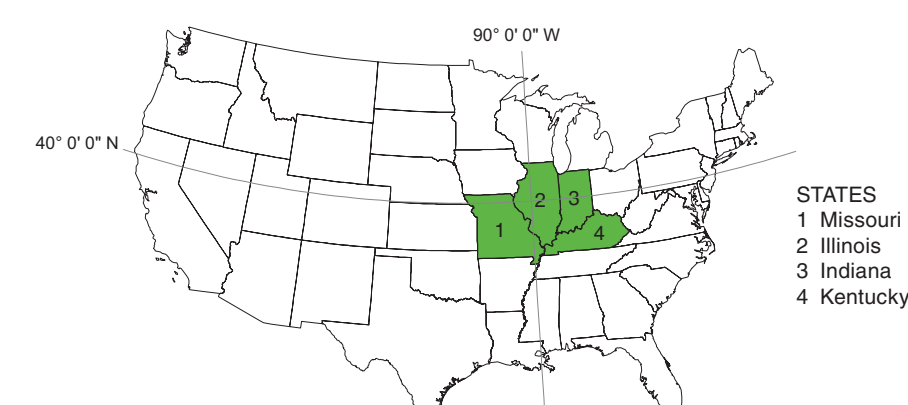
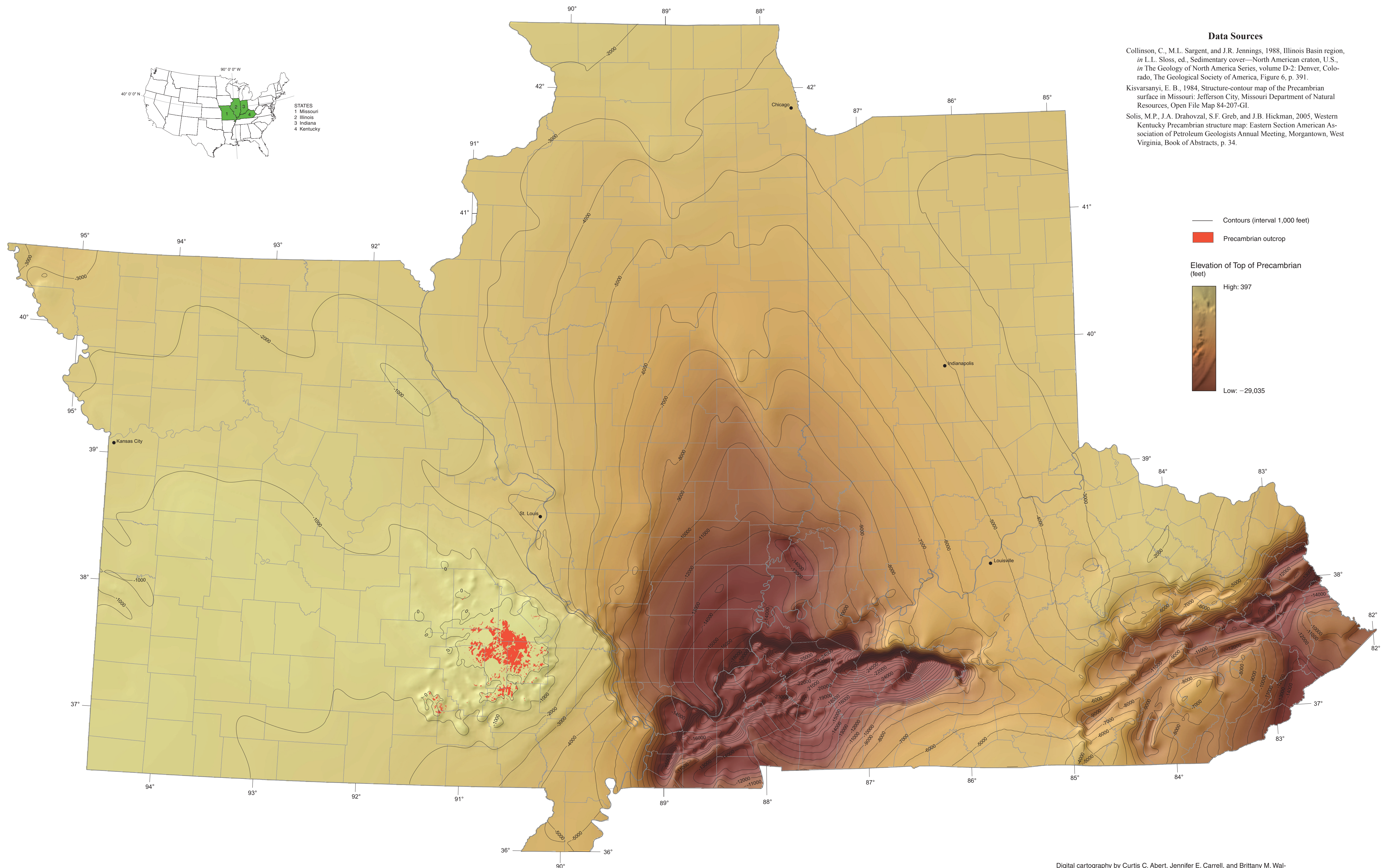


GEOLOGICAL AND GEOPHYSICAL MAPS OF THE ILLINOIS BASIN-OZARK DOME REGION

MAP 8: STRUCTURE CONTOURS OF THE TOP OF THE PRECAMBRIAN

Compiled by Curtis C. Abert, Stephen Marshak, and Timothy H. Larson
2016



STATES
1 Missouri
2 Illinois
3 Indiana
4 Kentucky

Data Sources

Collinson, C., M.L. Sargent, and J.R. Jennings, 1988, Illinois Basin region, in L.L. Sloss, ed., *Sedimentary cover—North American craton, U.S.*, in *The Geology of North America Series, volume D-2*: Denver, Colorado, The Geological Society of America, Figure 6, p. 391.

Kisvarsanyi, E. B., 1984, Structure-contour map of the Precambrian surface in Missouri: Jefferson City, Missouri Department of Natural Resources, Open File Map 84-207-G1.

Solis, M.P., J.A. Drahovzal, S.F. Greb, and J.B. Hickman, 2005, Western Kentucky Precambrian structure map: Eastern Section American Association of Petroleum Geologists Annual Meeting, Morgantown, West Virginia, Book of Abstracts, p. 34.

— Contours (interval 1,000 feet)

■ Precambrian outcrop

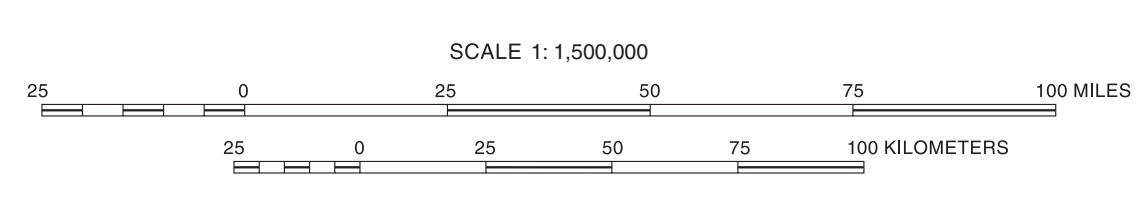
Elevation of Top of Precambrian (feet)

High: 397

Low: -29,035

Vector base data from 2009 Esri Data and Maps
Geographic coordinate system: GCS_WGS_1984
Projection: Lambert Conformal Conic

Recommended citation:
Abert, C.C., S. Marshak, and T.H. Larson, 2016, Map 8: Structure contours of the top of the Precambrian, in S. Marshak, T.H. Larson, and C.C. Abert, compilers, *Geological and geophysical maps of the Illinois Basin-Ozark Dome Region*: Illinois State Geological Survey, Illinois Map 23-8, 1:1,500,000.



© 2016 University of Illinois Board of Trustees. All rights reserved.
For permission information, contact the Illinois State Geological Survey.

Digital cartography by Curtis C. Abert, Jennifer E. Carrell, and Brittany M. Walbright, Illinois State Geological Survey.

This map is a compilation of multiple preexisting data sets. The data sources may not have been reviewed by the ISGS for accuracy. Discrepancies may exist across state boundaries. Data resolution may vary across the map. Structure contours and surfaces represent the source data as modeled in ArcGIS. Resolution may be low and uncertainty high for surfaces modeled at great depth.

The Illinois State Geological Survey, the University of Illinois, and the State of Illinois make no guarantee, expressed or implied, regarding the correctness of the interpretations presented in this document and accept no liability for the consequences of decisions made by others on the basis of the information presented here. The geologic interpretations are based on data that may vary with respect to the accuracy of geographic location, the type and quantity of data available at each location, and the scientific and technical qualifications of the data sources.