

GEOLOGICAL AND GEOPHYSICAL MAPS OF THE ILLINOIS BASIN-OZARK DOME REGION

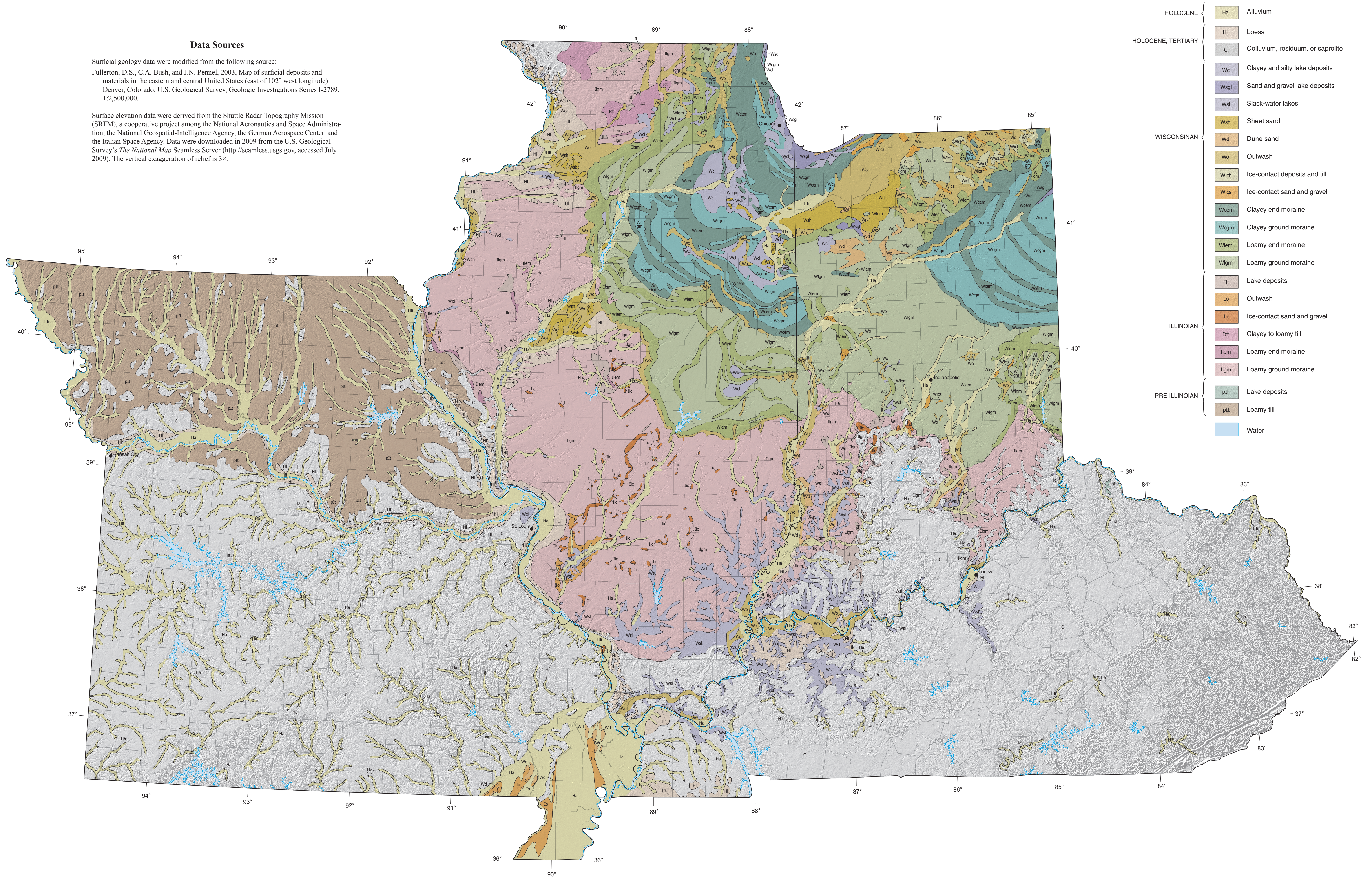
MAP 3: SURFICIAL GEOLOGY WITH SHADED RELIEF

Digitally compiled by Curtis C. Abert, Stephen Marshak, and Timothy H. Larson
2016

Data Sources

Surficial geology data were modified from the following source:
Fullerton, D.S., C.A. Bush, and J.N. Pennel, 2003, Map of surficial deposits and materials in the eastern and central United States (east of 102° west longitude); Denver, Colorado, U.S. Geological Survey, Geologic Investigations Series I-2789, 1:2,500,000.

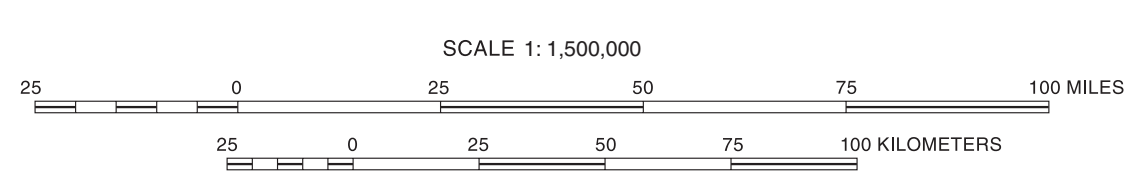
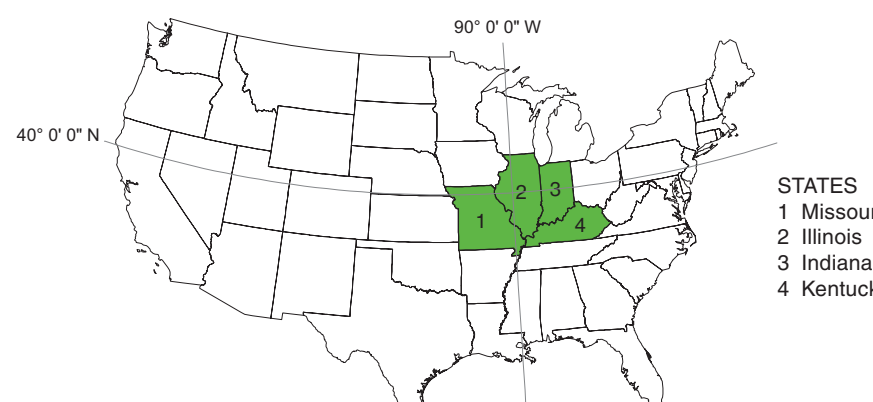
Surface elevation data were derived from the Shuttle Radar Topography Mission (SRTM), a cooperative project among the National Aeronautics and Space Administration, the National Geospatial-Intelligence Agency, the German Aerospace Center, and the Italian Space Agency. Data were downloaded in 2009 from the U.S. Geological Survey's *The National Map Seamless Server* (<http://seamless.usgs.gov>, accessed July 2009). The vertical exaggeration of relief is 3x.



- | | | |
|--------------------|------|-----------------------------------|
| Holocene | Ha | Alluvium |
| Holocene, Tertiary | Hi | Loess |
| | C | Colluvium, residuum, or saprolite |
| | Wcl | Clayey and silty lake deposits |
| | Wspl | Sand and gravel lake deposits |
| Wisconsinan | Wsl | Slack-water lakes |
| | Wsh | Sheet sand |
| | Wd | Dune sand |
| | Wo | Outwash |
| | Wict | Ice-contact deposits and till |
| | Wics | Ice-contact sand and gravel |
| | Wcem | Clayey end moraine |
| | Wcgm | Clayey ground moraine |
| | Wlem | Loamy end moraine |
| | Wlgm | Loamy ground moraine |
| Illinoian | II | Lake deposits |
| | Io | Outwash |
| | Iic | Ice-contact sand and gravel |
| | Ict | Clayey to loamy till |
| Pre-Illinoian | Ilem | Loamy end moraine |
| | Ilgm | Loamy ground moraine |
| | pli | Lake deposits |
| | plt | Loamy till |
| | | Water |

Vector base data from 2009 Esri Data and Maps
Geographic coordinate system: GCS_WGS_1984
Projection: Lambert Conformal Conic

Recommended citation:
Abert, C.C., S. Marshak, and T.H. Larson, 2016, Map 3: Surficial geology with shaded relief, in S. Marshak, T.H. Larson, and C.C. Abert, compilers, Geological and geophysical maps of the Illinois Basin-Ozark Dome Region: Illinois State Geological Survey, Illinois Map 23-3, 1:1,500,000.



© 2016 University of Illinois Board of Trustees. All rights reserved.
For permission information, contact the Illinois State Geological Survey.

Digital cartography by Curtis C. Abert and Jennifer E. Carrell, Illinois State Geological Survey.

The Illinois State Geological Survey, the University of Illinois, and the State of Illinois make no guarantee, expressed or implied, regarding the correctness of the interpretations presented in this document and accept no liability for the consequences of decisions made by others on the basis of the information presented here. The geologic interpretations are based on data that may vary with respect to the accuracy of geographic location, the type and quantity of data available at each location, and the scientific and technical qualifications of the data sources.