

# GEOLOGICAL AND GEOPHYSICAL MAPS OF THE ILLINOIS BASIN-OZARK DOME REGION

## MAP 2: BEDROCK TOPOGRAPHY

Digitally compiled by Curtis C. Abert, Stephen Marshak, and Timothy H. Larson  
2016

### Data Sources

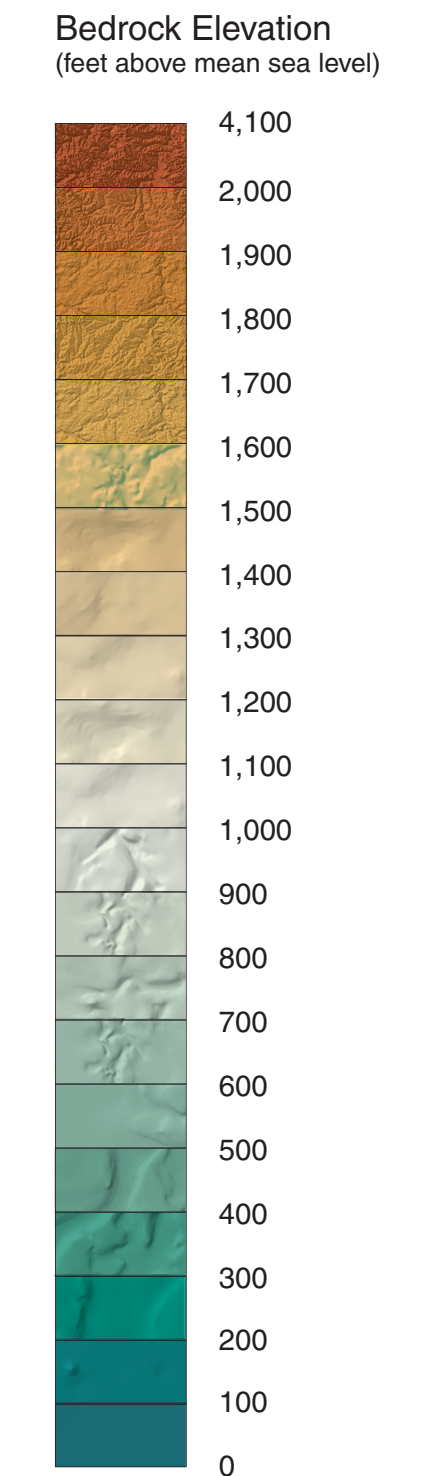
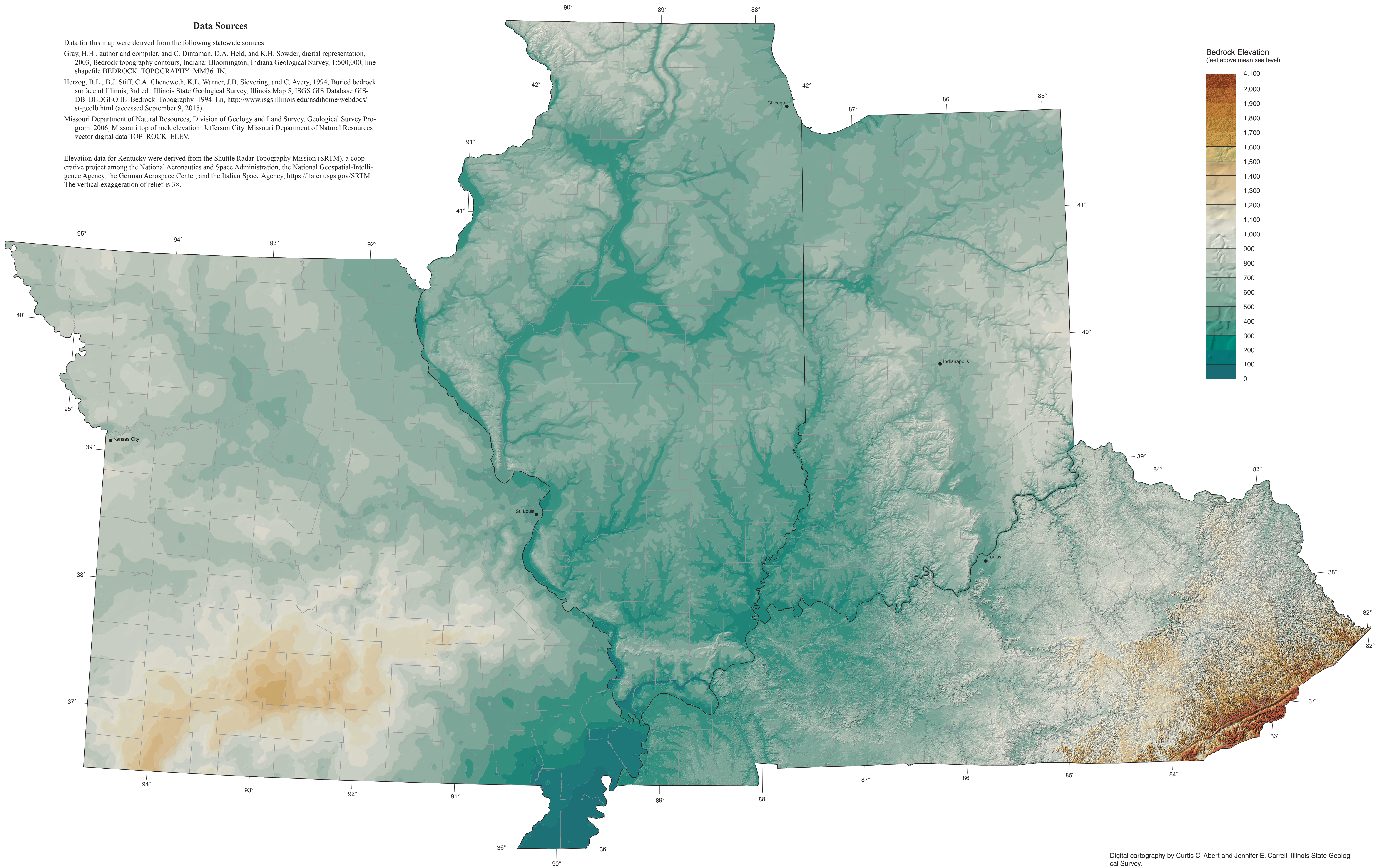
Data for this map were derived from the following statewide sources:

Gray, H.H., author and compiler, and C. Dintaman, D.A. Held, and K.H. Sowder, digital representation, 2003, Bedrock topography contours, Indiana: Bloomington, Indiana Geological Survey, 1:500,000, line shapefile BEDROCK\_TOPOGRAPHY\_MM36\_IN.

Herzog, B.L., B.J. Stiff, C.A. Chenoweth, K.L. Warner, J.B. Sievering, and C. Avery, 1994, Buried bedrock surface of Illinois, 3rd ed.: Illinois State Geological Survey, Illinois Map 5, ISGS GIS Database GIS-DB\_BEDGEO\_IL\_Bedrock\_Topography\_1994\_Ln, <http://www.isgs.illinois.edu/nsd/home/webdocs/st-geolb.html> (accessed September 9, 2015).

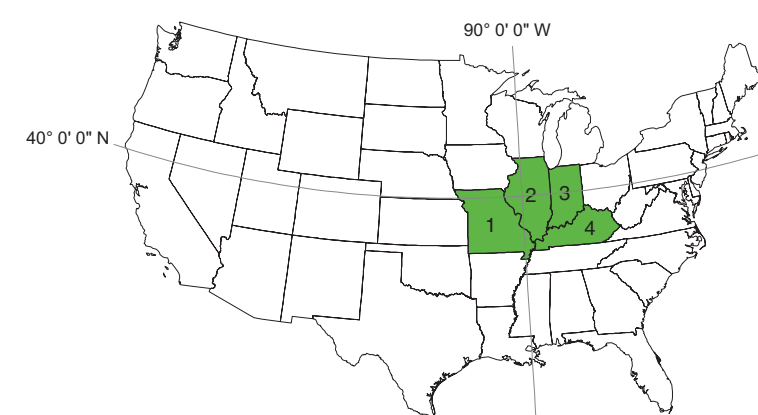
Missouri Department of Natural Resources, Division of Geology and Land Survey, Geological Survey Program, 2006, Missouri top of rock elevation: Jefferson City, Missouri Department of Natural Resources, vector digital data TOP\_ROCK\_ELEV.

Elevation data for Kentucky were derived from the Shuttle Radar Topography Mission (SRTM), a cooperative project among the National Aeronautics and Space Administration, the National Geospatial-Intelligence Agency, the German Aerospace Center, and the Italian Space Agency, <https://ita.cr.usgs.gov/SRTM>. The vertical exaggeration of relief is 3x.

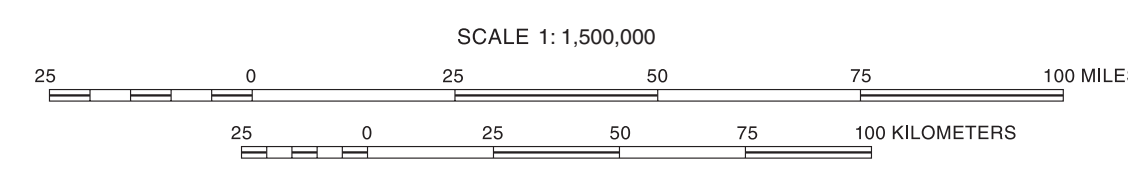


Vector base data from 2009 Esri Data and Maps  
Geographic coordinate system: GCS\_WGS\_1984  
Projection: Lambert Conformal Conic

**Recommended citation:**  
Abert, C.C., S. Marshak, and T.H. Larson, 2016, Map 2: Bedrock topography, in S. Marshak, T.H. Larson, and C.C. Abert, compilers, Geological and geophysical maps of the Illinois Basin-Ozark Dome Region: Illinois State Geological Survey, Illinois Map 23-2, 1:1,500,000.



STATES  
1 Missouri  
2 Illinois  
3 Indiana  
4 Kentucky



© 2016 University of Illinois Board of Trustees. All rights reserved.  
For permission information, contact the Illinois State Geological Survey.

Digital cartography by Curtis C. Abert and Jennifer E. Carrell, Illinois State Geological Survey.

This map is a compilation of multiple preexisting data sets. The data sources may not have been reviewed by the ISGS for accuracy. Discrepancies may exist across state boundaries. Data resolution may vary across the map. Surfaces represent the source data as modeled in ArcGIS.

The Illinois State Geological Survey, the University of Illinois, and the State of Illinois make no guarantee, expressed or implied, regarding the correctness of the interpretations presented in this document and accept no liability for the consequences of decisions made by others on the basis of the information presented here. The geologic interpretations are based on data that may vary with respect to the accuracy of geographic location, the type and quantity of data available at each location, and the scientific and technical qualifications of the data sources.