

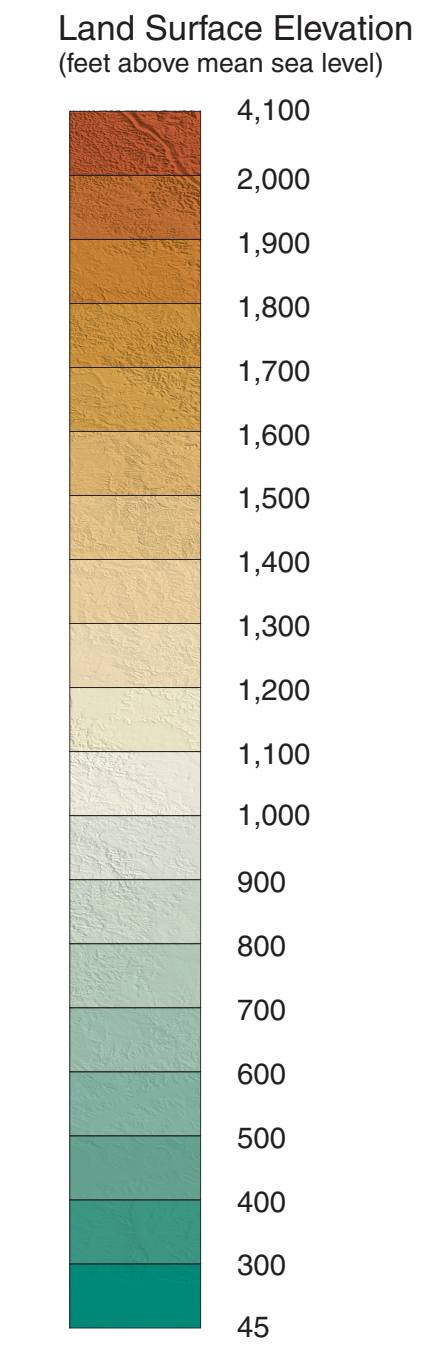
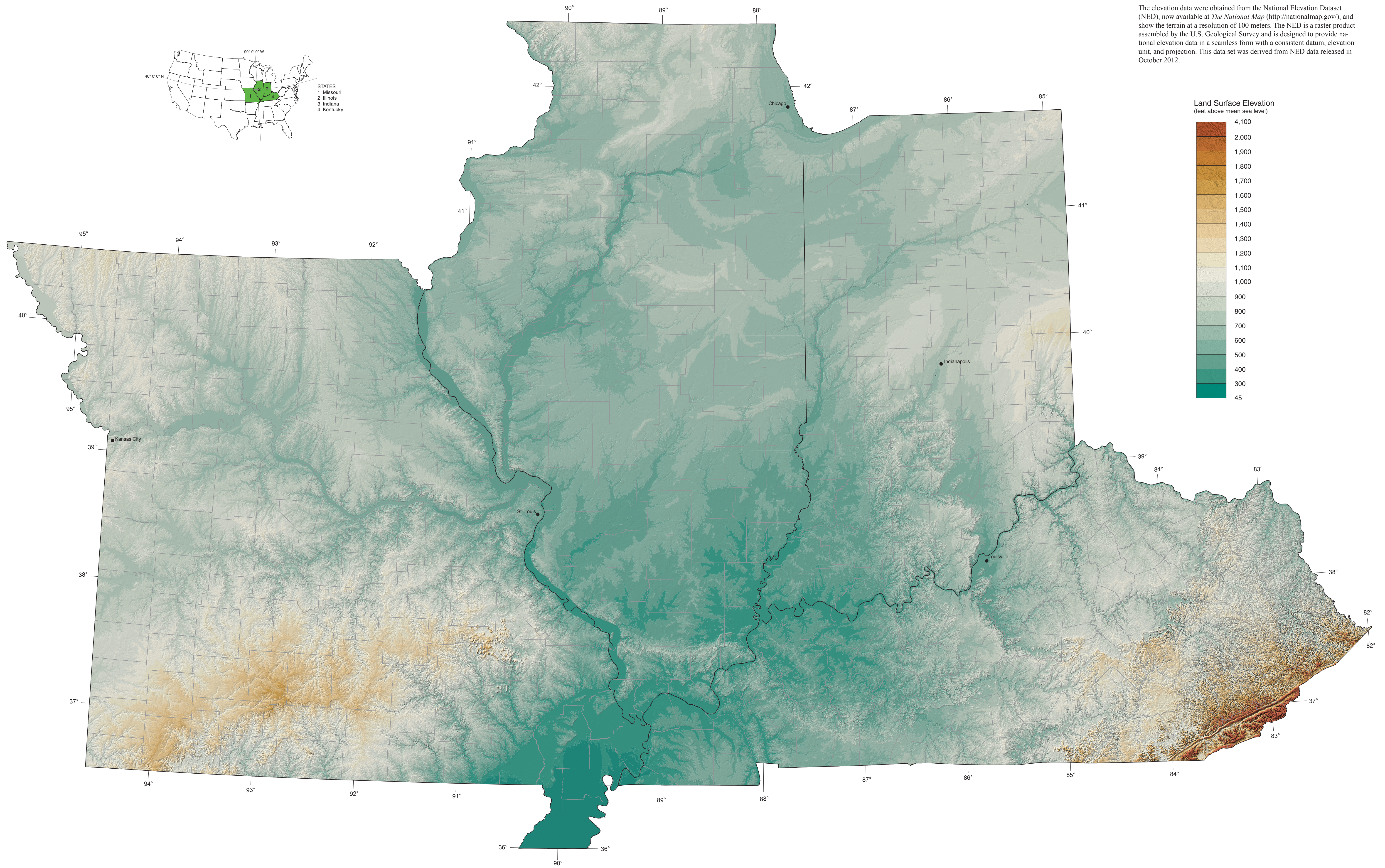
GEOLOGICAL AND GEOPHYSICAL MAPS OF THE ILLINOIS BASIN-OZARK DOME REGION

MAP 1: LAND SURFACE TOPOGRAPHY

Digitally compiled by Curtis C. Abert, Stephen Marshak, and Timothy H. Larson
2016

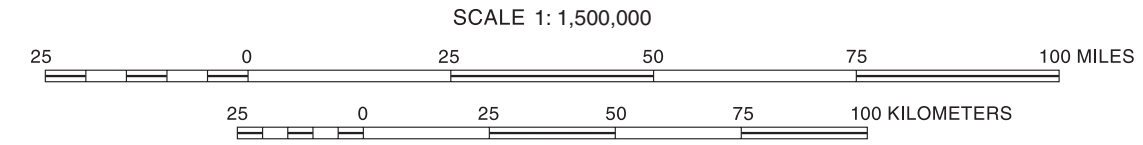
Data Source

The elevation data were obtained from the National Elevation Dataset (NED), now available at *The National Map* (<http://nationalmap.gov/>), and show the terrain at a resolution of 100 meters. The NED is a raster product assembled by the U.S. Geological Survey and is designed to provide national elevation data in a seamless form with a consistent datum, elevation unit, and projection. This data set was derived from NED data released in October 2012.



Vector base data from 2009 Esri Data and Maps
Geographic coordinate system: GCS_WGS_1984
Projection: Lambert Conformal Conic

Recommended citation:
Abert, C.C., S. Marshak, and T.H. Larson, 2016, Map 1: Land surface topography, in S. Marshak, T.H. Larson, and C.C. Abert, compilers, Geological and geophysical maps of the Illinois Basin-Ozark Dome Region; Illinois State Geological Survey, Illinois Map 23-1, 1:1,500,000.



© 2016 University of Illinois Board of Trustees. All rights reserved.
For permission information, contact the Illinois State Geological Survey.

Digital cartography by Curtis C. Abert and Jennifer E. Carrell, Illinois State Geological Survey.

The Illinois State Geological Survey, the University of Illinois, and the State of Illinois make no guarantee, expressed or implied, regarding the correctness of the interpretations presented in this document and accept no liability for the consequences of decisions made by others on the basis of the information presented here. The geologic interpretations are based on data that may vary with respect to the accuracy of geographic location, the type and quantity of data available at each location, and the scientific and technical qualifications of the data sources.