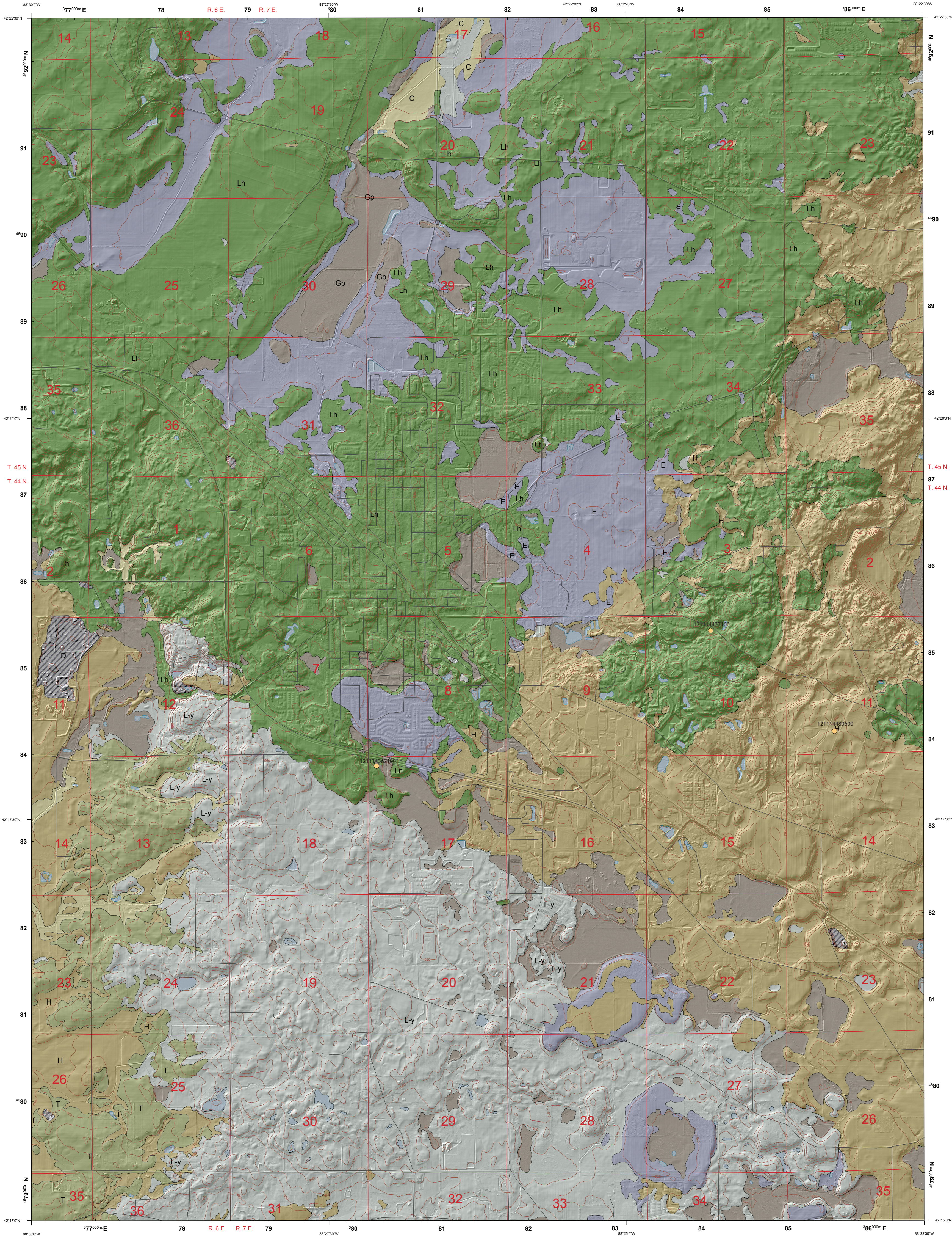


SURFICIAL GEOLOGY OF WOODSTOCK QUADRANGLE
MCHENRY COUNTY, ILLINOIS

Stephen T. Flaherty, Jason F. Thomason, and David H. Malone
2013



QUATERNARY DEPOSITS

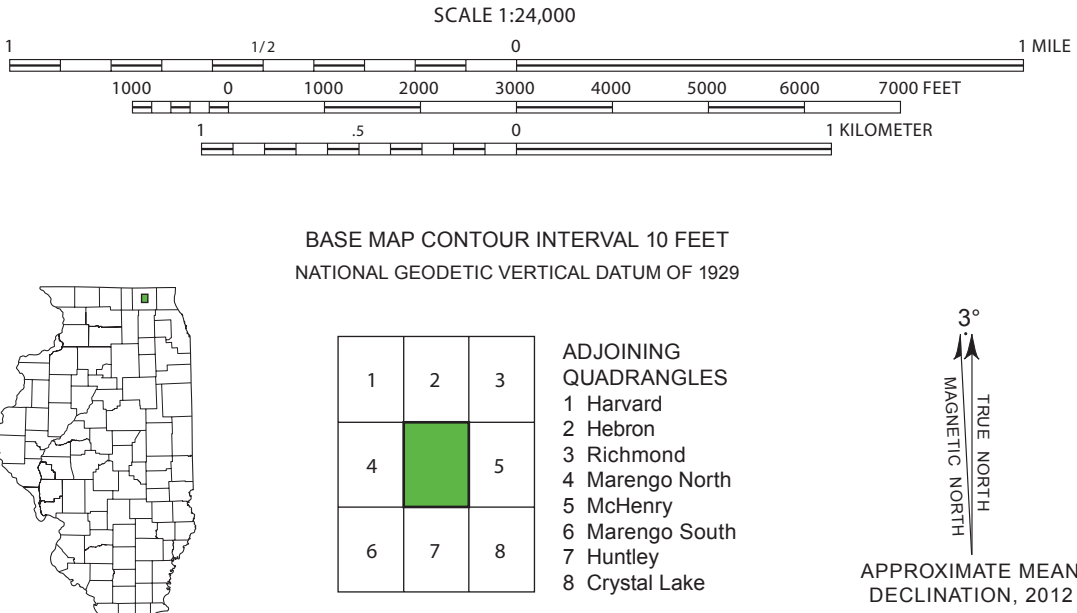
Description	Unit	Interpretation
HUDSON EPISODE (~14,700 years before present (B.P.) to present)		
Fill (disturbed earth material); primarily material reworked from underlying deposits	Disturbed Ground D	Disturbed land; surface materials removed or modified by mining and construction exceeding 30ft
Peat and muck; black to brown; interlayered with sand and silty clay	Grayslake Peat Gp	Wetland vegetation and sediment in depressions and on slopes associated with groundwater discharge.
Sand and gravel, well-sorted sand, and lenses of peat,	Cahokia Formation C	Floodplain alluvium
Silt, clay, and fine sand; layered to massive; with fossilized wood, moss, gastropod shells, and leaves.	Equality Formation E	Lake deposits in ice-walled lakes, and sediment filled kettles.
WISCONSIN EPISODE: Michigan Subepisode (~29,000–14,700 years B.P.)		
Diamictic; dense clayey to silty to sandy loam with interbedded gravel, sand, and silt lenses; light gray.	Heager Member Lh	Till; associated with Woodstock moraine
Sand and gravel, or sand; Stratified coarse sand and gravel with occasional interbedded lenses of silt and clay/lenses of silt and clay, brown to gray.	Henry Formation H	Proglacial outwash; braided stream deposits.
Silt, fine sand; laminated to massive with fossilized wood fragments.	Equality Formation, E	Lake deposits in ice-walled lakes, and sediment filled kettles.
Diamictic; silty clay, silty clay loam, and clay; includes sand and gravel, and silt lenses; gray.	Yorkville Member, Lemont Formation L-y	Till, debris flow deposits, and lake sediment associated with the Barlina and Huntley moraines
Diamictic; loam to sandy loam; with interbedded sand and gravel, and silt lenses; brown to gray.	Tiskilwa Formation T	Till, debris flow deposits, and associated with Huntley moraine

Data Type

121114477100
Stratigraphic boring with logged core and gamma ray logs. API number above graphic.

Contact

Base map compiled by Stephen T. Flaherty from digital data (2011 TIGER/Line Shapefiles) provided by the United States Census Bureau. Hillshade and contours derived from 2008 USGS and IDNR LIDAR source data. Retrieved from Illinois Geospatial Data Clearinghouse
North American Datum of 1983 (NAD 83)
Projection: Transverse Mercator
10,000-foot ticks: Illinois State Plane Coordinate system, east zone (Transverse Mercator)
1,000-meter ticks: Universal Transverse Mercator grid system, zone 16



Geology based on field work by Stephen T. Flaherty (Illinois State University) and Jason F. Thomason (Illinois State Geological Survey).

Digital cartography and legend are based on the Illinois Geologic Quadrangle (IGQ) cartographic format published by the Illinois State Geological Survey independently recreated by Stephen T. Flaherty (Illinois State University). This research was supported in part by the U.S. Geological Survey National Cooperative Geologic Mapping Program (EDMAP). Depictions and explanations in this document are those of the authors and do not necessarily represent official policy.

The authors intend to submit this map for review into the IGQ map series process. Timing of review and publication depend on resources and priorities of the ISGS

The authors of this map make no guarantee regarding the accuracy of interpretations of this map. These interpretations are based off of field observations, NRCS soils polygons, well log data, and borehole data. The authors of this map cannot be held accountable for others' decisions based on this map.