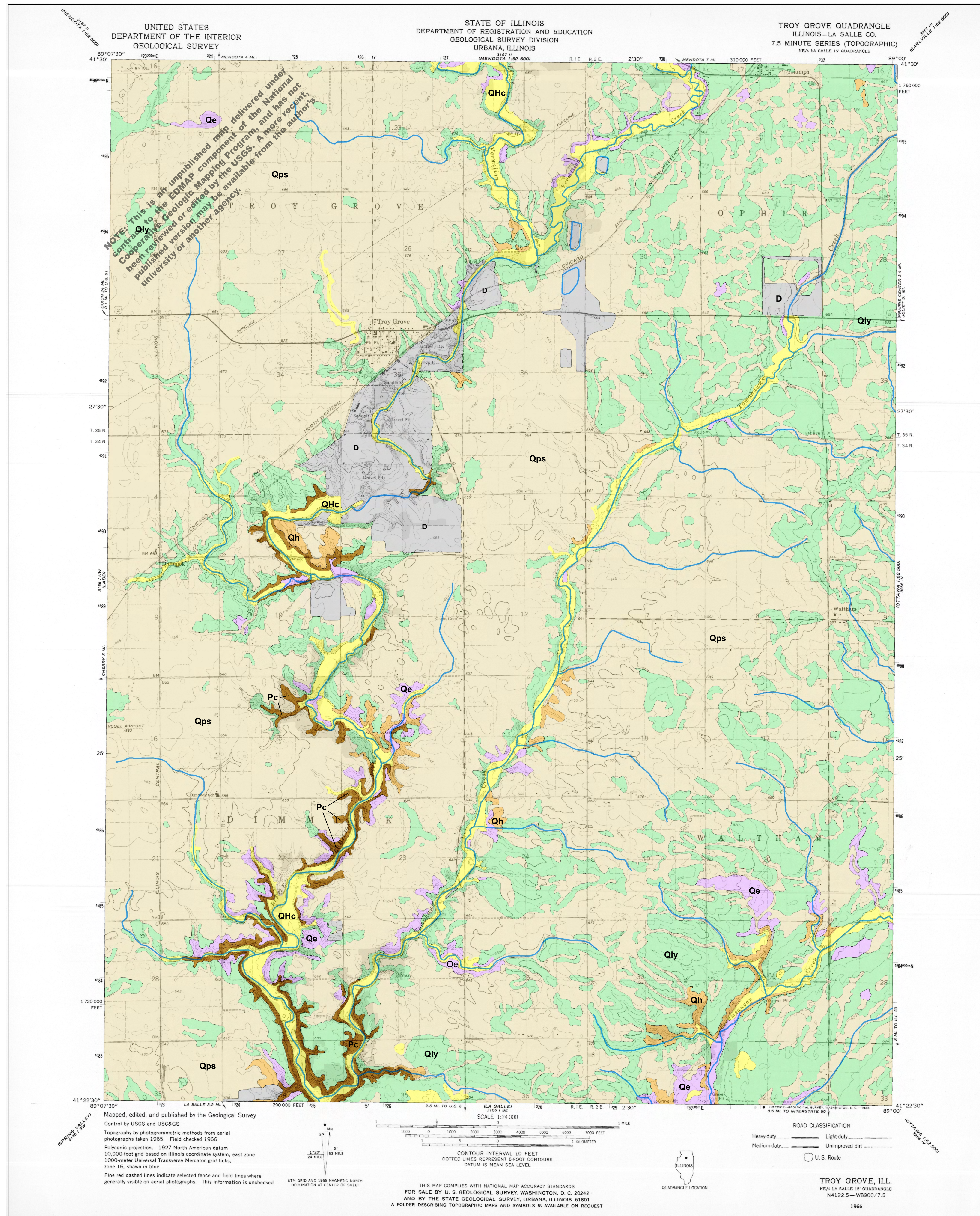


# Surficial Geologic Map of the Troy Grove Quadrangle LaSalle County, Illinois

Evan Bowen, 2007



## Materials

## Lithostratigraphic Units and Interpretations

### Holocene Series

Holocene flood plain deposits **Qhc** Cahokia Alluvium: modern alluvial and floodplain deposits

### Pleistocene Series

#### Wisconsinan Stage

#### Mason Group

Loess greater than 5' **Qps** Peoria Silt: eolian deposits of modern streams and rivers

Bedded silts and clays **Qe** Equality Formation: glacial lake deposits

Bedded sands and gravels **Qh** Henry Formation: glacial Outwash and alluvial fan deposits

#### Wedron Group

Glacial till **Qly** Lemont Formation: intermoraine deposits

### Paleozoic Series

#### Pennsylvanian System

Mostly St. Peter Sandstone and shale **Pc** Undivided Pennsylvanian Bedrock: marine deposits

**D** Disturbed Area

Geologic Contact

Waterway

Hansel, A.K., Johnson, H.W., 1996. Wedron and Mason Groups: Lithostratigraphic Reclassification of Deposits of the Wisconsin Episode, Lake Michigan Lobe Area, Illinois State Geological Survey Bulletin 104, 116 p.

Murphy, J.L., Malone D.H., Nelson, R.S., and Stiff, B.J., 2005. Geologic Map of the Spring Valley, IL 7.5 Minute Quadrangle, Scale 1:24,000. Illinois State Geological Survey EDMAP Series #5.

Shields, W.E., Malone, D.H., and Harp, B.R., 2005. Geologic Map of the LaSalle, IL 7.5 Minute Quadrangle, Scale 1:24,000. Map submitted to the Illinois State Geological Survey.

Willman, H.B., Atherton, E., Buschbach, T.C., Collinson, C., Frye, J.C., Hopkins, M.E., Lineback, J.A., Simon, J.A., 1975. Handbook of Illinois Stratigraphy, Illinois State Geological Survey Bulletin 95, 261p.

[http://www.isgs.uiuc.edu/servs/pubs/map\\_series/quaternary\\_deposits\\_big.htm](http://www.isgs.uiuc.edu/servs/pubs/map_series/quaternary_deposits_big.htm)

<http://www.isgs.uiuc.edu/nsd/home/browse/statewide/bedgeob.gif>