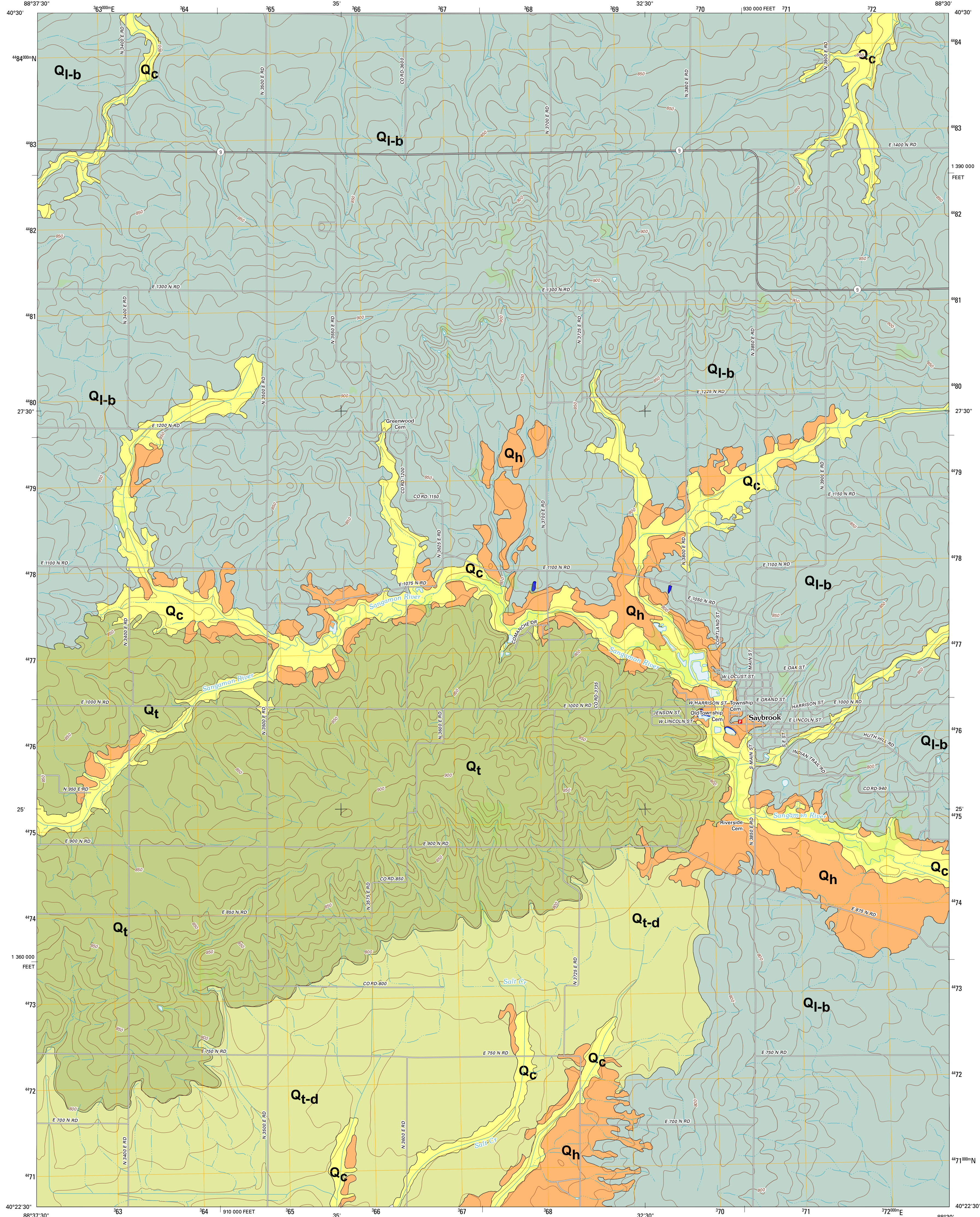




U.S. DEPARTMENT OF THE INTERIOR
U. S. GEOLOGICAL SURVEY



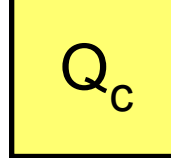
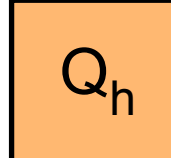
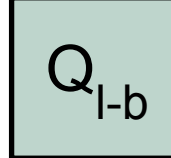
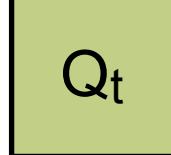
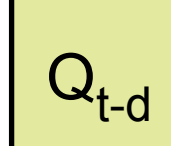
SAYBROOK QUADRANGLE
ILLINOIS-MCLEAN CO.
7.5-MINUTE SERIES



Surficial Geology of Saybrook Quadrangle McLean County, Illinois

Ellyn S. Rickels, David H. Malone
Illinois State University
2016

QUATERNARY DEPOSITS

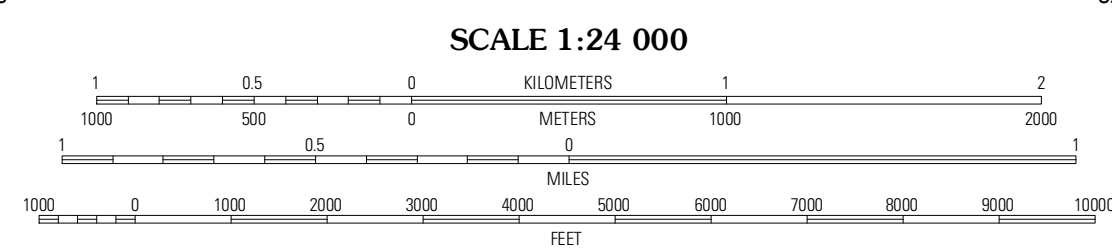
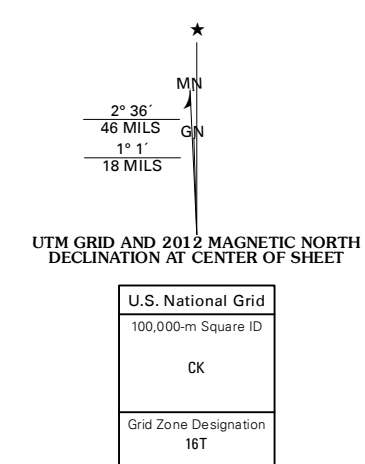
Unit Name	Description
HUDSON EPISODE (~12,000 years before present (B.P.) to present day)	
Cahokia Formation	
	Alluvium (river and floodplain deposits) Interbedded silt, clay, sand, and gravel
WISCONSIN EPISODE (~60,000 - 12,000 years B.P.)	
Mason Group	
Henry Formation	
	Outwash (glacial meltwater deposits) Stratified sand and gravel with lenses of silt
Wedron Group	
Lemont Formation (Batestown Member)	
	Till deposits Diamictic; silt loam to loam; calcareous; lenses of gravel, sand, and clay; medium grained matrix; brown to gray
Tiskilwa Formation (undivided)	
	Till deposits Diamictic; loam to clay loam; calcareous; lenses of gravel, sand, silt, and clay; medium grained matrix; red/pink hue
Tiskilwa Formation (Delavan Member)	
	Till deposits Diamictic; calcareous; lenses of gravel, sand, silt, and clay; medium grained matrix; brown to pinkish-gray

—— Contact

Descriptions of Wisconsin Episode Units can be found in Illinois State Geological Survey Bulletin 104 (Hansel and Johnson, 1996).

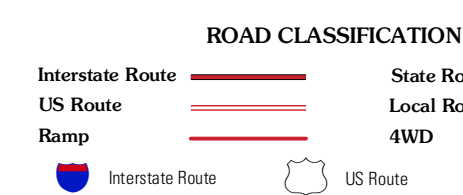
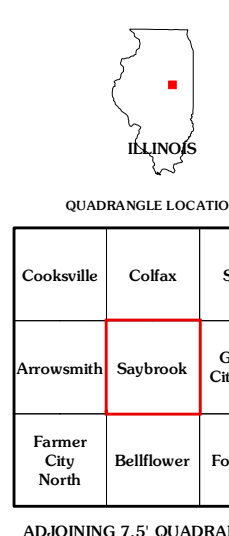
Produced by the United States Geological Survey
North American Datum of 1983 (NAD83)
World Geodetic System of 1984 (WGS84). Projection and
1:100,000 scale grid: Universal Transverse Mercator, Zone 16 T
10 000-foot ticks: Illinois Coordinate System of 1983 (east
zone)

Imagery: NAD, August 2011
Roads: ©2006-2011 TomTom
Names: ©2006-2011 TomTom
Hydrography: National Hydrography Dataset, 2011
Contours: National Elevation Dataset, 2012
Boundaries: Census, BWC, IBC, USGS, 1972 - 2010



CONTOUR INTERVAL 10 FEET
NORTH AMERICAN VERTICAL DATUM OF 1988

This map was produced to conform with the
National Geospatial Program US Topo Product Standard, 2011.
A metadata file associated with this product is draft version 0.6.3



SAYBROOK, IL
2012



Department of Geography-Geology,
Illinois State University,
Campus Box 4400, Normal, IL 61790-4400