

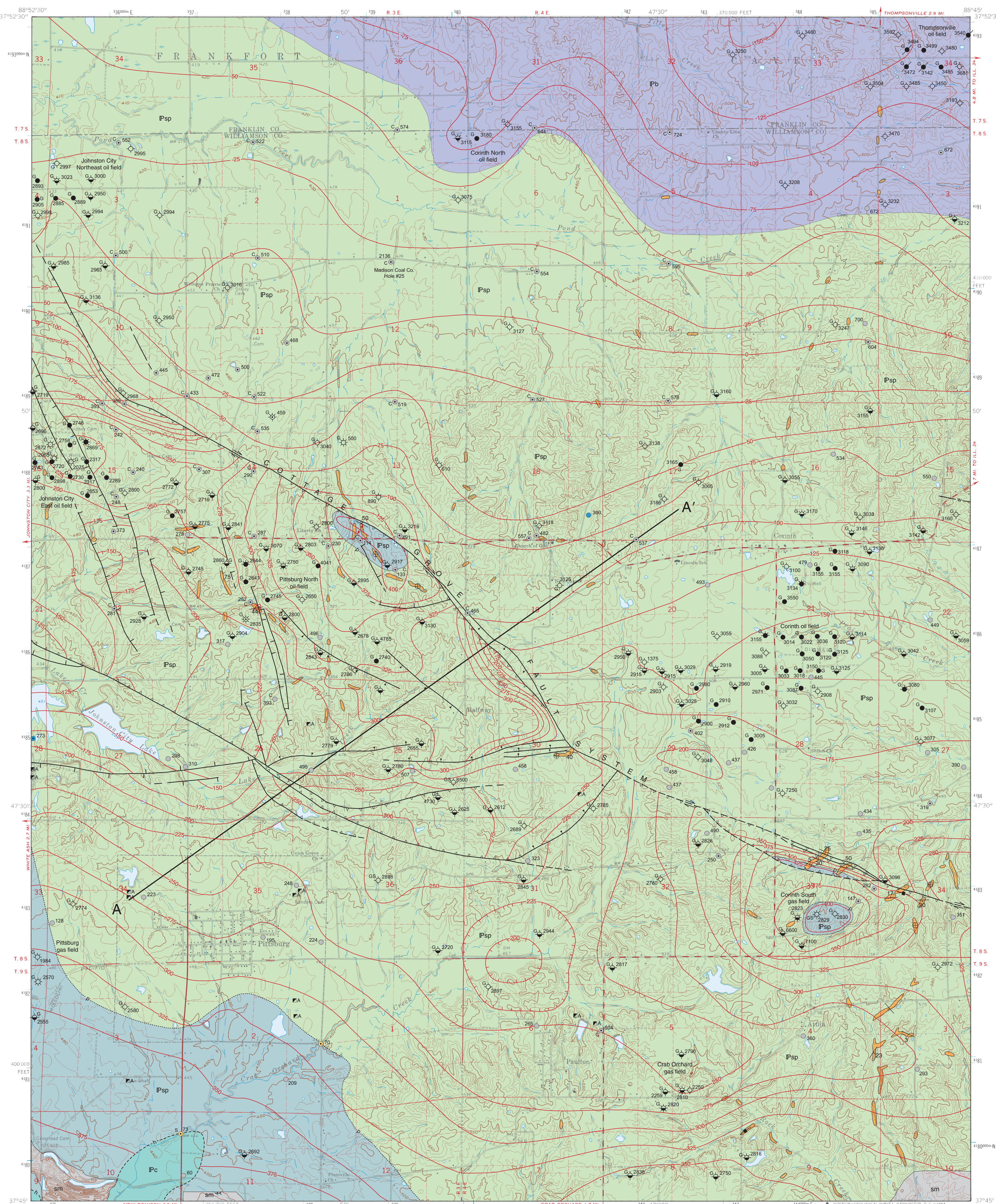
# BEDROCK GEOLOGY OF PITTSBURG QUADRANGLE

## WILLIAMSON AND FRANKLIN COUNTIES, ILLINOIS

Illinois Department of Natural Resources  
ILLINOIS STATE GEOLOGICAL SURVEY  
William W. Shilts, Chief

Illinois Geologic Quadrangle Map  
IGQ Pittsburg-BG

W. John Nelson  
2007



EXPLANATION	
sm	Surface mine
Pb	Bond Formation
Psp	Shelburn and Patoka Formations undivided w, Wornac Coal Member p, Piasa Limestone Member
Pc	Carbonate Formation h, Herrin Coal Member

Missourian  
Desmoinesia

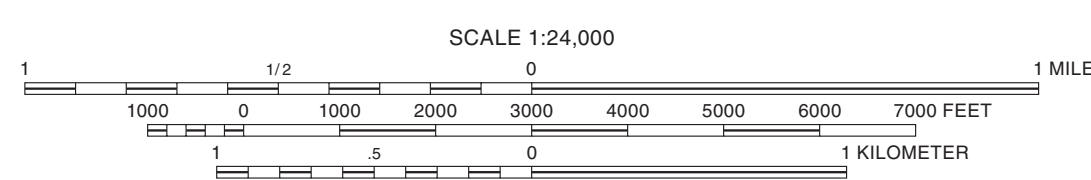
Symbols	
←←	Abandoned drift mine
⊥	Abandoned shaft mine
⊥	Abandoned slope mine
20	Strike and dip of bedding; number indicates degree of dip. If no number, symbol indicates direction of dip only.
⊕	Horizontal bedding
⊥	Vertical joint
⊕	Bedrock outcrop
Drill Holes from which subsurface data were obtained	
○	Stratigraphic boring
●	Water well
○	Coal boring
●	Oil well
○	Dry hole
○	Dry hole - show of oil
○	Dry hole - show of gas
○	Dry hole - show of oil and gas
○	Gas well
○	Gas well - show of oil
○	Oil well - show of gas
○	Oil and gas well
○	Oil well - abandoned
CSO	Numbers indicate total depth of boring in feet. Boring with samples (s), geophysical log (l), or core (-); Dot indicates location accurate within 100 feet.
Line Symbols	
---	dashed where inferred, dotted where concealed
---	Contact or coal subcrop
---	Fault, direction of throw unknown
---	Normal fault: bar and ball on downthrown side
---	Fault, type unknown: ticks on downthrown side
---	High-angle reverse fault: sawtooth on upthrown block
---	Strike-slip fault
---	Elevation of top of Herrin Coal; contour interval 25 feet
---	Anticline observed in outcrop
A—A'	Line of cross section

Note: This is a submap, showing bedrock surface with all Quaternary deposits removed. Geology shown as it was prior to surface mining. Faults are shown where they intersect Herrin Coal. Well and boring records are on file at the ISGS Geological Records Unit and are available from the ISGS Web site.

Base map compiled by Illinois State Geological Survey from digital data provided by the United States Geological Survey. Topography by photogrammetric methods from aerial photographs taken 1959. Field checked 1963.

North American Datum of 1927 (NAD 27)  
Projection: Transverse Mercator  
10,000-foot ticks: Illinois State Plane Coordinate system, east zone (Transverse Mercator)  
1,000-meter ticks: Universal Transverse Mercator grid system, zone 18

Recommended citation:  
Nelson, W.J., 2007. Bedrock Geology of Pittsburg Quadrangle, Williamson and Franklin Counties, Illinois: Illinois State Geological Survey, Illinois Geologic Quadrangle Map, IGQ Pittsburg-BG, 2 sheets, 1:24,000.



BASE MAP CONTOUR INTERVAL 10 FEET  
NATIONAL GEODETIC VERTICAL DATUM OF 1929

Released by the authority of the State of Illinois: 2007

Geology based on field work and data analysis by W.J. Nelson, 2001–2003.

Digital cartography and graphics by J. Dornier, S. Geegan, T. Goepfinger, and L. Verhelst, Illinois State Geological Survey.

The Illinois State Geological Survey, the Illinois Department of Natural Resources, and the State of Illinois make no guarantee, expressed or implied, regarding the correctness of the interpretations presented in this document and accept no liability for the consequences of decisions made by others on the basis of the information presented here. The geologic interpretations are based on data that may vary with respect to accuracy of geographic location, the type and quantity of data available at each location, and the scientific and technical qualifications of the data sources. Maps or cross sections in this document are not meant to be enlarged.



For more information contact:  
Illinois State Geological Survey  
615 East Peabody Drive  
Champaign, Illinois 61820-6964  
(217) 244-2414  
http://www.isgs.uiuc.edu



ADJOINING QUADRANGLES		
1	2	3
4	5	6
7	8	

1 West Frankfort  
2 Thompsonville  
3 Akin  
4 Johnston City  
5 Harco  
6 Marion  
7 Crab Orchard  
8 Carrier Mills

1 1/2°  
APPROXIMATE MEAN DECLINATION, 2007

ROAD CLASSIFICATION	
Primary highway, hard surface	Light-duty road, hard or improved surface
Secondary highway, hard surface	Unimproved road

