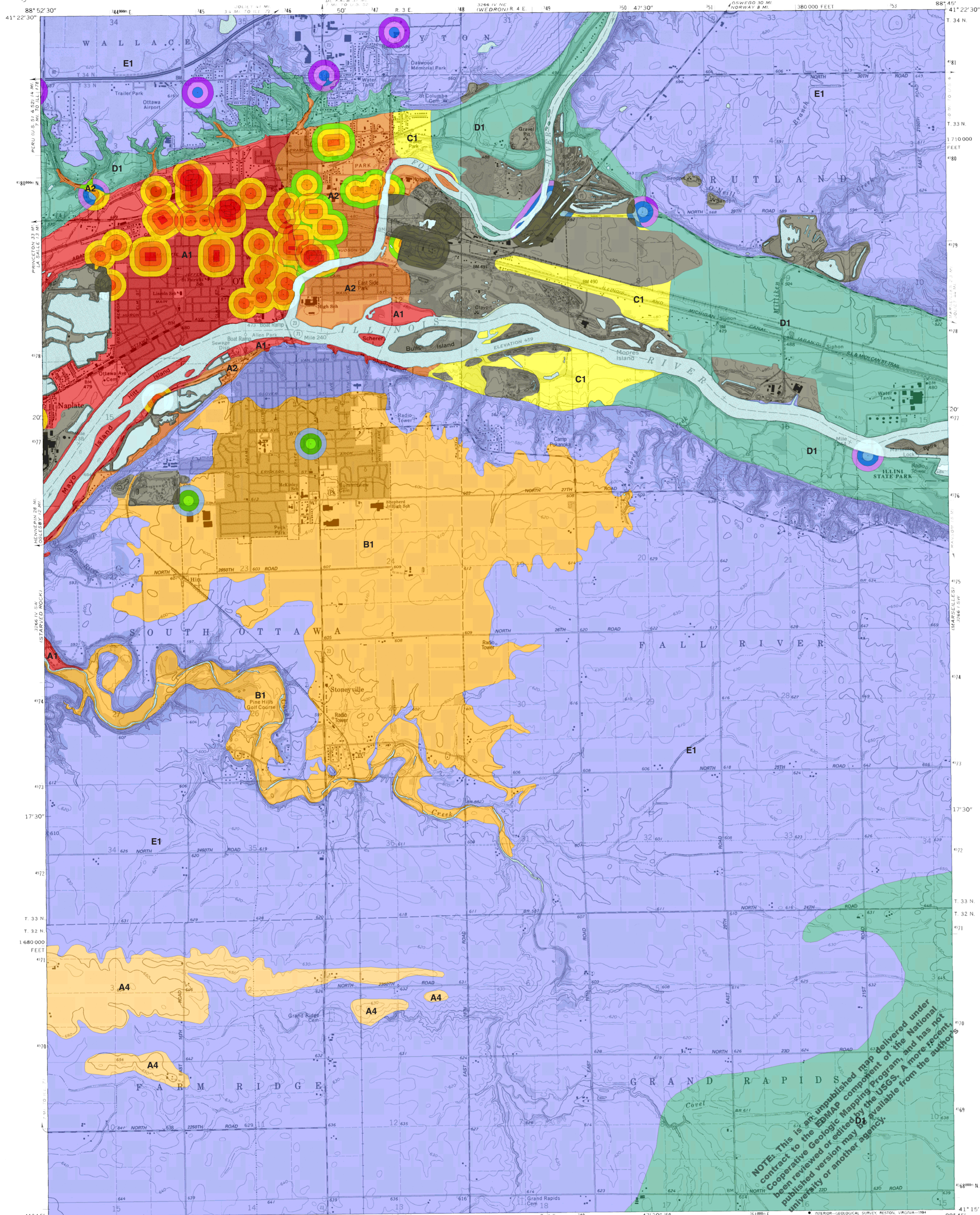


Contamination Potential from Possible Contamination Sites

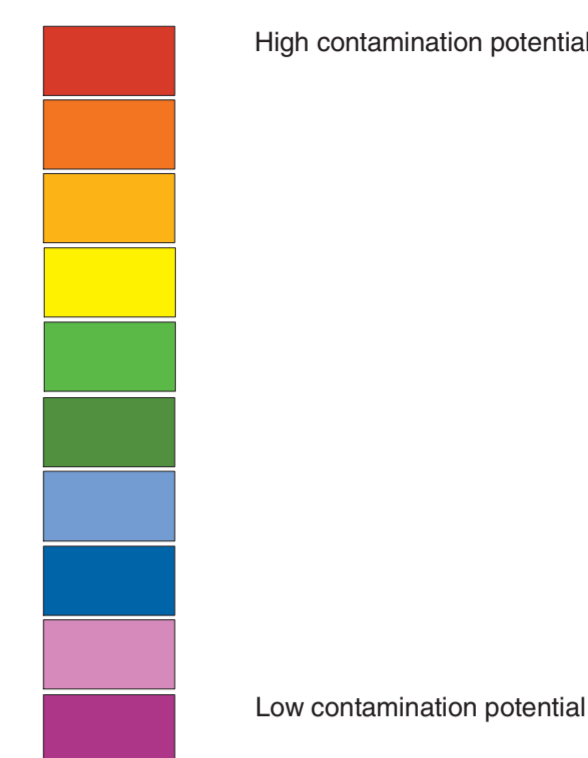
Ottawa Quadrangle, LaSalle County, Illinois

Kara Hart

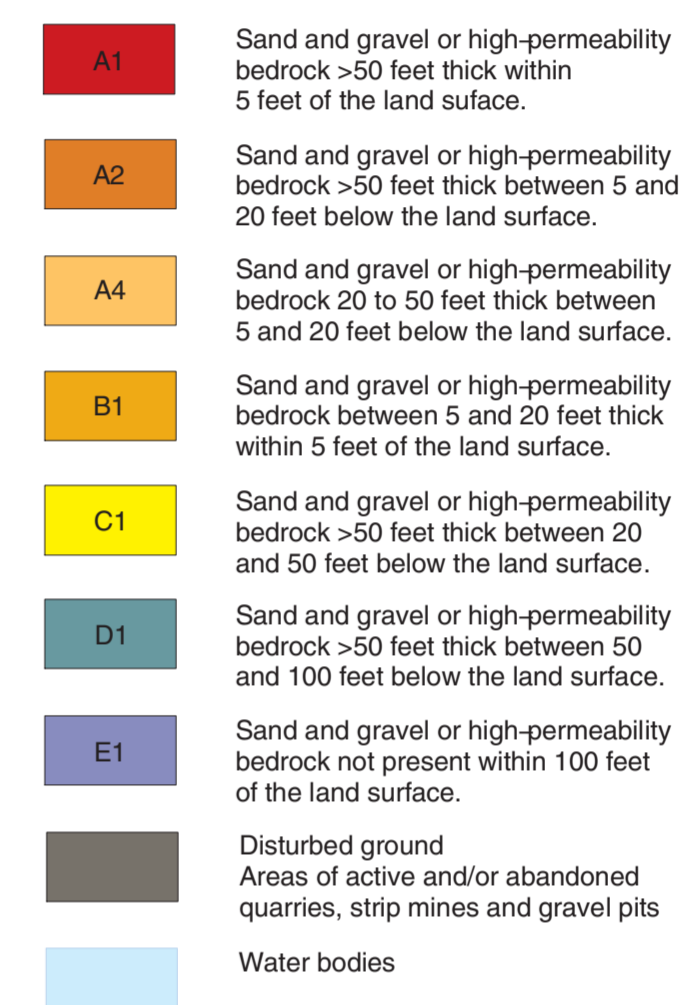
Contamination Potential from Possible Contamination Sites
Ottawa Quadrangle, LaSalle County, Illinois
2002



Contamination Potential from Possible Contamination Sites



Aquifer Sensitivity Classification



Several data sources were used to create the contamination potential map.
*Tom Williams from Illinois Environmental Protection Agency
*United States Environmental Protection Agency's Envirofacts Data Warehouse
*Matt Mankowski the Remedial Project Manager of the Ottawa Radiation Areas Superfund Site

Alexander, J.D., and J.E., Paschke, 1972, Soil Survey of LaSalle County, Illinois: Illinois Agricultural Experiment Station with U.S.D.A. Soil Conservation Service, 140 p.

Berg, R.C., 2001, Aquifer Sensitivity Classification for Illinois Using Depth to Uppermost Aquifer Material and Aquifer Thickness: Illinois State Geological Survey Circular 560, 14 p.

Cady, G.H., 1919, Geology and Mineral Resources of the Hennepin and LaSalle Quadrangle: Illinois Geological Survey Bulletin 37, 136 p.

Hansel, A.K., and W.H. Johnson, 1996, Wedron and Mason Groups: Lithostatic Reclassification of Deposits of the Wisconsin Episode, Lake Michigan Lobe Area: Illinois State Geological Survey Bulletin 104, 116 p.

Larson, T.H., 1994, Geophysical Investigation of the Ticona Bedrock Valley Aquifer near Streator, Illinois: Illinois State Geological Survey Open File Series, 24 p.

Leverett, F., 1899, The Illinois Glacial Lake: United States Geological Survey Monograph 38, 817 p.

Lineback, J., 1979, Quaternary Deposits of Illinois: Illinois State Geological Survey Map, Scale 1:500,000.

Nelson, W.J., 1995, Structural Features of Illinois: Illinois State Geological Survey Bulletin 100, 144 p.

Nelson, R.S., D.H. Malone, R.J. Jacobson, and W.T. Frankie, 1996, Guide to the Geology of the Buffalo Rock and Mathiessen State Parks Area, LaSalle County, Illinois: Illinois State Geological Survey Field Trip Guidebook 1996C, 62 p.

Willman, H.B., and J.C. Frye, 1970, Pleistocene Stratigraphy of Illinois: Illinois State Geological Survey Bulletin 94, 261 p.

Willman, H.B., and others, 1967, Geologic Map of Illinois: Illinois State Geological Survey Map, Scale 1:500,000

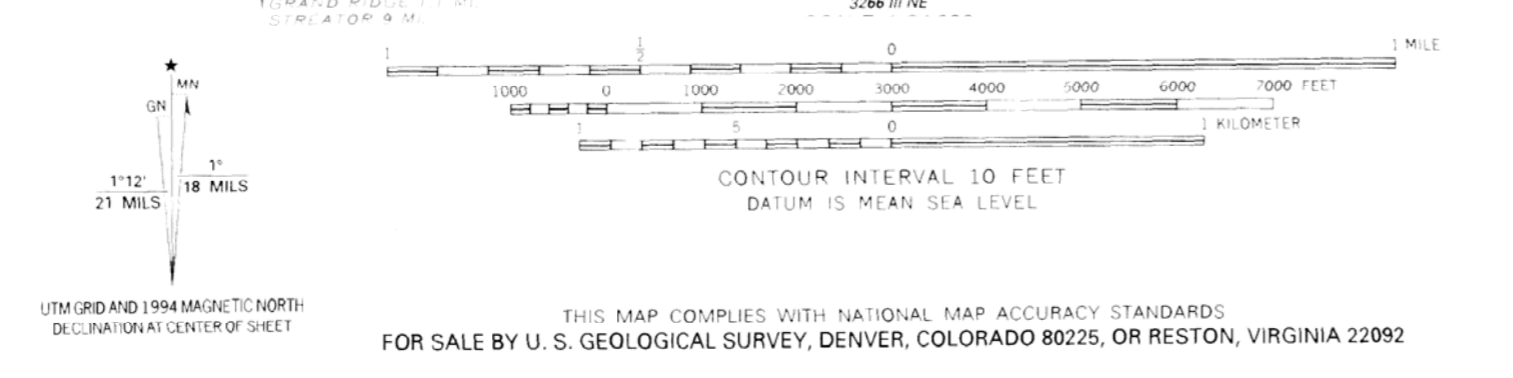
Willman, H.B., and others, 1975, Handbook of Illinois Stratigraphy: Illinois State Geological Survey Bulletin 95, 261 p.

Willman, H.B., and D.R. Kolata, 1978, The Platteville and Galena Groups in Northern Illinois: Illinois State Geological Survey Circular 502, 75 p.

Willman, H.B., and J.N. Payne, 1942, Geology and Mineral Resources of the Marseilles, Ottawa, and Streator Quadrangles: Illinois Geological Survey Bulletin 66, 388 p.

* The author wishes to thank Barb Stiff for teaching her how to use ArcGIS 8 workstation and for all of Barb's patience. The author also wishes to thank David Grimley for his help interpreting soils maps.*

Produced by the United States Geological Survey
Control by USGS and NOS/NOAA
Topography by photogrammetric methods from aerial photographs taken 1967. Field checked 1970. Revised from aerial photographs taken 1988. Field checked 1993. Map edited 1994
Projection and 10,000-foot grid ticks: Illinois coordinate system, east zone (transverse Mercator)
1000-meter Universal Transverse Mercator grid ticks, zone 16, shown in blue 1927 North American Datum (NAD 27)
North American Datum of 1983 (NAD 83) is shown by dashed corner ticks
The values of the shift between NAD 27 and NAD 83 for 7.5-minute intersections are given in USGS Bulletin 1875
There may be private inholdings within the boundaries of the National or State reservations shown on this map



ROAD CLASSIFICATION
Primary highway, all weather. Light duty road, all weather.
Secondary highway, all weather. Unimproved road, fair or dry weather.
Interstate Route U.S. Route State Route

OTTAWA, ILL.
NE 1/4 OTTAWA 15 QUADRANGLE