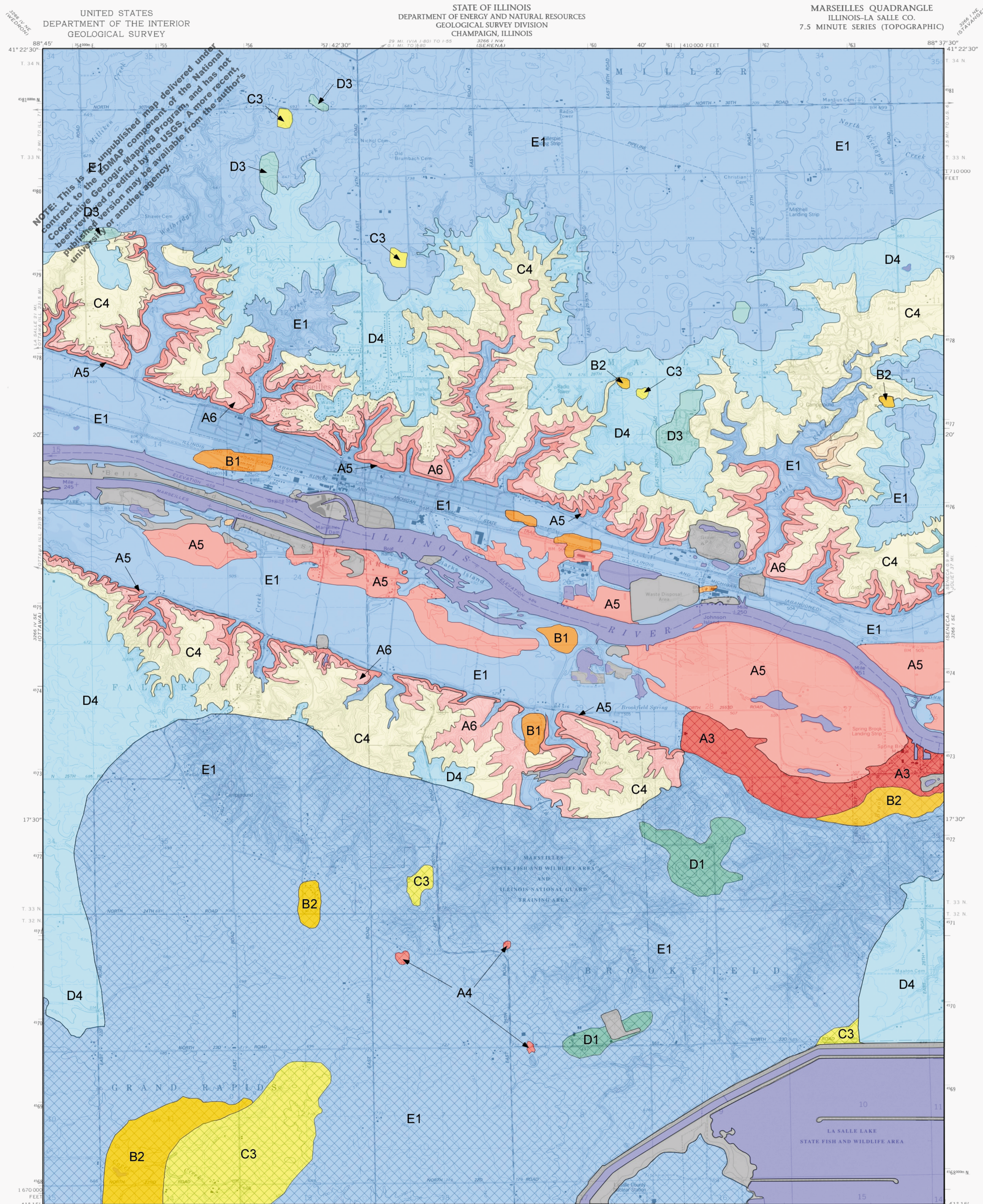


# Plate 2

## General Aquifer Sensitivity Map Marseilles Quadrangle, LaSalle County, Illinois Timothy A. Walls 2004



### Aquifer Sensitivity Classification

- A3** Sand and gravel or high-permeability bedrock 20 to 50 feet thick within 5 feet of the land surface.
- A4** Sand and gravel or high-permeability bedrock 20 to 50 feet thick between 5 and 20 feet below the land surface.
- A5** Cemented sandstone within 5 feet of the land surface.
- A6** Cemented sandstone between 5 and 20 feet below the land surface.
- B1** Sand and gravel or high-permeability bedrock between 5 and 20 feet thick within 5 feet of the land surface.
- B2** Sand and gravel or high-permeability bedrock between 5 and 20 feet thick between 5 and 20 feet below land surface.
- C3** Sand and gravel or high-permeability bedrock <20 feet thick between 20 and 50 feet below land surface.
- C4** Cemented sandstone between 20 and 50 feet below the land surface.
- D1** Sand and gravel or high-permeability bedrock >50 feet thick between 50 and 100 feet below the land surface.
- D3** Sand and gravel or high-permeability bedrock <20 feet thick between 50 and 100 feet below land surface.
- D4** Cemented sandstone between 50 and 100 feet below the land surface.
- E1** Sand and gravel or high-permeability bedrock not present within 100 feet of the land surface.
- Ticona Aquifer: Area where the Pearl Formation sand and gravel is present at depth.
- Disturbed ground: Areas of active and/or abandoned quarries, strip mines, and gravel pits.
- Water bodies.

Alexander, J.D., and Paschke, J.E., 1972, Soil Survey of LaSalle County, Illinois: Illinois Agricultural Experiment Station with U.S.D.A. Soil Conservation Service, 140 p.

Berg, R.C., 2001 Aquifer Sensitivity Classification for Illinois Using Depth to Uppermost Aquifer Material and Aquifer Thickness: Illinois State Geological Survey Circular 560, 14 p.

Cady, G.H., 1919, Geology and Mineral Resources of the Hennepin and LaSalle Quadrangle: Illinois State Geological Survey Bulletin 104, 116 p.

Hansel, A.K., and Johnson, W.H., 1996. Wedron and Mason Groups: Lithostratigraphic Reclassification of Deposits of the Wisconsin Episode, Lake Michigan Lobe Area. Illinois State Geological Survey Bulletin 104. 116p.

Hart K., 2002. Surficial Geologic Map of the Ottawa Quadrangle, LaSalle County, Illinois. Scale 1:24,000

Larson, T.H., 1994, Geophysical Investigation of the Ticona Bedrock Valley Aquifer near Streator, Illinois: Illinois State Geological Survey Open Files Series, 24 p.

Lineback J.A., 1979. Quaternary Deposits of Illinois. Illinois State Geological Survey Map. Scale 1:500,000.

Nelson R.S., Malone, D.H., Jacobson, R.J., and Frankie, W.T., 1996. Guide to the Geology of Buffalo Rock and Matthiessen State Parks Area, LaSalle County. Illinois. Illinois State Geological Survey Fieldtrip Guidebook 1996c. 62p.

Thomason J., 2000. Surficial Geologic Map of the Starved Rock Quadrangle, LaSalle County, Illinois. Scale 1:24,000.

Willems B.A., 2004. Surficial Geologic Map of the Leonore Quadrangle, LaSalle County, Illinois. Scale 1:24,000.

Willman H.B., Atherton E., Buschbach T.C., Collinson C., Frye J.C., Hopkins M.E., Lineback J.A., and Simon J.A., 1975. Handbook of Illinois Stratigraphy. Illinois State Geological Survey Bulletin 95. 261p.

Willman H.B., and Others, 1967, Geologic Map of Illinois. Illinois State Geological Survey Map. Scale 1:500,000.

Willman H.B., Payne J. N., 1942. Geology and Mineral Resources of the Marseilles, Ottawa, and Streator Quadrangles, Illinois State Geological Survey Bulletin 66. Illinois State Geological Survey. 388p.

Produced by the United States Geological Survey  
 Control by USGS and NOS/NOAA  
 Topography by photogrammetric methods from aerial photographs taken 1967. Field checked 1970. Revised from aerial photographs taken 1988. Field checked 1993. Map edited 1994  
 Projection and 10,000-foot grid ticks: Illinois coordinate system, east zone (Transverse Mercator)  
 100-meter Universal Transverse Mercator grid ticks, zone 16, shown in blue  
 1927 North American Datum (NAD 27)  
 North American Datum of 1983 (NAD 83) is shown by dashed corner ticks  
 The values of the shift between NAD 27 and NAD 83 for 7.5-minute intersections are given in USGS Bulletin 1875  
 There may be private encroachments within the boundaries of the National or State reservations shown on this map  
 Red tint indicates areas in which only landmark buildings are shown  
 Fine red dashed lines indicate selected fence and field lines which generally visible on aerial photographs. This information is unchecked

SCALE 1:24,000  
 CONTOUR INTERVAL 10 FEET  
 NATIONAL GEODETIC VERTICAL DATUM OF 1929

ROAD CLASSIFICATION  
 Primary highway, hard surface  
 Light duty road, hard or improved surface  
 Secondary highway, hard surface  
 Unimproved road  
 Interstate Route  
 U. S. Route  
 State Route

MARSEILLES, ILL.  
 41088-C6-TF-024  
 1994  
 DMA 3266 1 SW - SERIES V863