

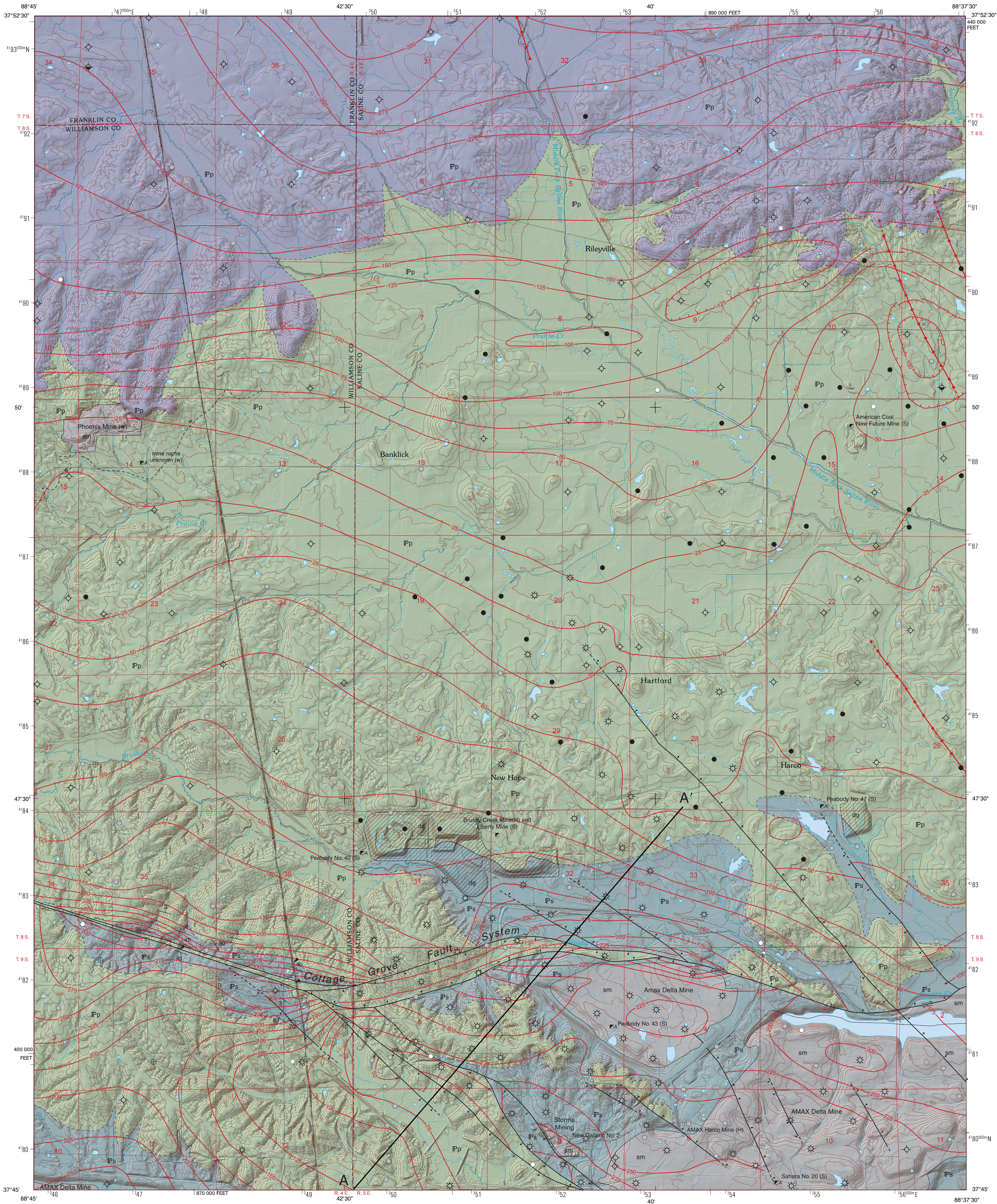
BEDROCK GEOLOGY OF HARCO QUADRANGLE

SALINE, WILLIAMSON, AND FRANKLIN COUNTIES, ILLINOIS

Prairie Research Institute
 ILLINOIS STATE GEOLOGICAL SURVEY

W. John Nelson and F. Brett Denny
 2015

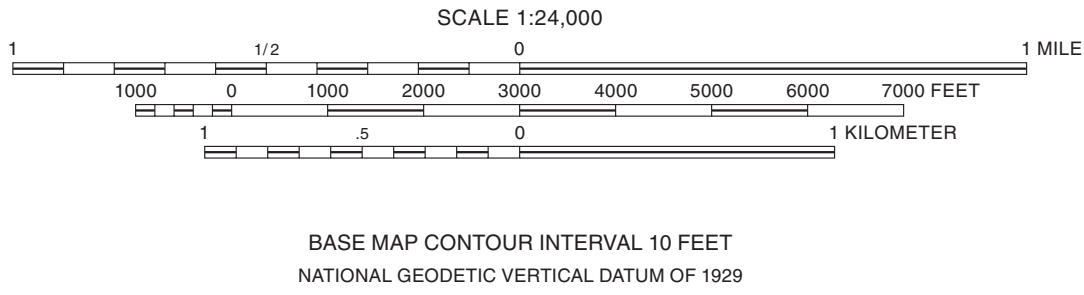
STATEMAP Harco-BG



Base map compiled by Illinois State Geological Survey from digital data (2012 U.S. Topo) provided by the United States Geological Survey. Contours and shaded relief derived from LIDAR data provided by Saline County (2011), Williamson County (2011), and Franklin County (2014).

North American Datum of 1983 (NAD 83)
 Projection: Transverse Mercator
 10,000-foot ticks: Illinois Coordinate System of 1983, east zone
 1,000-meter ticks: Universal Transverse Mercator grid system, zone 16

Recommended citation:
 Nelson, W.J., and F.B. Denny, 2015, Bedrock Geology of Harco Quadrangle, Saline, Williamson, and Franklin Counties, Illinois: Illinois State Geological Survey, USGS-STATEMAP contract report, 2 sheets, 1:24,000, report, 4 p.



© 2015 University of Illinois Board of Trustees. All rights reserved.
 For permission information contact the Illinois State Geological Survey.

ILLINOIS STATE GEOLOGICAL SURVEY
 PRAIRIE RESEARCH INSTITUTE
 ILLINOIS
 UNIVERSITY OF ILLINOIS AT URBANA-CHAMPAIGN
 Prairie Research Institute
 Illinois State Geological Survey
 615 East Peabody Drive
 Champaign, Illinois 61820-6918
 (217) 244-2414
 http://www.isgs.illinois.edu



1	2	3
4	5	
6	7	8

ADJOINING QUADRANGLES
 1. Thompsonville
 2. Akin
 3. Walpole
 4. Pittsburg
 5. Galatia
 6. Crab Orchard
 7. Carver Mills
 8. Harrisburg

2 1/2°
 APPROXIMATE MEAN DECLINATION, 2015

ROAD CLASSIFICATION

U.S. Route
 State Route
 Local road

EXPLANATION

- dg Disturbed ground, over underlying unit (reclaimed mine site)
 sm Surface mine
 Pb Bond Formation
 Pp Patoka Formation w. Womac Coal
 Ps Shelburn Formation
 Missourian
 Pennsylvanian
 Desmoinesian

Symbols

- 40 Strike and dip of bedding; number indicates degree of dip
 Horizontal bedding
 Shaft mine (abandoned)
 Slope mine
 Slope mine (abandoned)
 Abandoned drift mine
 Outcrop of special note, shown where contact or map unit was well exposed at time of mapping
 Oil well
 Coal boring
 Dry note
 Coal bed methane boring

Line Symbols

- dashed where inferred, dotted where concealed
 Igneous dike (Permian age)
 Contact
 Fault, direction of throw unknown
 Normal fault: bar and ball on downthrown side
 Strike-slip fault
 Structure contour of the top of the Springfield Coal (contour interval is 25 feet)
 A—A' Line of cross section

Geology based on field work by W. John Nelson, F. Brett Denny, and Scott D. Erick, 2015.

Digital cartography by Jennifer E. Carrell, Donald E. Luman, and Trisha S. Rentschler, Illinois State Geological Survey.

This geologic map was funded in part by the USGS National Cooperative Geologic Mapping Program under StateMap award number G14AC00328, 2014. The views and conclusions contained in this document are those of the authors and should not be interpreted as necessarily representing the official policies, either expressed or implied, of the U.S. Government.

This map has not undergone the formal Illinois Geologic Quadrangle map review process. Whether or when this map will be formally reviewed and published depends on the resources and priorities of the ISGS.

The Illinois State Geological Survey and the University of Illinois make no guarantee, expressed or implied, regarding the correctness of the interpretations presented in this document and accept no liability for the consequences of decisions made by others on the basis of the information presented here. The geologic interpretations are based on data that may vary with respect to the accuracy of geographic location, the type and quality of data available at each location, and the scientific and technical qualifications of the data sources. Maps or cross sections in this document are not meant to be enlarged.

STATEMAP Harco-BG Sheet 2 of 2