

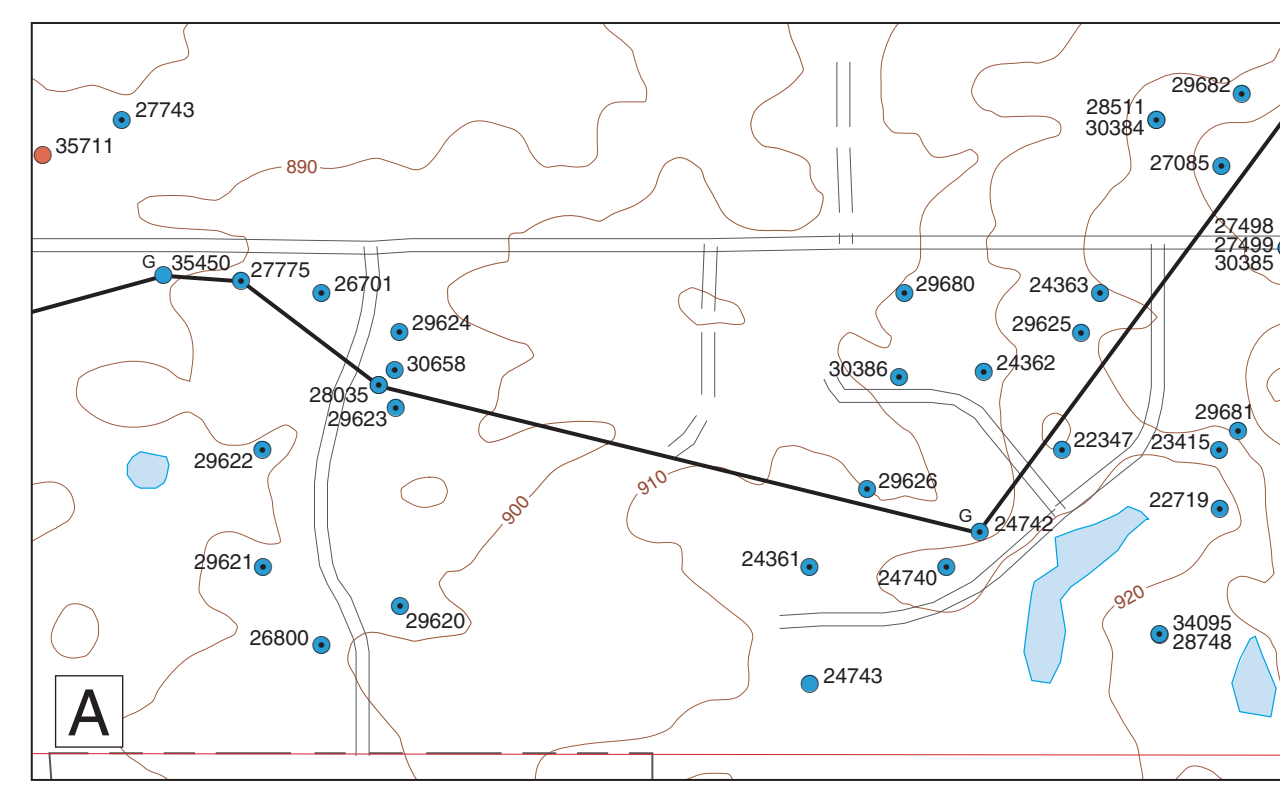
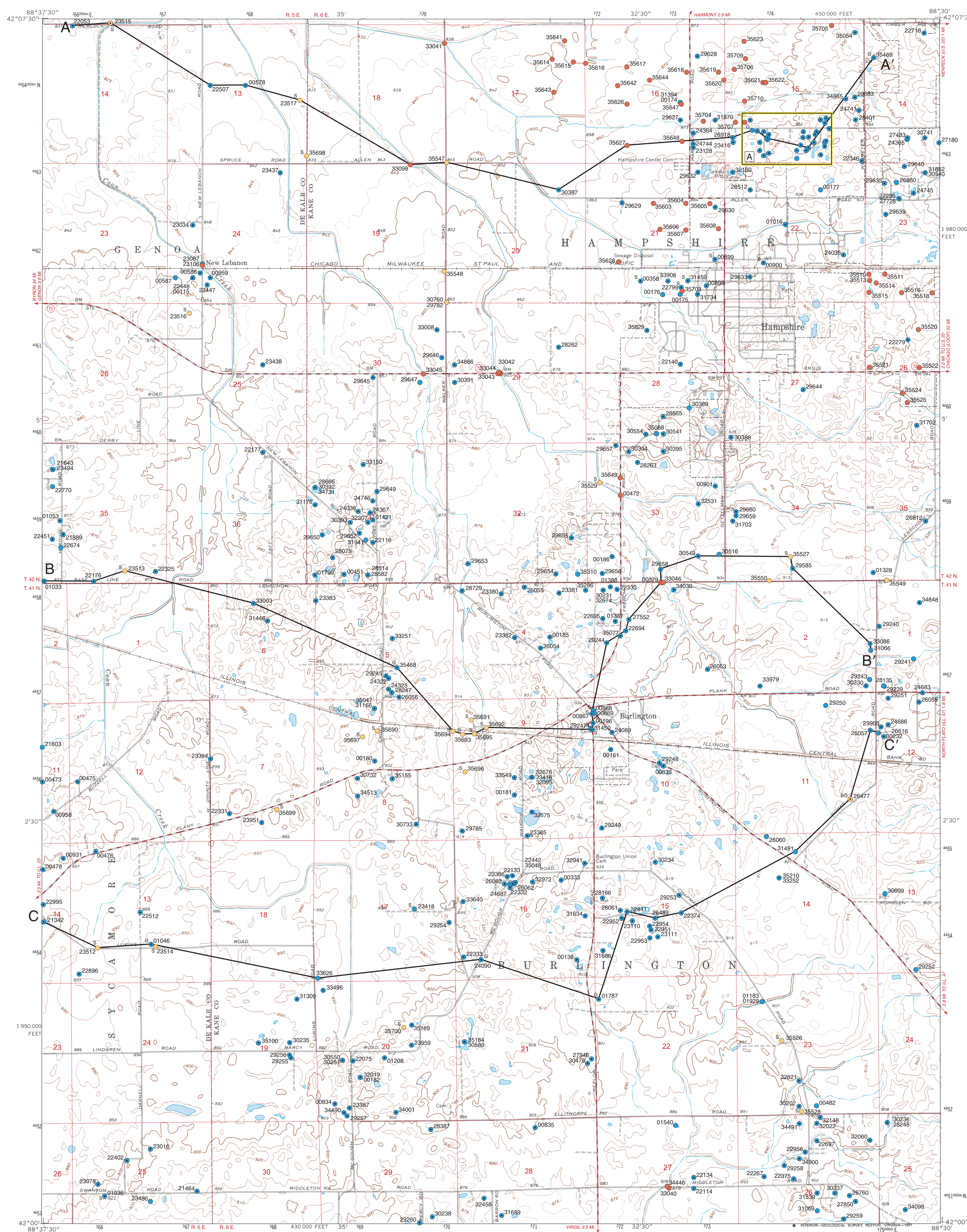
DATA POINT LOCATIONS OF HAMPSHIRE QUADRANGLE

DEKALB AND KANE COUNTIES, ILLINOIS

Illinois Department of Natural Resources
ILLINOIS STATE GEOLOGICAL SURVEY
William W. Shilts, Chief

B. Brandon Curry
2008

Illinois Geologic Quadrangle Map
IGQ Hampshire-DP



Data Type

- Stratigraphic boring
- Water well
- Engineering boring

Labels indicate samples (s) or geophysical log (g).
Numeric labels indicate the county number.
Outcrop labels indicate geologist's field number.
Dot indicates boring is to bedrock.

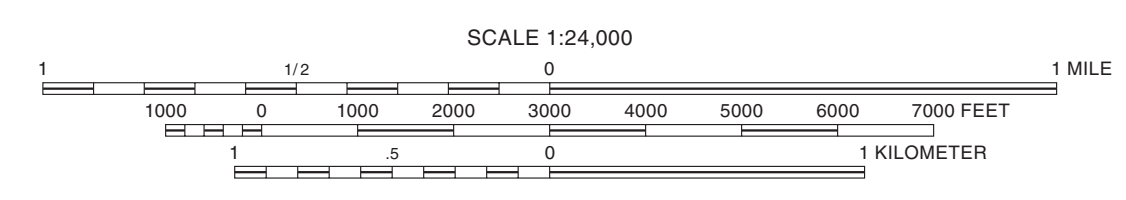
A—A' Line of cross section

Note: The county number is a portion of the 12-digit API number on file at the ISGS Geological Records Unit. Most well and boring records are available online from the ISGS Web site.

Base map compiled by Illinois State Geological Survey from digital data provided by the United States Geological Survey. Topography by photogrammetric methods from aerial photographs taken 1965, field checked 1968. PLSS current as of 1968. Transportation, hydrology, and boundary features current as of 1998.

North American Datum of 1927 (NAD 27)
Projection: Transverse Mercator
10,000-foot ticks: Illinois State Plane Coordinate system, east zone (Transverse Mercator)
1,000-meter ticks: Universal Transverse Mercator grid system, zone 16

Recommended citation:
Curry, B.B., 2008. Data point locations of Hampshire Quadrangle, DeKalb and Kane Counties, Illinois; Illinois State Geological Survey, Illinois Geologic Quadrangle Map, IGQ Hampshire-DP, 1:24,000.



BASE MAP CONTOUR INTERVAL 10 FEET
SUPPLEMENTARY CONTOUR INTERVAL 5 FEET
NATIONAL GEODETIC VERTICAL DATUM OF 1929
Released by the authority of the State of Illinois: 2008

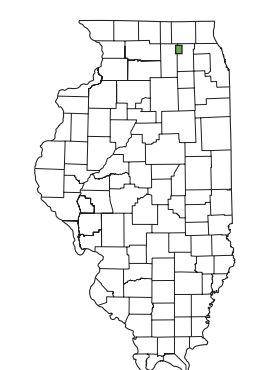
Field work by B. Curry, 1998 and 2005.
Digital cartography by J. Carrell and J. Domier, Illinois State Geological Survey.

This geologic map was funded in part by the USGS National Cooperative Geologic Mapping Program, award number 98HOAG2050. The views and conclusions contained in this document are those of the authors and should not be interpreted as necessarily representing the official policies, either expressed or implied, of the U.S. Government.

The Illinois State Geological Survey, the Illinois Department of Natural Resources, and the State of Illinois make no guarantee, expressed or implied, regarding the correctness of the interpretations presented in this document and accept no liability for the consequences of decisions made by others on the basis of the information presented here. This map is not meant to be enlarged.



For more information contact:
Illinois State Geological Survey
615 East Peabody Drive
Champaign, Illinois 61820-6904
(217) 244-2414
<http://www.isgs.uiuc.edu>



1	2	3
4	5	
6	7	8

ADJOINING QUADRANGLES
1 Riley
2 Marengo South
3 Huntley
4 Genoa
5 Pingree Grove
6 Sycamore
7 Maple Park
8 Eburn

2 1/4"
MAP SCALE ON HORIZONTAL PLANE
APPROXIMATE MEAN DECLINATION, 2008

ROAD CLASSIFICATION

Secondary highway, hard surface: —

Light-duty road, hard or improved surface: —

Unimproved road: ---

State Route: ○