

SURFICIAL GEOLOGY OF GRIDLEY QUADRANGLE MCLEAN AND WOODFORD COUNTIES, ILLINOIS

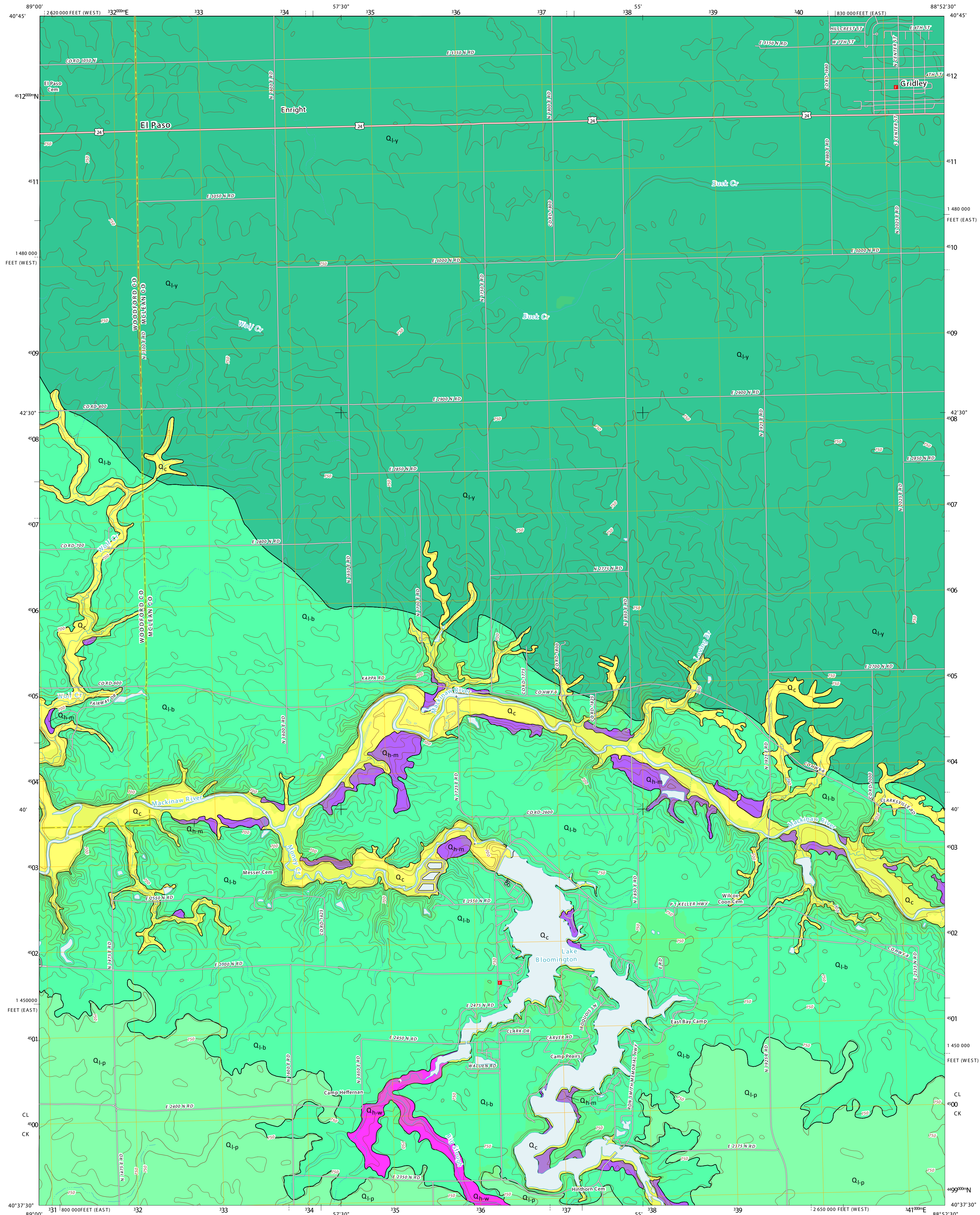


U.S. DEPARTMENT OF THE INTERIOR
U. S. GEOLOGICAL SURVEY

Crystal K. Williams, Dr. David H. Malone
2015



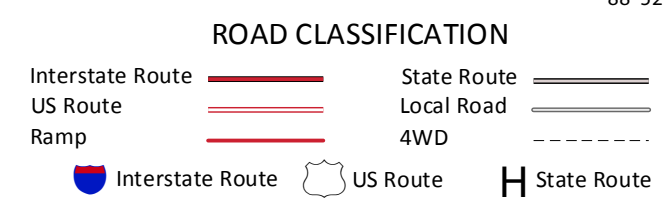
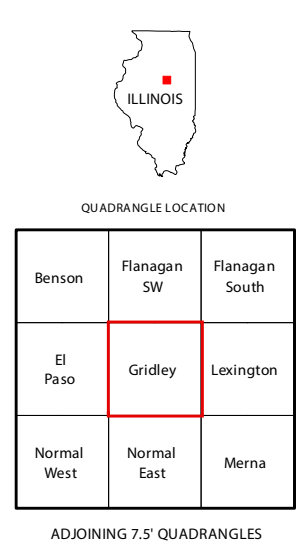
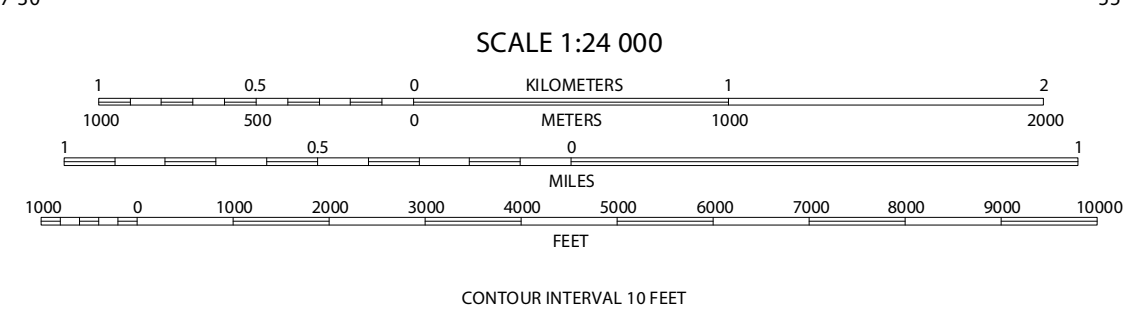
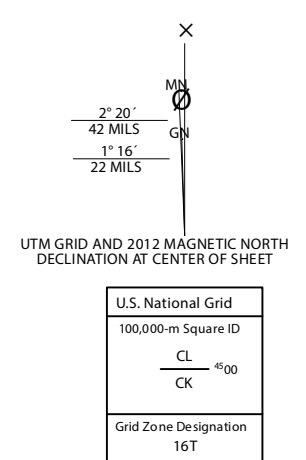
GRIDLEY QUADRANGLE
ILLINOIS
7.5-MINUTE SERIES



QUATERNARY DEPOSITS	
Description	Unit
Alluvium stream deposits, consists of sand, silt and clay with some sandy gravel; yellowish brown to dark gray or black	Cahokia Formation Q _c
Stratified sand and gravel	Henry Formation
Outwash deposited in valleys (valley trains), consists of sandy gravel or pebbly sand, more evenly bedded and uniform in texture than Batavia and Wasco members	Mackinaw Member Q _{h-m}
Outwash deposited from ice-contacts (kames, eskers, and deltas), consists of sand and gravel varying in grain size, sorting, bedding, and structure	Wasco Member Q _{h-w}
Calcareous, gray, fine to coarse textured (silty clay to sandy loam) diamicton units that contain lenses of gravel, sand, silt, and clay	Lemont Formation
Calcareous fine textured (silty clay to silty clay loam) diamicton; dark gray (unoxidized); olive brown (oxidized)	Yorkville Member Q _{f-y}
Calcareous medium textured (silt loam to loam) diamicton; dark gray to gray (unoxidized); brown, olive brown, or yellow brown (oxidized); with some cobbles and few boulders	Batestown Member Q _{f-b}
Batestown overlain with >5 feet of yellowish brown and gray wind-blown silt (loess) with some sand	Batestown with Peoria Silt Q _{l-p}

The surficial geology was created utilizing the following data:
SSURGO (Soil Survey Geographic Database) from the USDA-NRCS
DTM (Digital Terrain Model) derived from LIDAR from the Illinois State Geological Survey
Well logs from the Illinois State Geological Survey

Produced by the United States Geological Survey
North American Datum of 1983 (NAD83)
World Geodetic System of 1984 (WGS84), Projection and
1 000-meter grid; Universal Transverse Mercator, Zone 16T
10 000-foot ticks; Illinois Coordinate System of 1983 (east
and west zones)



GRIDLEY, IL
2012

Imagery: NAIP, August 2011
Roads: 2006-2011 TomTom
Names: GNS, 2011
Hydrography: National Hydrography Dataset, 2011
Contours: National Elevation Database, 2012
Boundaries: Census, IBWC, IBC, USGS, 1972 - 2010

