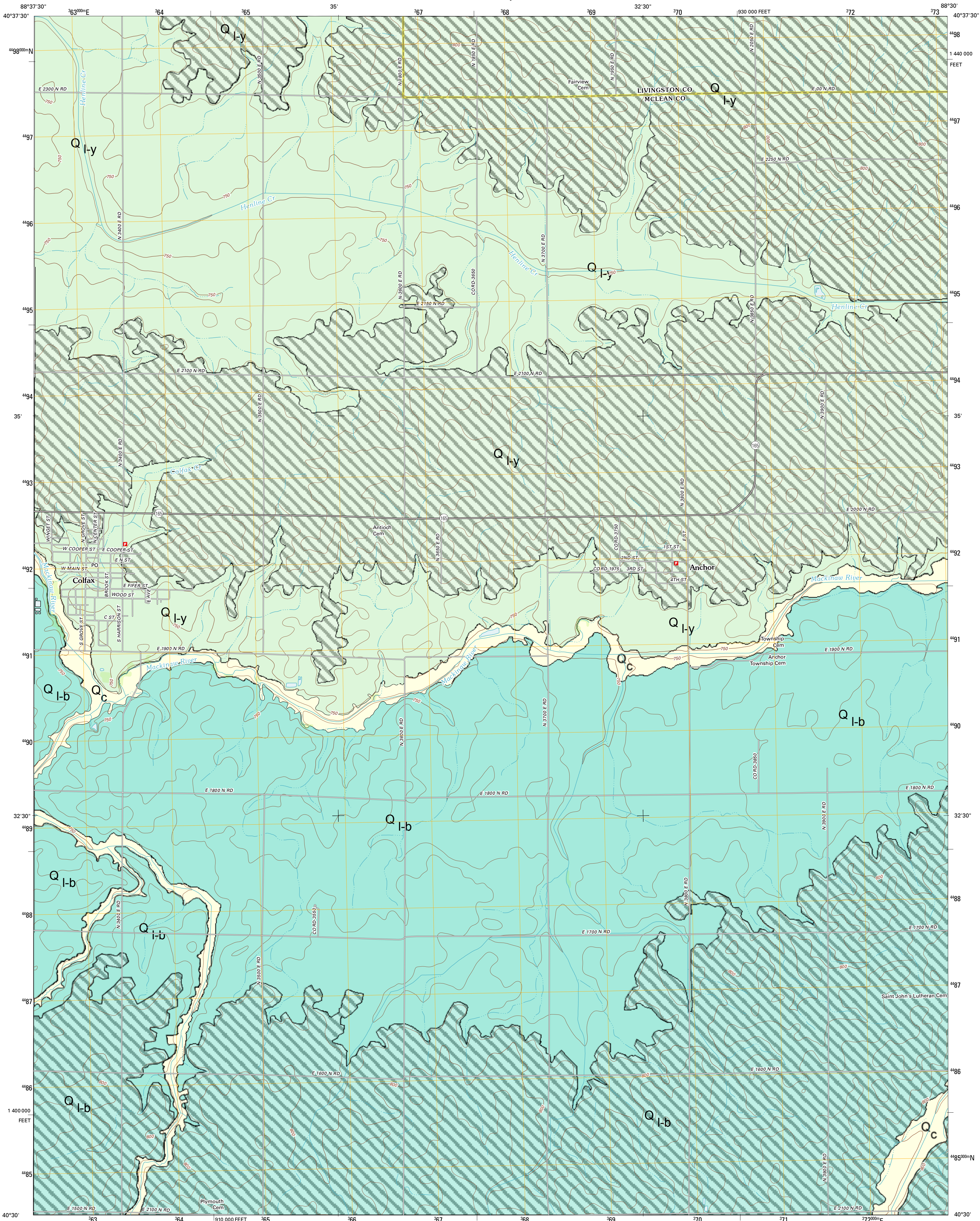




U.S. DEPARTMENT OF THE INTERIOR
U. S. GEOLOGICAL SURVEY

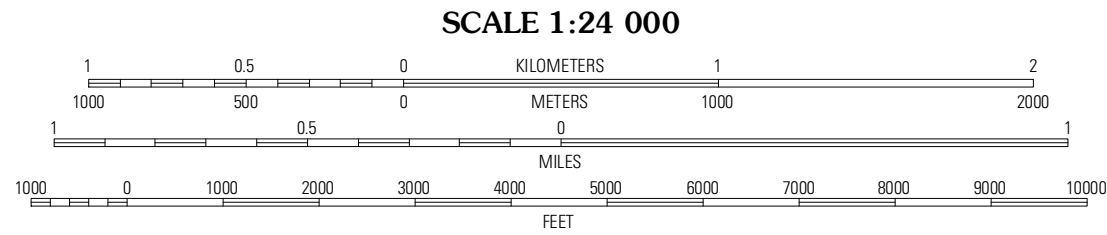
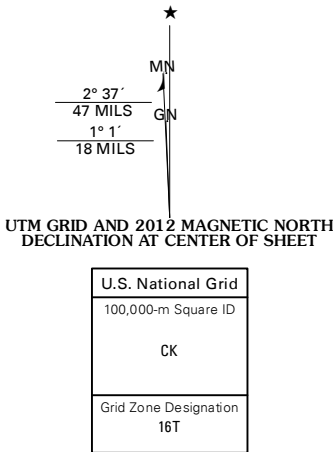


COLFAX QUADRANGLE
ILLINOIS
7.5-MINUTE SERIES

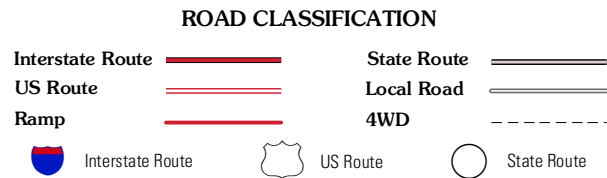
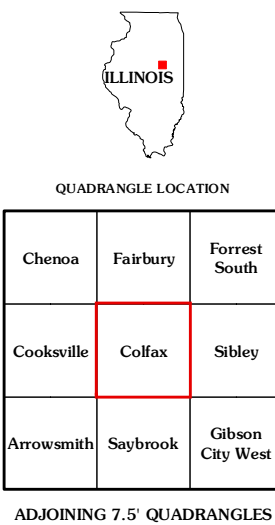


Produced by the United States Geological Survey
North American Datum of 1983 (NAD83)
World Geodetic System of 1984 (WGS84) Projection and
1 000-meter grid: Universal Transverse Mercator, Zone 16T
10 000-foot ticks: Illinois Coordinate System of 1983 (east zone)

Imagery.....NAIP, August 2011
Roads.....©2006-2011, TomTom
Names.....GNS, 2011
Hydrography.....National Hydrography Dataset, 2011
Contours.....National Elevation Dataset, 2012
Boundaries.....Census, IBWC, IBC, USGS, 1972 - 2010



CONTOUR INTERVAL 10 FEET
NORTH AMERICAN VERTICAL DATUM OF 1988
This map was produced to conform with the
National Geospatial Program US Topo Product Standard, 2011.
A metadata file associated with this product is draft version 0.6.3



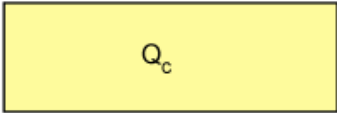
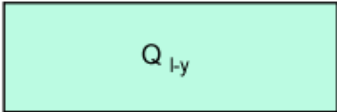
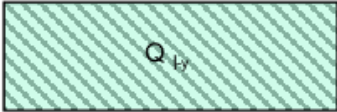
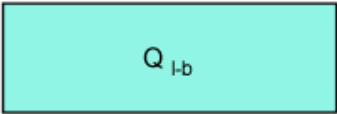
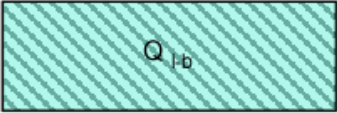
COLFAX, IL
2012

Surficial Geologic Map

Colfax Quadrangle, McLean County, Illinois

2015

Eileen L. Maxwell, Dr. Dave H. Malone, Dr. Eric W. Peterson, and Dr. Robert S. Nelson

Material		Lithographic Units and Interpretations	
		Quaternary Units	
		Hudson	
Brown to yellowish brown silt and clay; minor sand and gravel interbedded.		Cahokia Formation	
		Wisconsinan	
		Wedron Group	
		Lemont Formation	
Diamicton Units			
Clayey gray to silty clay till, finer matrix.		Yorkville Member (till)	
Clayey gray to silty clay, finer matrix, greater than 4% slope.		Yorkville Member (moraine till)	
Dark gray to light gray silt loam to loam, medium matrix.		Batestown Member (till)	
Dark gray to light gray silt loam to loam, medium matrix, greater than 4% slope.		Batestown Member (moraine till)	
Geological Contact	