

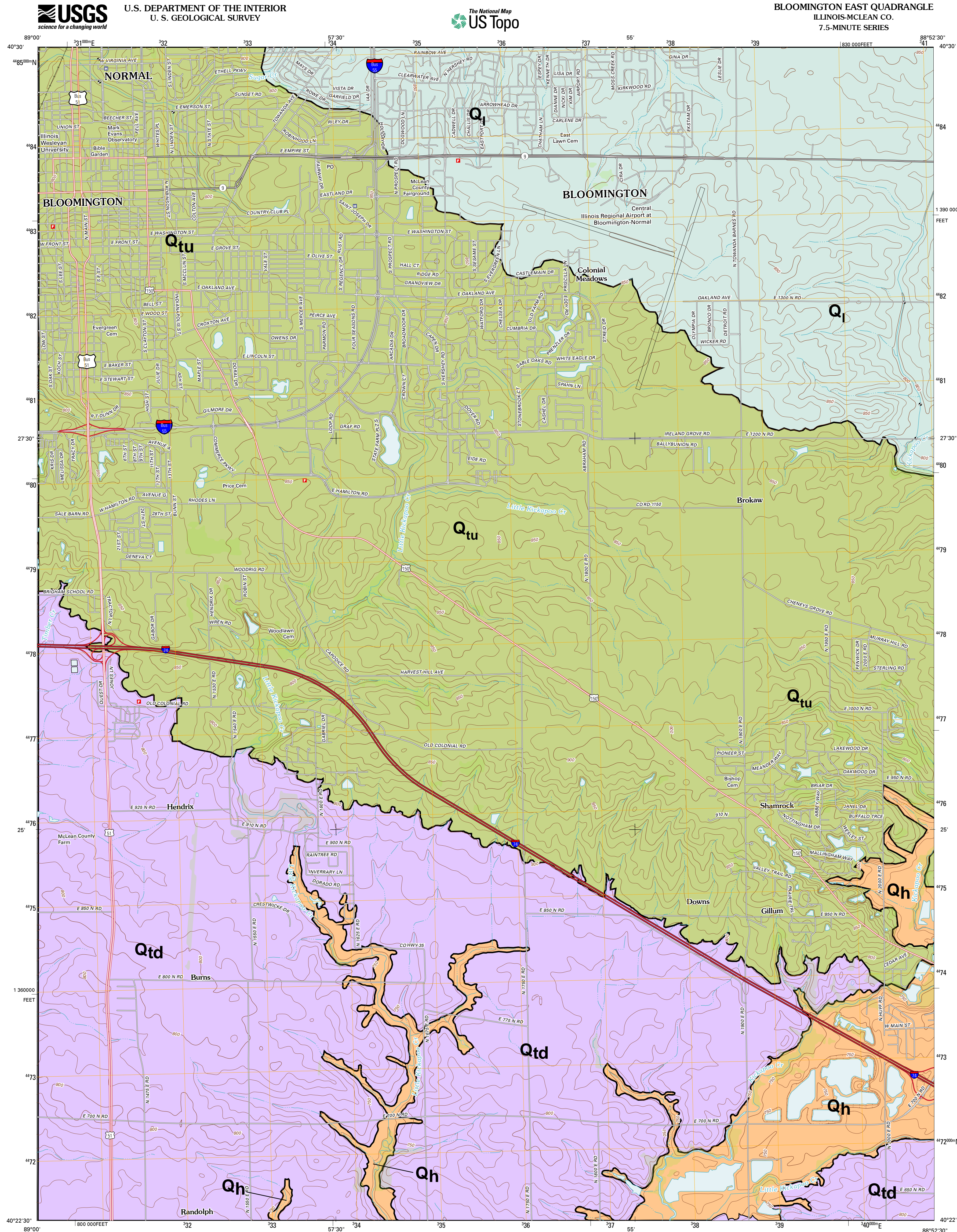
Surficial Geology Map of Bloomington East Quadrangle, McLean County Illinois

Jessica Ludwikowski, David H. Malone, Eric W. Peterson
 Illinois State University
 2016

QUATERNARY DEPOSITS

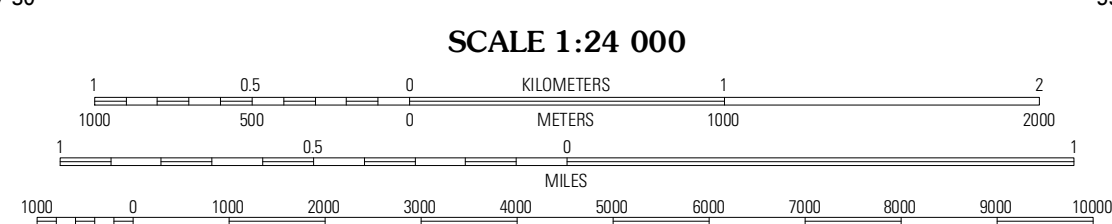
Description	Unit
	Henry Formation
	Q_h
Outwash, interbedded sand and gravel. Forms in terraces and upland surfaces in and adjacent to major valleys.	
	Lemont Formation
	Q_l
Fine to coarse grained gray diamict clay. Forms in the ground and terminal moraine of the Normal Moraine.	
	Tiskilwa Formation, Undivided
	Q_{tu}
Fine grained gray diamict clay. Forms in ground and terminal of Bloomington Moraine.	
	Tiskilwa Formation, Delavan Member
	Q_{td}
Medium grained red to gray diamict clay. Forms in ground moraine south of Bloomington Moraine.	
— Geologic Contact	

The surficial geology was mapped utilizing the following data:
 SSURGO (Soil Survey Geographic Database) from the USDA-NRCS
 DTM (Digital Terrain Model) derived from LIDAR from the Illinois State Geologic Survey
 Well log data from the Illinois State Geologic Survey



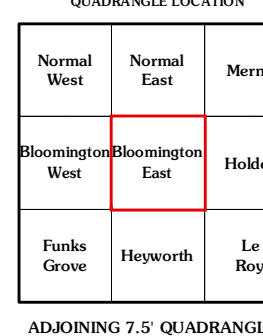
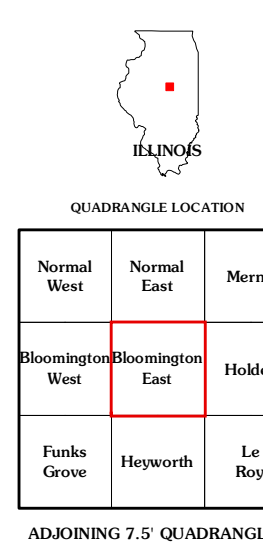
Produced by the United States Geological Survey
 North American Datum of 1983 (NAD83)
 World Geodetic System of 1984 (WGS84). Projection and
 1 000-meter grid: Universal Transverse Mercator, Zone 16T
 10 000-foot ticks: Illinois Coordinate System of 1983 (east zone)

UTM GRID AND 2012 MAGNETIC NORTH
 DECLINATION AT CENTER OF SHEET



CONTOUR INTERVAL 10 FEET
 NORTH AMERICAN VERTICAL DATUM OF 1988

This map was produced to conform with the
 National Geospatial Program US Topo Product Standard, 2011.
 A metadata file associated with this product is draft version 0.6.3



BLOOMINGTON EAST, IL
 2012



Department of Geography-Geology
 Illinois State University
 Campus Box 4400
 Normal, IL 61790-4400