

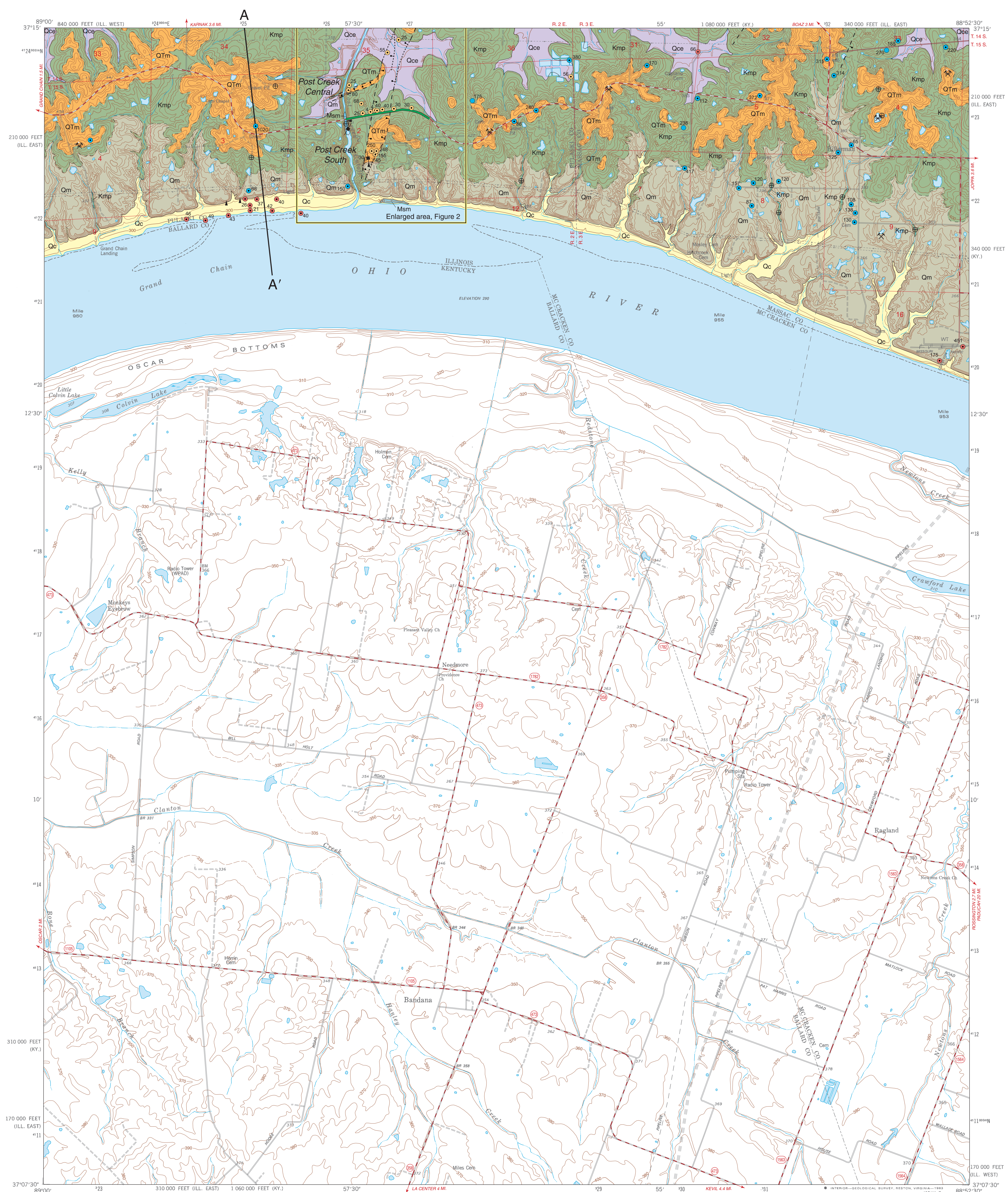
GEOLOGY OF BANDANA QUADRANGLE

PULASKI AND MASSAC COUNTIES, ILLINOIS

Illinois Department of Natural Resources
ILLINOIS STATE GEOLOGICAL SURVEY
William W. Shilts, Chief

W. John Nelson
2007

Illinois Geologic Quadrangle Map
IGQ Bandana-G



EXPLANATION			
Quaternary	Qc	Cahokia Formation	Holocene
	Qce	Cahokia and Equality Formations	
Tertiary	Om	Metropolis Formation	Pleistocene
	OTm	Mounds Gravel	
Cretaceous	Unconformity	McNairy and Post Creek Formations	Upper Cretaceous
	Unconformity	Salem Limestone	
Mississippian	Msm	Salem Limestone	

Note: Quaternary loess deposits comprising the Peoria, Roxana, and Loveland Sills cover nearly all upland areas to depths as great as 40 feet. These units are not shown on the geologic map.

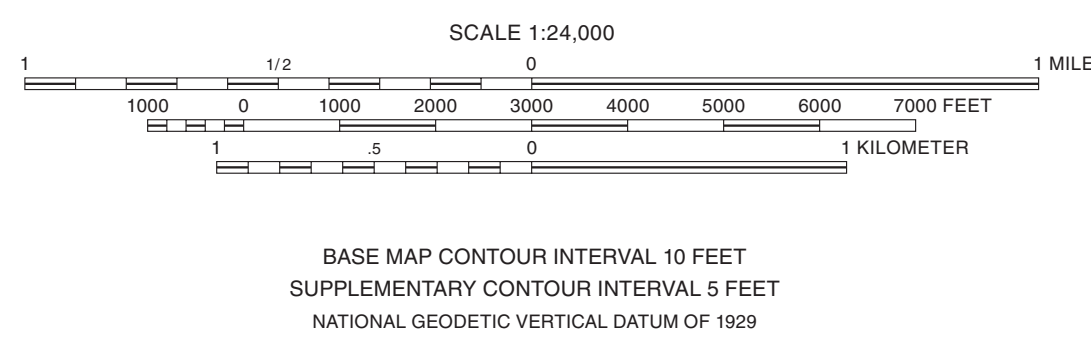
Symbols

- ⊕ Horizontal bedding
 - 45 Strike and dip of bedding; number indicates degree of dip
 - ⊥ Vertical joints or fractures
 - ▲ Outcrop of special note, shown where unit or contact was well exposed during mapping
 - ⊗ Active pit or quarry
 - ⊗ Abandoned pit or quarry
- ### Drill Holes
- from which subsurface data were obtained
- Stratigraphic boring
 - Water well
 - Engineering boring
 - Numeric label indicates total depth of boring in feet. Dot indicates location accurate within 100 feet.
- ### Line Symbols
- dashed where inferred, dotted where concealed
- Contact
 - Normal fault; bar and ball on downthrown side
 - Line of seismic reflection profile
 - A—A' Line of cross section

Base map compiled by Illinois State Geological Survey from digital data provided by the United States Geological Survey. Topography of Illinois area by photogrammetric methods from aerial photographs taken 1965. Revised from aerial photographs taken 1978. Map edited 1982.

North American Datum of 1983 (NAD 83)
Projection: Transverse Mercator
10,000-foot ticks: Illinois State Plane Coordinate system, east and west zones zone (Transverse Mercator)
1,000-meter ticks: Universal Transverse Mercator grid system, zone 16

Recommended citation:
Nelson, W.J., 2007. Geology of Bandana Quadrangle, Pulaski and Massac Counties, Illinois. Illinois State Geological Survey, Illinois Geologic Quadrangle Map, IGQ Bandana-G, 1:24,000, report, 8 p.



Released by the authority of the State of Illinois: 2007

Geology based on field work and data analysis by J. Nelson and J. Hintz, 1999-2000.

Digital cartography by J. Domier, D. Byers, J. Magnotta, M. Bentley, and S. Geegan, Illinois State Geological Survey.

The Illinois State Geological Survey, the Illinois Department of Natural Resources, and the State of Illinois make no guarantee, expressed or implied, regarding the correctness of the interpretations presented in this document and accept no liability for the consequences of decisions made by others on the basis of the information presented here. The geologic interpretations are based on data that may vary with respect to accuracy of geographic location, the type and quantity of data available at each location, and the scientific and technical qualifications of the data sources. Maps or cross sections in this document are not meant to be enlarged.

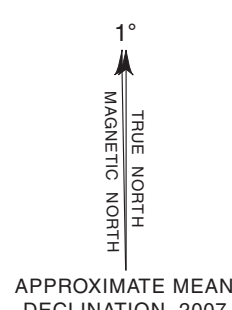


For more information contact:
Illinois State Geological Survey
615 East Peabody Drive
Champaign, Illinois 61820-6964
(217) 244-2414
http://www.isgs.uiuc.edu



ADJOINING QUADRANGLES		
1	2	3
4	5	
6	7	8

1 Cypress
2 Karnak
3 Mernmet
4 Clmsted
5 Joppa
6 Barlow
7 La Center
8 Heath



ROAD CLASSIFICATION	
Primary highway, hard surface	Light-duty road, hard or improved surface
Secondary highway, hard surface	Unimproved road
	State Route