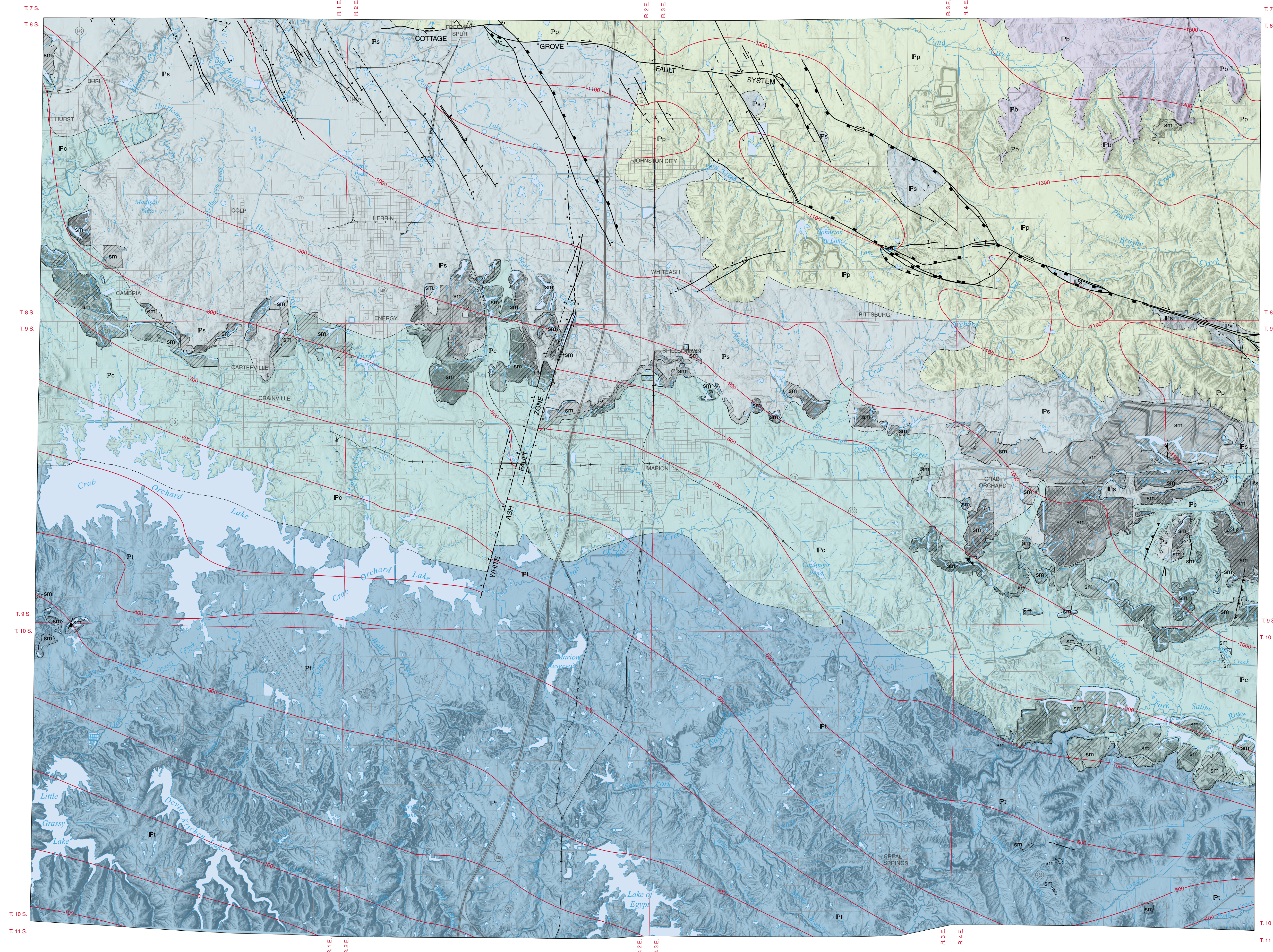


BEDROCK GEOLOGY OF WILLIAMSON COUNTY, ILLINOIS

Prairie Research Institute
ILLINOIS STATE GEOLOGICAL SURVEY

W. John Nelson
2020

STATEMAP Williamson County-BG

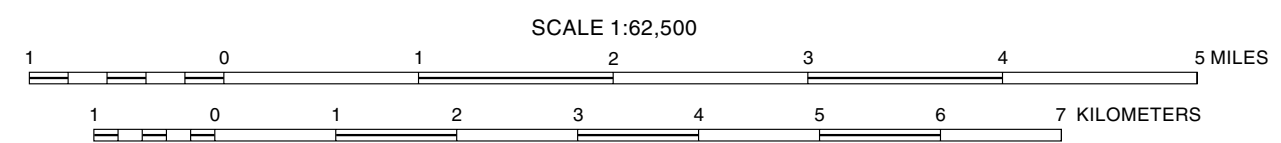


System	EXPLANATION	Series
	Surface coal mine	
Pennsylvanian	Bond Formation	Missourian
	Patoka Formation	
	Shelburn Formation	
	Carbondale Formation	Desmoinesian
	Tradewater Formation	Atokan to Morrowan

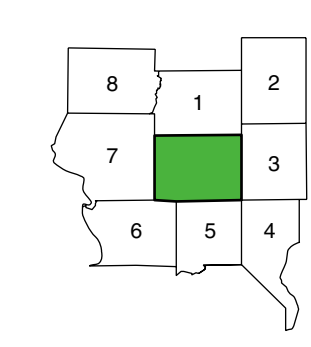
- Line Symbols**
dashed where inferred, dotted where concealed
- Contact, approximate
 - Normal fault: bar and ball on downthrown side
 - Fault, direction of throw unknown
 - Thrust fault, triangles on upthrown block
 - Reverse fault, rectangles on upthrown block
 - Strike-slip fault, right lateral
 - Elevation of base of Negil Creek (lower Kinkaid) Limestone, contour interval 100 feet

ROAD CLASSIFICATION

Interstate Route	State Route
U.S. Route	Local road



© 2020 University of Illinois Board of Trustees. All rights reserved.
For permission information, contact the Illinois State Geological Survey.



- ADJACENT COUNTIES**
- 1 Franklin
 - 2 Hamilton
 - 3 Saline
 - 4 Pope
 - 5 Johnson
 - 6 Union
 - 7 Jackson
 - 8 Perry

2 1/2°
MAGNETIC DECLINATION
APPROXIMATE MEAN
DECLINATION, 2020

Base map compiled by Illinois State Geological Survey from digital data (2019 TIGERLine Shapefiles) provided by the United States Census Bureau. Hillshade from 2011 LIDAR elevation data. Transverse Mercator Projection, North American Datum of 1983.

Geology based on field work and data compilation by W. John Nelson, 2001-2003 and 2019-2020. Digital cartography by E. Bunske, A. Myers, and J. Obrad, Illinois State Geological Survey.

This geologic map was funded in part by the USGS National Cooperative Geologic Mapping Program under StateMap award number G19AC00310, 2019. The views and conclusions contained in this document are those of the authors and should not be interpreted as necessarily representing the official policies, either expressed or implied, of the U.S. Government.

This map has not undergone the formal Illinois Geologic Quadrangle map review process. Whether or when this map will be formally reviewed and published depends on the resources and priorities of the ISGS.

The Illinois State Geological Survey and the University of Illinois make no guarantee, expressed or implied, regarding the correctness of the interpretations presented in this document and accept no liability for the consequences of decisions made by others on the basis of the information presented here. The geologic interpretations are based on data that may vary with respect to the accuracy of the geographic location, the type and quantity of data available at each location, and the scientific and technical qualifications of the data sources. Maps or cross sections in this document are not meant to be enlarged.

Recommended citation:
Nelson, W.J., 2020, Bedrock Geology of Williamson County, Illinois: Illinois State Geological Survey, STATEMAP Williamson County-BG, 1 sheet, 1:62,500; report, 63 p.; 1 pt.

ILLINOIS
Illinois State Geological Survey
Prairie Research Institute
Illinois State Geological Survey
615 East Peabody Drive
Champaign, Illinois 61820-6918
(217) 244-2414
http://www.isgs.illinois.edu