

# SURFACE TOPOGRAPHY OF TAZEWELL COUNTY, ILLINOIS

Compiled by Patrick D. Johnstone and Christopher S. McGarry  
 Additional digital cartography by Jennifer Wolters and Craig Gain

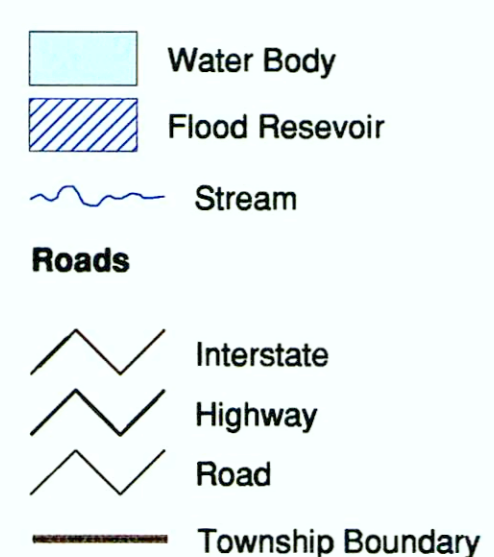
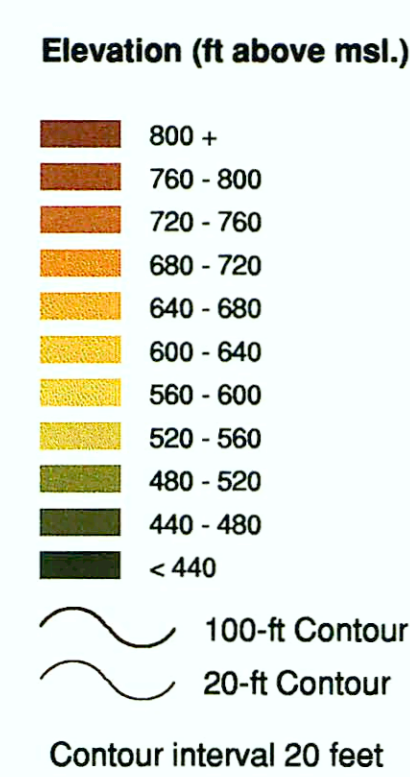
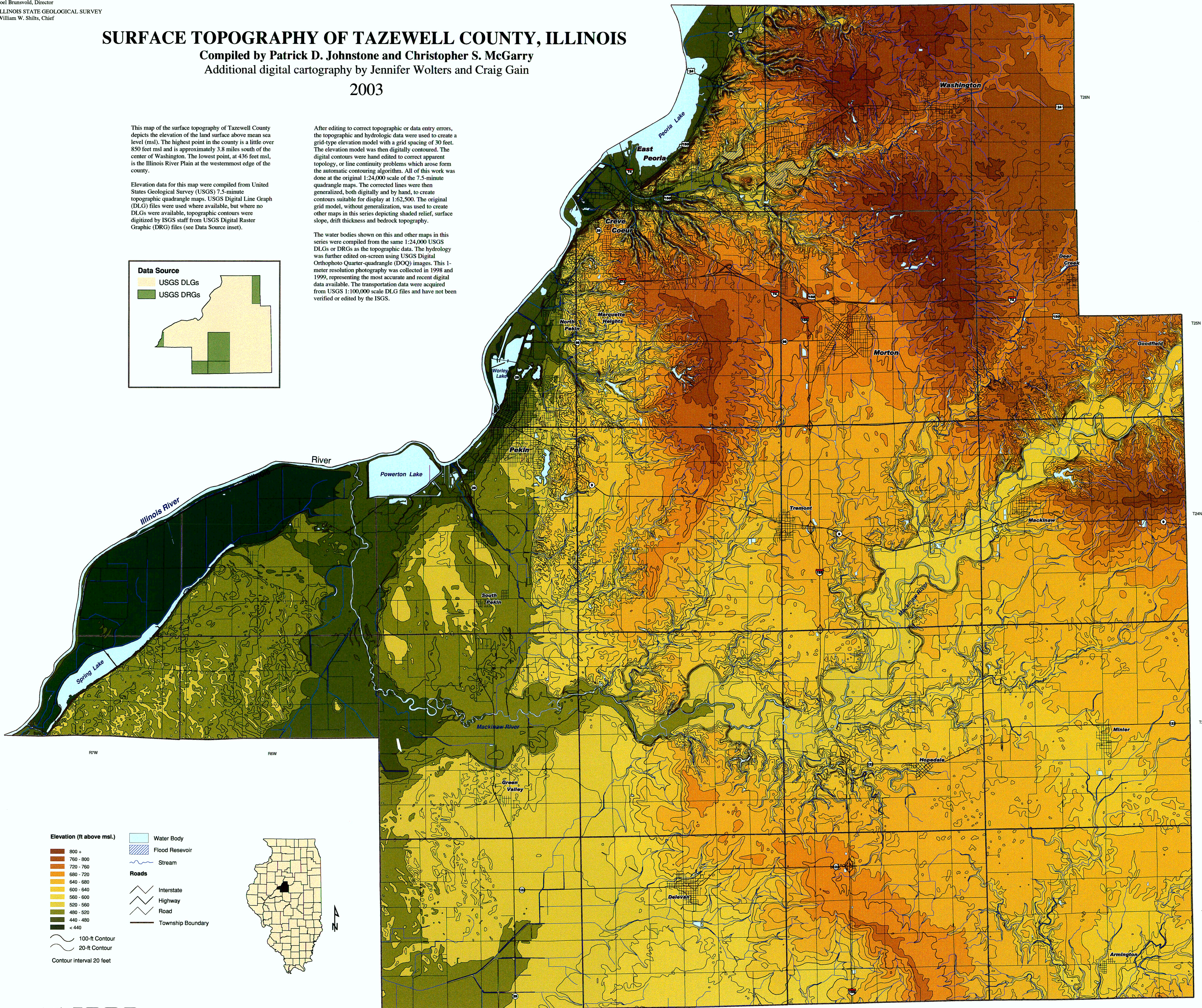
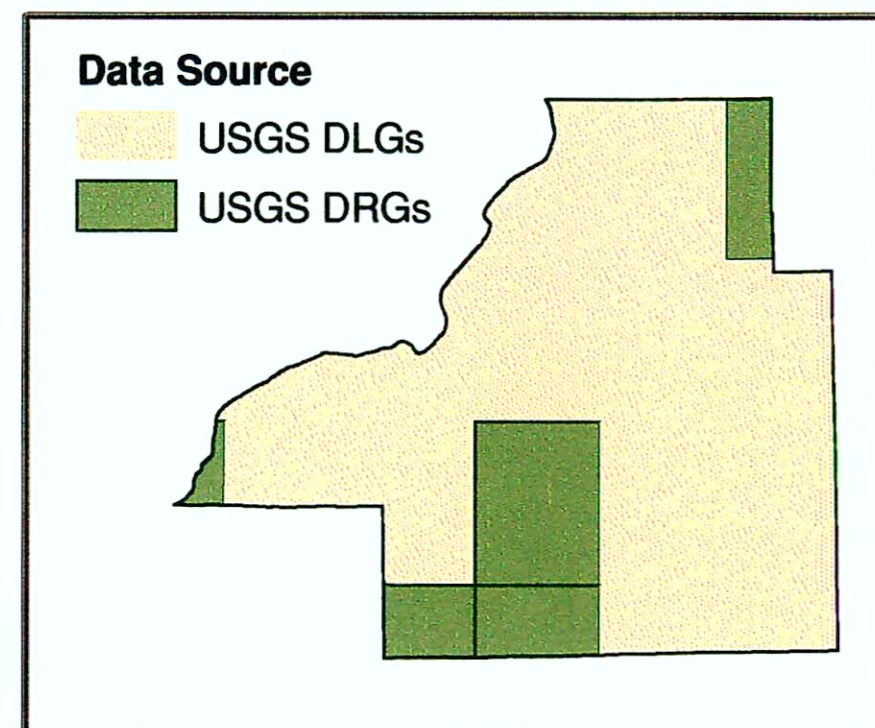
2003

This map of the surface topography of Tazewell County depicts the elevation of the land surface above mean sea level (msl). The highest point in the county is a little over 850 feet msl and is approximately 3.8 miles south of the center of Washington. The lowest point, at 436 feet msl, is the Illinois River Plain at the westernmost edge of the county.

Elevation data for this map were compiled from United States Geological Survey (USGS) 7.5-minute topographic quadrangle maps. USGS Digital Line Graph (DLG) files were used where available, but where no DLGs were available, topographic contours were digitized by ISGS staff from USGS Digital Raster Graphic (DRG) files (see Data Source inset).

After editing to correct topographic or data entry errors, the topographic and hydrologic data were used to create a grid-type elevation model with a grid spacing of 30 feet. The elevation model was then digitally contoured. The digital contours were hand edited to correct apparent topology, or line continuity problems which arose from the automatic contouring algorithm. All of this work was done at the original 1:24,000 scale of the 7.5-minute quadrangle maps. The corrected lines were then generalized, both digitally and by hand, to create contours suitable for display at 1:62,500. The original grid model, without generalization, was used to create other maps in this series depicting shaded relief, surface slope, drift thickness and bedrock topography.

The water bodies shown on this and other maps in this series were compiled from the same 1:24,000 USGS DLGs or DRGs as the topographic data. The hydrology was further edited on-screen using USGS Digital Orthophoto Quarter-quadrangle (DOQ) images. This 1-meter resolution photography was collected in 1998 and 1999, representing the most accurate and recent digital data available. The transportation data were acquired from USGS 1:100,000 scale DLG files and have not been verified or edited by the ISGS.

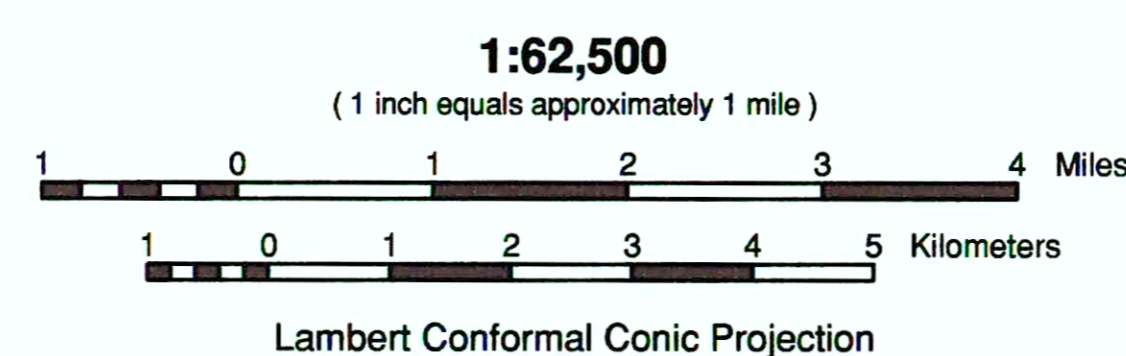


FOR ADDITIONAL INFORMATION CONTACT:

Illinois State Geological Survey  
 Natural Resources Building  
 615 East Peabody Drive  
 Champaign, Illinois 61820

(217) 333-4747  
<http://www.isgs.uiuc.edu>

Released by authority of the State of Illinois: 2003



This document has been carefully reviewed and edited and meets the scientific/technical standards of the Illinois State Geological Survey. It is suited to the purposes and uses intended by its authors and presents reasonable interpretations of the surface topography of the area based on the data then available. The interpretations are based on data that may vary with respect to accuracy of geographic location, the type and quantity of data available at each location, and the scientific/technical qualifications of the data sources. This map is not meant to be enlarged. Enlarging the scale of a published map, by whatever means, does not increase the inherent accuracy of the information and scientific interpretations it portrays.

This document provides a conceptual model of the surface topography of the area on which further work can be based. This map may be used to screen the region for potentially suitable sites for a variety of purposes, but use of this map for such screening does not eliminate the need for detailed studies to fully understand the surface topography of a specific site. The Illinois State Geological Survey, the Illinois Department of Natural Resources, and the State of Illinois make no guarantee, expressed or implied, regarding the correctness of the interpretations presented in this document and accept no liability for the consequences of decisions made by others on the basis of the information presented here.