

# SINKHOLE DISTRIBUTION AND ASSOCIATED KARST FEATURES OF MONROE COUNTY, ILLINOIS

Samuel V. Panno and Donald E. Luman  
2012

Illinois County Geologic Map  
ICGM Monroe-SD

Prairie Research Institute  
ILLINOIS STATE GEOLOGICAL SURVEY

## Bedrock Geology

- Pennsylvanian**
- Pt Tradewater Formation
- Mississippian**
- Mpl Lower Pope Group
  - Msg Ste Genevieve Limestone
  - Msl St. Louis Limestone
  - Mws Warsaw Formation and Salem Limestone
  - Mbk Meppen Limestone, Fern Glen Formation, Burlington-Keokuk Limestone
- Ordovician**
- Om Maquoketa Shale Group
  - Ok Kimmswick Limestone and Decorah Formation
  - Op Platteville Group
  - Oa Ancestral Group

## Karst Features

- Sinkhole
- Spring

## Structures

- dashed where inferred
- Normal fault
  - Anticline
  - Anticline plunging
  - Asymmetric anticline
  - Syncline
  - Asymmetric syncline
  - Monocline

## Road Classification

- Interstate Route
- U.S. Route
- State Route
- Other paved roads

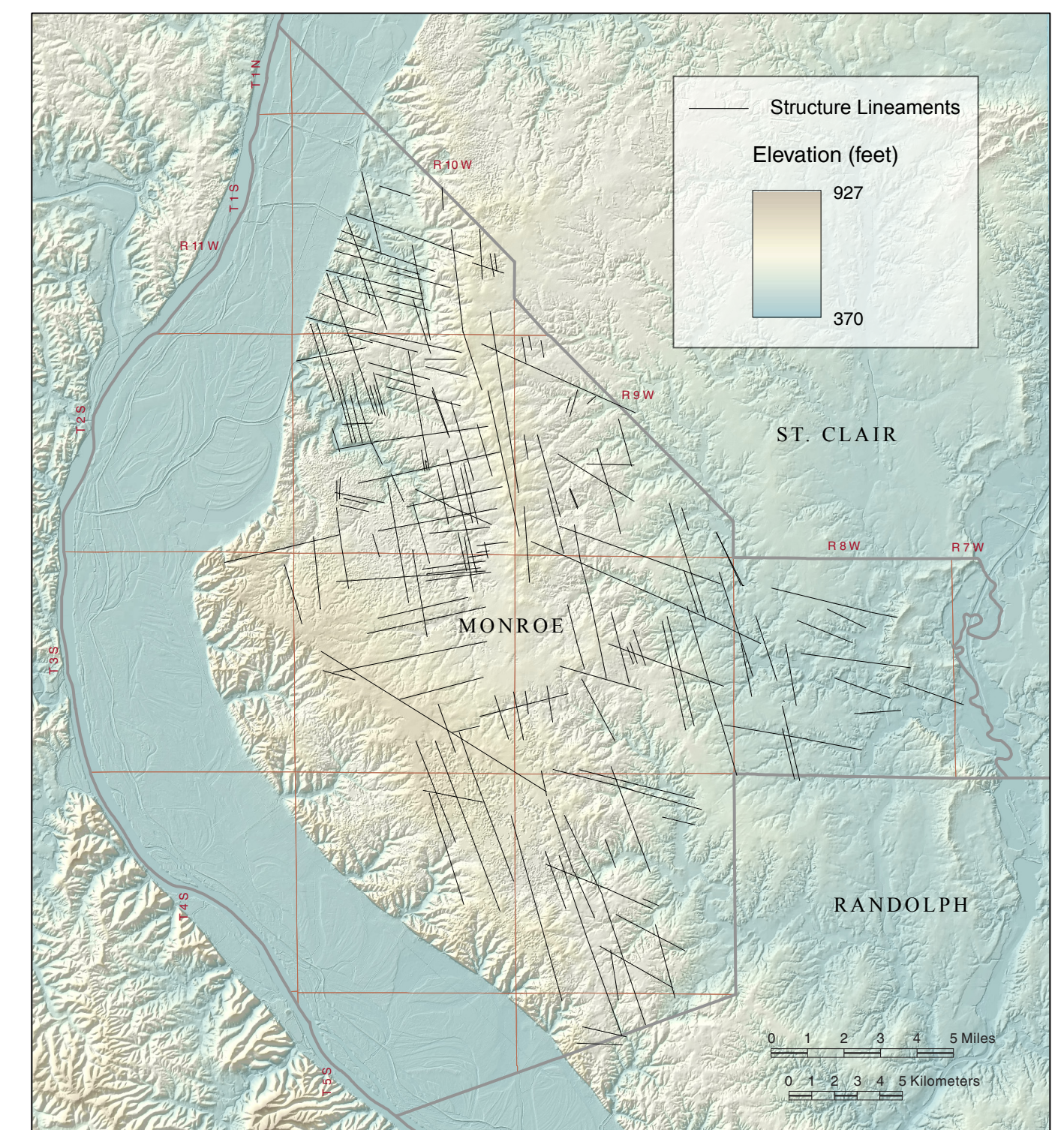


Figure M1 Structure lineaments of Monroe County.

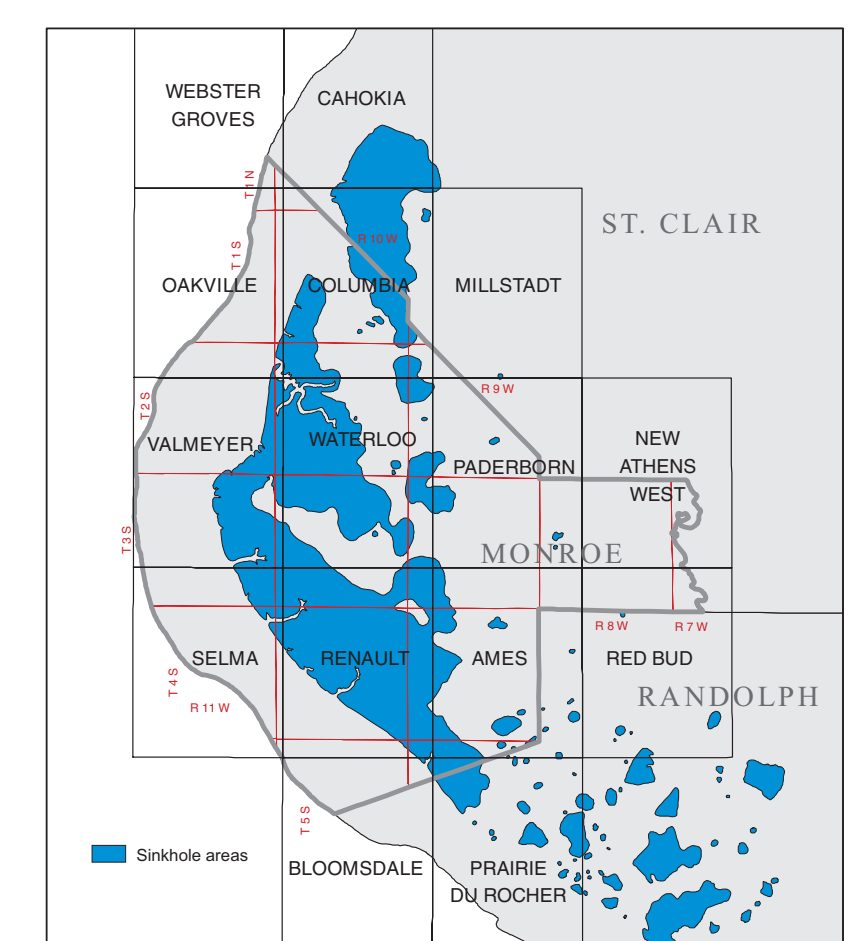
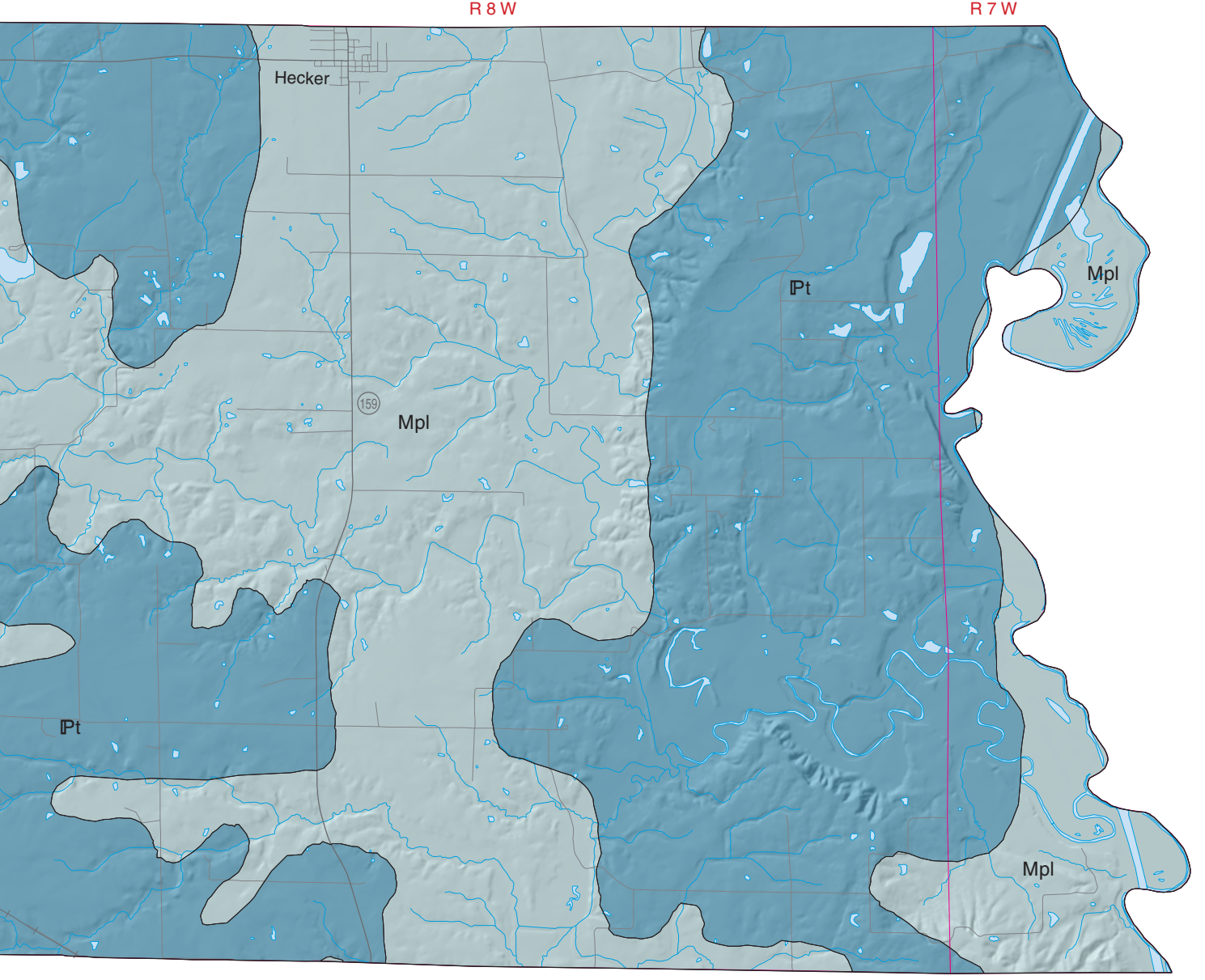
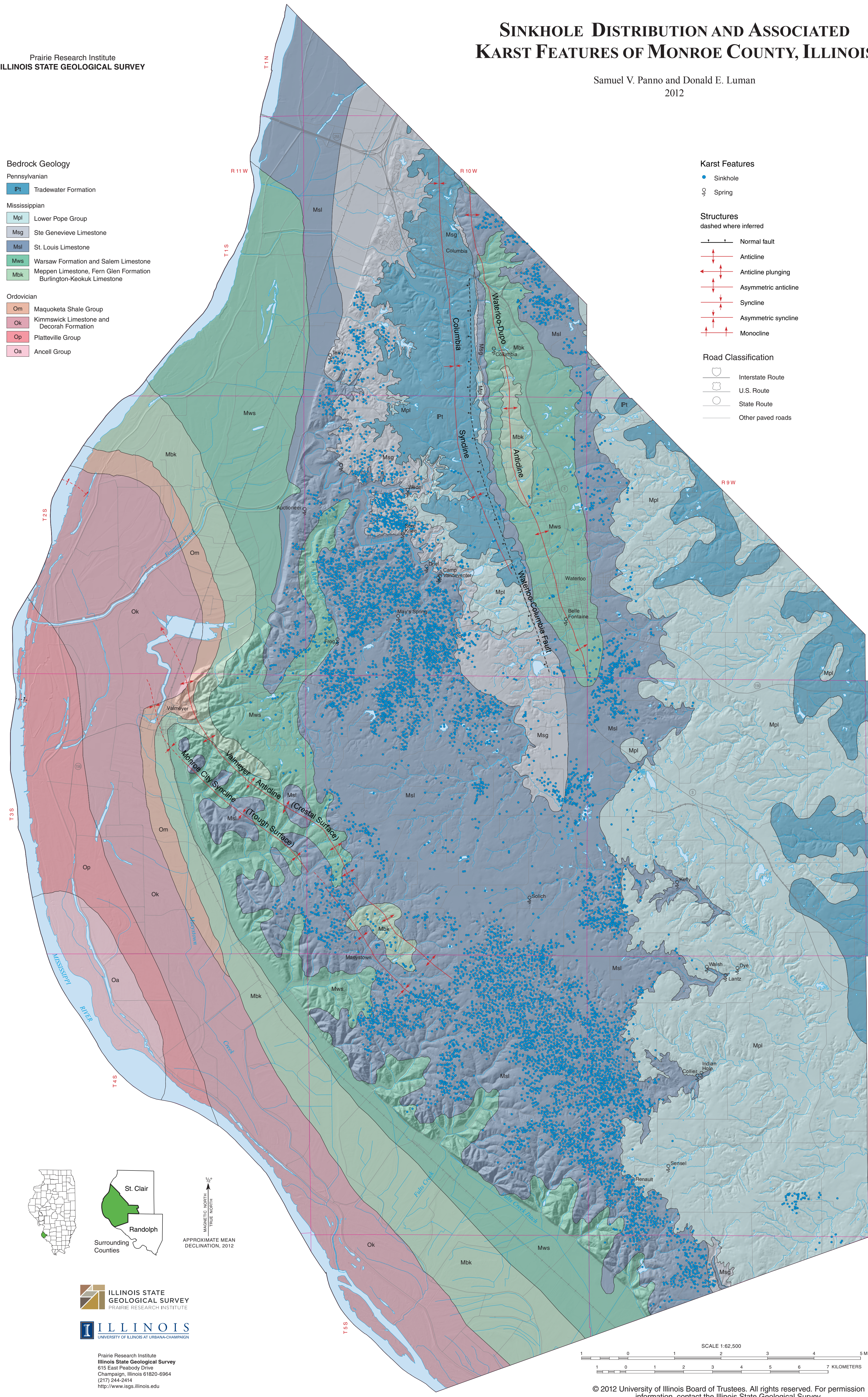


Figure M2 USGS 7.5-minute quadrangles of Monroe County, Illinois. The major sinkhole areas are shown, and the highest concentration of sinkhole features are in Monroe County within the Waterloo and Renault quadrangles. Modified from Weibel and Panno (1997).

Karst features located using photointerpretation by Samuel V. Panno and Donald E. Luman, 2010-2011. Bedrock geology from Kotata, D.F. (compiler), 2005. Bedrock geology of Illinois: Illinois State Geological Survey, Illinois Map 14, 2 sheets, 1:500,000.

Cartography by Jane E. Johnson-Domier and Donald E. Luman.

Base map compiled by Illinois State Geological Survey from digital data (2009 TIGER/Line Shapefiles) provided by the United States Census Bureau. Digital elevation model and shaded relief image from digital data provided by the USGS National Elevation Dataset. Transverse Mercator Projection, UTM grid zone 15, North American Datum of 1983.

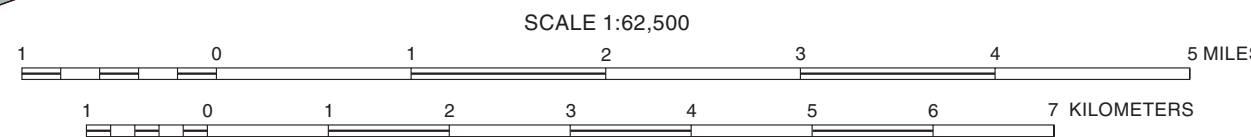
The Illinois State Geological Survey and the University of Illinois make no guarantee, expressed or implied, regarding the correctness of the interpretations presented in this document and accept no liability for the consequences of decisions made by others on the basis of the information presented here. The geologic interpretations are based on data that may vary with respect to accuracy of geographic location, the type and quantity of data available at each location, and the scientific and technical qualifications of the data sources. This map is not meant to be enlarged.

**Recommended citation:**  
Panno, S.V., and D. E. Luman, 2012. Sinkhole Distribution and Associated Karst Features of Monroe County, Illinois: Illinois State Geological Survey, Illinois County Geologic Map, ICGM Monroe County-SD, 1:62,500, report, 12 p.



ILLINOIS STATE GEOLOGICAL SURVEY  
PRAIRIE RESEARCH INSTITUTE  
ILLINOIS  
UNIVERSITY OF ILLINOIS AT URBANA-CHAMPAIGN

Prairie Research Institute  
Illinois State Geological Survey  
615 East Peabody Drive  
Champaign, Illinois 61820-6964  
(217) 244-2414  
http://www.isgs.illinois.edu



© 2012 University of Illinois Board of Trustees. All rights reserved. For permission information, contact the Illinois State Geological Survey.