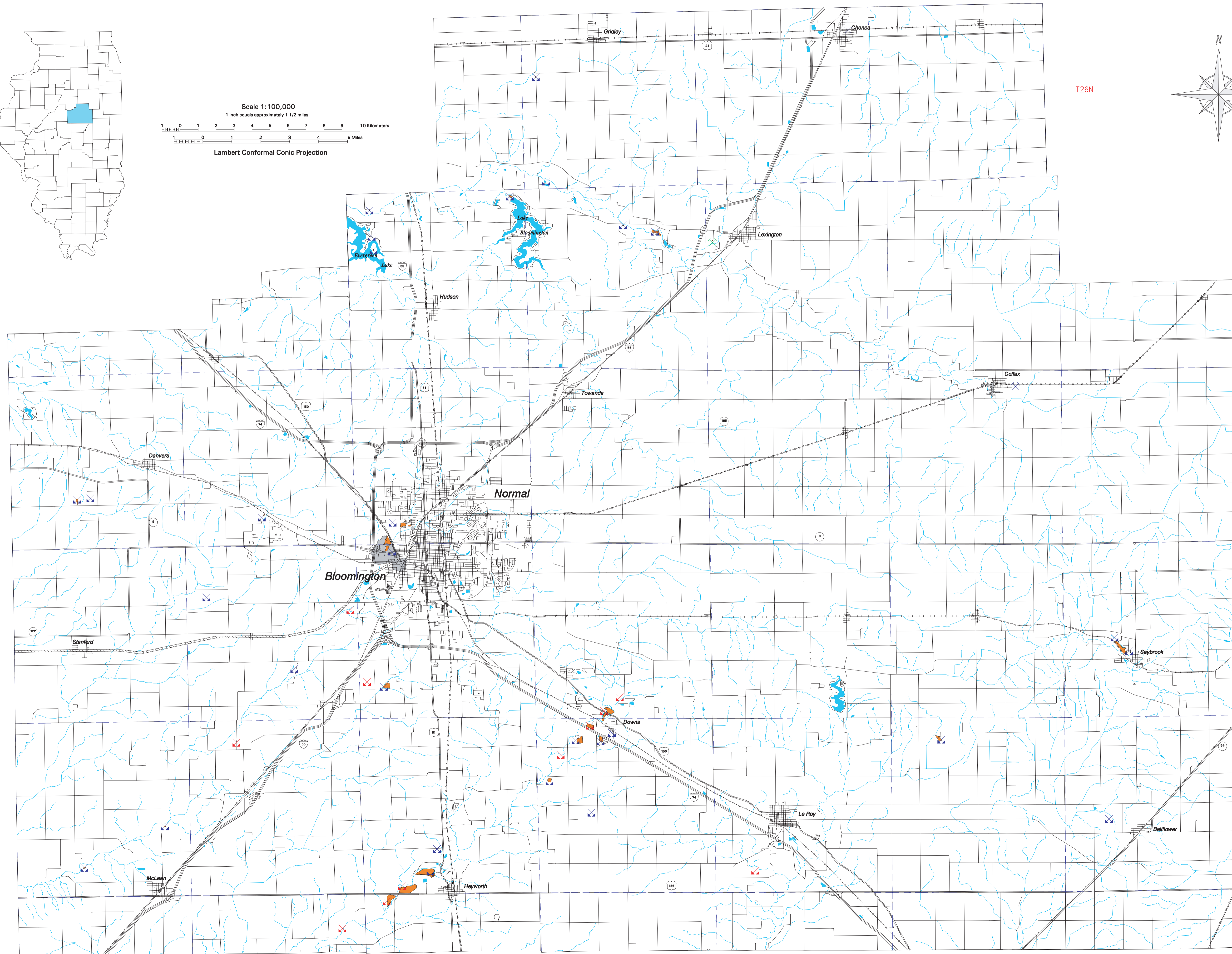
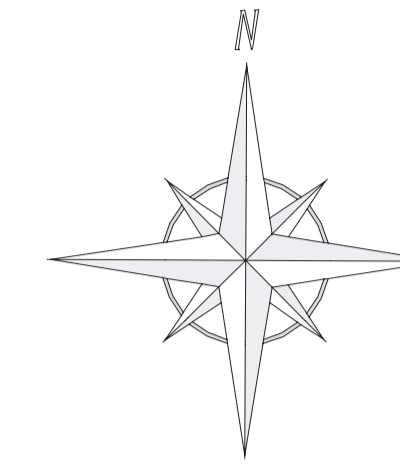
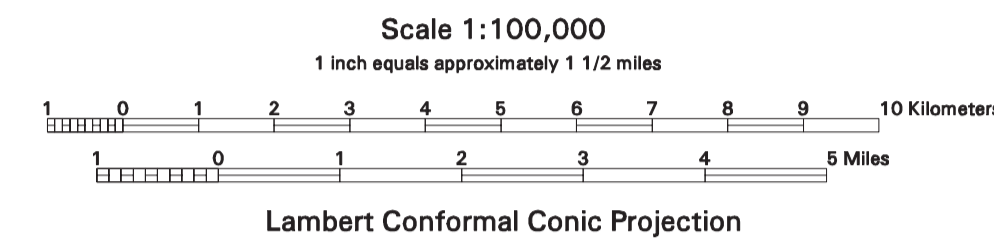
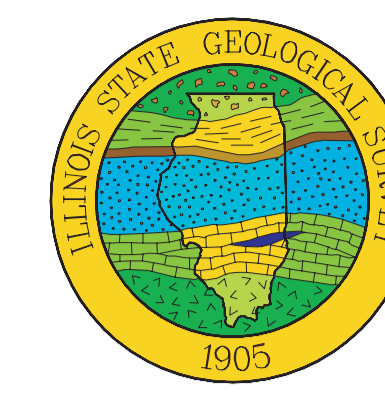


# Extraction Operations in McLean County, Illinois

compiled by Melisa M. McLean, Maureen D. Kelly and Matthew H. Riggs

1997



- Sand and Gravel Pit (Active)
- Sand and Gravel Pit (Inactive)
- Coal Mine Shaft (Inactive)
- Quarry (Inactive)
- Sand and Gravel Pit Outline
- Underground Coal Mine
- Water Bodies
- Streams
- Township Line
- Interstate Highway
- US Highway
- State Highway
- Other Roads
- Railroad
- Abandoned Railway
- Hiking/Biking Path

Most of the sand and gravel mined in McLean County is found as alluvial deposits along streams (the Cahokia Alluvium) or surficial, outwash deposits (Mackinaw Member, Henry Formation). See Samson and Masters (1995) for more information on sand and gravel mining operations in the county. The outlines of sand and gravel pits were digitized as shown on the U.S. Geological Survey (USGS) 7.5-minute Topographic maps. Information on pit locations from the Illinois Non-Coal Mine Site Inventory (Sherrill et al., 1991) and an unpublished ISGS report on mineral resources in McLean County (Kempton, 1971) was used to verify and supplement the information from the topographic maps. The information about the locations of sand and gravel pits is incomplete and the locations shown have not been field verified. Inactive pits that are not shown on this map are likely to exist in the county, mainly along stream channels.

Coal was mined in McLean County for the Pennsylvanian-age Danville, Springfield and Colchester Coals of the Carbonate Formation. All of the coal mines are now inactive. Shaft locations and the extent to underground coal mining operations shown were obtained from digital data of active and abandoned mines (ISGS, 1993) and from Illinois State University Professor Robert S. Nelson. The extent of underground mining was not field verified.

Public Land Survey boundaries were digitized from USGS 7.5-minute topographic maps. The slight skewness in the orientation of the map is due to the map projection (Lambert conformal conic). Public Land Survey Lines in this part of the state do not run true north-south or east-west. Roads and railroads were obtained from USGS (1985) 1:100,000 digital line graph data.

This map is one of several developed to assist McLean County in establishing a geologically based process for landfill site screening. Information on the locations of sand and gravel pits and coal mines was used in an aquifer sensitivity model of the county.

#### References Cited

- Illinois State Geological Survey, 1993. Illinois Coal Mine Maps and Directories. In Publications of the Illinois State Geological Survey, p. 103.
- Kempton, J.P., 1971. Geology and Mineral Resources of McLean County - A Preliminary Report for Planning. Illinois State Geological Survey Miscellaneous Manuscript 84.
- Samson, I.E. and J.M. Masters, (in press). Directory of Illinois Mineral Producers 1995. Illinois State Geological Survey Illinois Minerals Report.
- Sherrill, J. S., D. K. Davie, and J.R. Nawrot, 1991. Illinois Non-coal Mine Site Inventory: Cooperative Wildlife Research Laboratory, Southern Illinois University, Carbondale.

#### Acknowledgments

The authors gratefully acknowledge the contributions to the development of this map made by John M. Masters, Robert S. Nelson and Colin G. Treworgy. E. Donald McKay was the principal investigator for this project. This project was funded in part by the Illinois Department of Commerce and Community Affairs, Bureau of Energy and Recycling, Springfield, Illinois.

T21N

T22N

T23N

T24N

T25N

T26N

R1W

R1E

R2E

R3E

R4E

R5E

R6E