

Land Cover of Carroll County, Illinois

Illinois State Geological Survey
William W. Shiels, Chief
Champaign

Compiled by Christopher S. McGarry
(from Luman, Joselyn, and Suloway 1996)

1997

State of Illinois
Department of Natural Resources

R2E R3E R4E R5E R6E R7E

Explanation

URBAN AND BUILT-UP LAND

- High Density (all or most of the surface cover is comprised of impervious material; industrial plants, urban centers)
- Medium Density (a significant proportion of the surface cover is comprised of impervious material, residential areas)
- Low Density (small amount of surface area comprised of impervious material mixed with other land cover such as Grassland, Woodland, etc.; subdivisions)

CROPLAND

- Row Crop (corn, soybeans, and other tilled crops)
- Small Grains (wheat, oats, etc.)

GRASSLAND

- Urban Grassland (parks, residential lawns, golf courses, cemeteries, and other open space)
- Rural Grassland (pastureland, grassland, waterways, etc.)

WOODED AND FORESTED LAND

- Deciduous: undifferentiated broadleaf deciduous, closed canopy
- Deciduous: undifferentiated broadleaf deciduous, open canopy
- Coniferous: undifferentiated

WETLAND

- Swamp
- Shallow Marsh/Wet Meadow
- Deep Marsh
- Forested Wetlands

OTHER

- Open Water
- Barren Land (e.g., quarries, sandy beaches, exposed soil surfaces, etc.)

- US Highway
- State Highway
- Other Roads

LAND COVER	TOTAL AREA (sq.mi)	PERCENT AREA
row crops	217.28	47.01
rural grasslands	132.67	28.70
deciduous forest, closed canopy	47.91	10.36
small grains	23.56	5.10
open water	22.20	4.80
forested wetlands	7.12	1.54
urban grasslands	2.78	0.60
deciduous forest, open canopy	2.54	0.55
low density built-up land	1.88	0.41
shallow marsh/wet meadow	1.30	0.28
swamp	0.90	0.19
medium density built-up land	0.62	0.13
high density built-up land	0.45	0.10
shallow water wetlands	0.46	0.10
coniferous forest	0.41	0.09
barren land	0.15	0.03

The Land Cover database was developed by the Illinois Natural History Survey and the Illinois State Geological Survey from satellite imagery acquired between April, 1991 and May, 1995. These data were provided by the federal Multi-Resolution Land Characteristics consortium via the National Biological Service Gap Analysis Program, by the North Central Forest Experiment Station of the US Forest Service, and by the State of Illinois.

Illinois Land Cover is a product of the Critical Trends Assessment Project (CTAP), an ongoing project within the Department of Natural Resources Office of Realty and Environmental Planning to assess the extent and condition of the state's ecosystems. Coordinated by the Division of Energy and Environmental Assessment, it is a multi-disciplinary effort involving the Scientific Surveys and other Natural Resource Agencies.

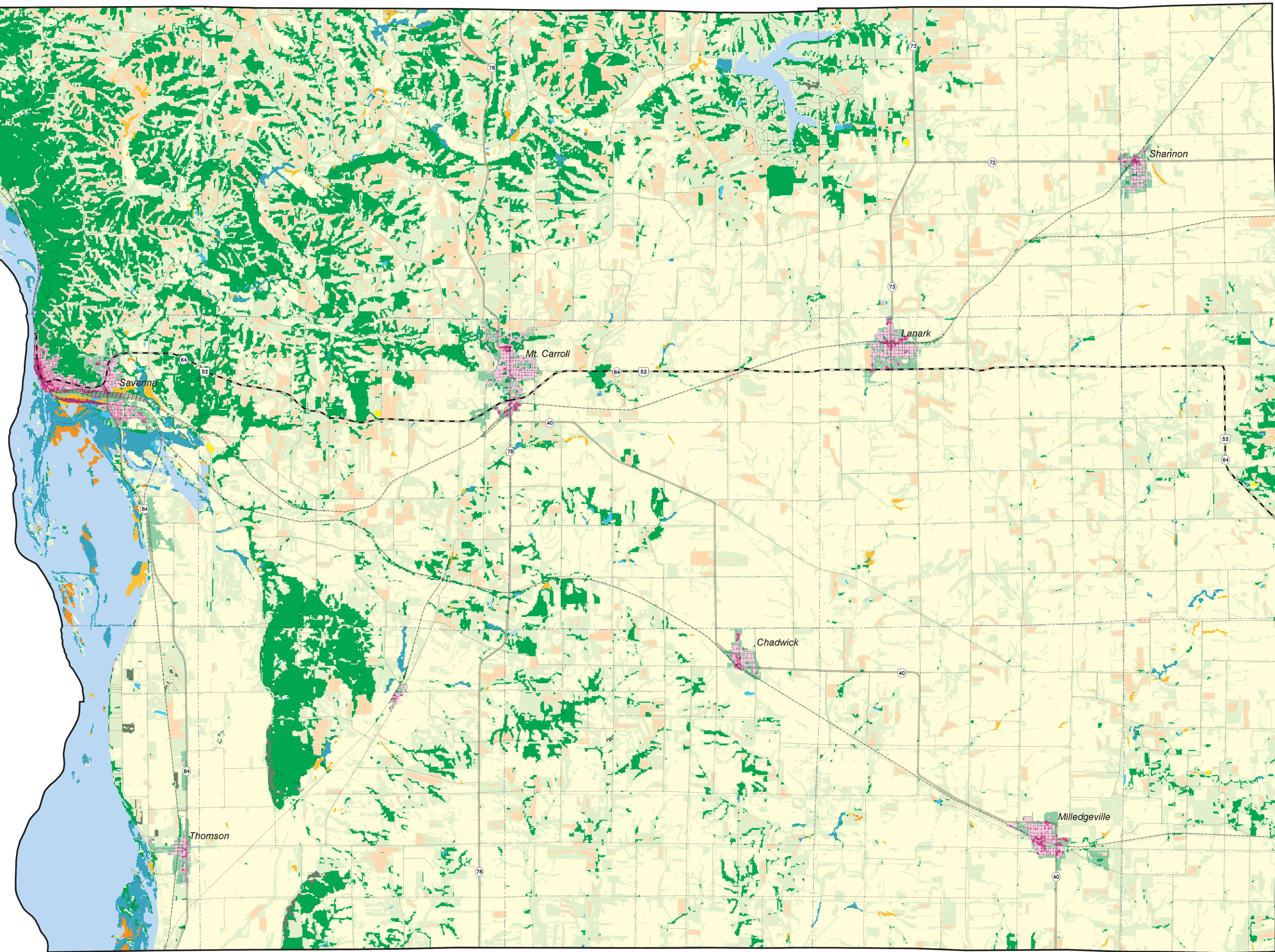
The CTAP Land Cover Database of Illinois was produced by:

- Donald Luman, Illinois State Geological Survey, Champaign, IL
- Mark Joselyn, Illinois Natural History Survey, Champaign, IL
- Liane Suloway, Illinois Natural History Survey, Champaign, IL

with assistance from:

- Jill Blanchar, Waste Management and Resource Center, Champaign, IL
- Yoram Bresler, Department of Electrical and Computer Engineering, University of Illinois, Champaign, IL
- Tom D'Avello, Natural Resources Conservation Service, Champaign, IL
- Li Hunt, Center for Scholarly Technology, University of Southern California, Los Angeles, CA
- Ian Kerfoot, Department of Electrical and Computer Engineering, University of Illinois, Champaign, IL
- Tom Kompare, Illinois Natural History Survey, Champaign, IL
- Bob Leicherman, Office of Research and Environmental Planning, IDNR, Springfield, IL
- Daniel Wendt, North Central Forest Experiment Station, USFS, St. Paul, MN

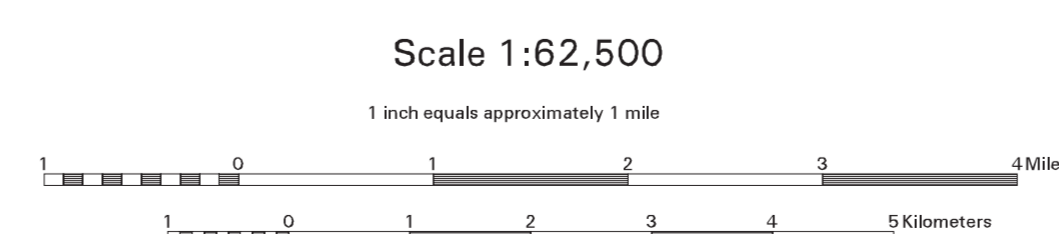
REFERENCE:
Luman, D., Joselyn, M. and Suloway, L. (1996) Illinois Land Cover. Illinois Department of Natural Resources/Illinois Scientific Surveys Joint Report 3, Springfield, Illinois.



T25N

T24N

T23N



Lambert Conformal Conic Projection



This map was prepared by the Illinois State Geological Survey, in cooperation with the Illinois Department of Commerce and Community Affairs and the Carroll County Board. It is part of a suite of maps created to assist county officials in addressing geologic questions concerning capable sites for landfill development. Maps produced for this study are intended for regional land use planning purposes. More detailed mapping is needed for site specific considerations. This map has been reviewed for scientific accuracy and has been edited to meet the quality standards of maps in the ISGS Map Series.